



## 2025 SUMMIT

September 15-17, 2025  
New Orleans

# Leveraging Our Collective Resources: Houston/Harris County Think Tank Strategies for Sustainability

Marlene McNeese, MBA

Deputy Assistant Director

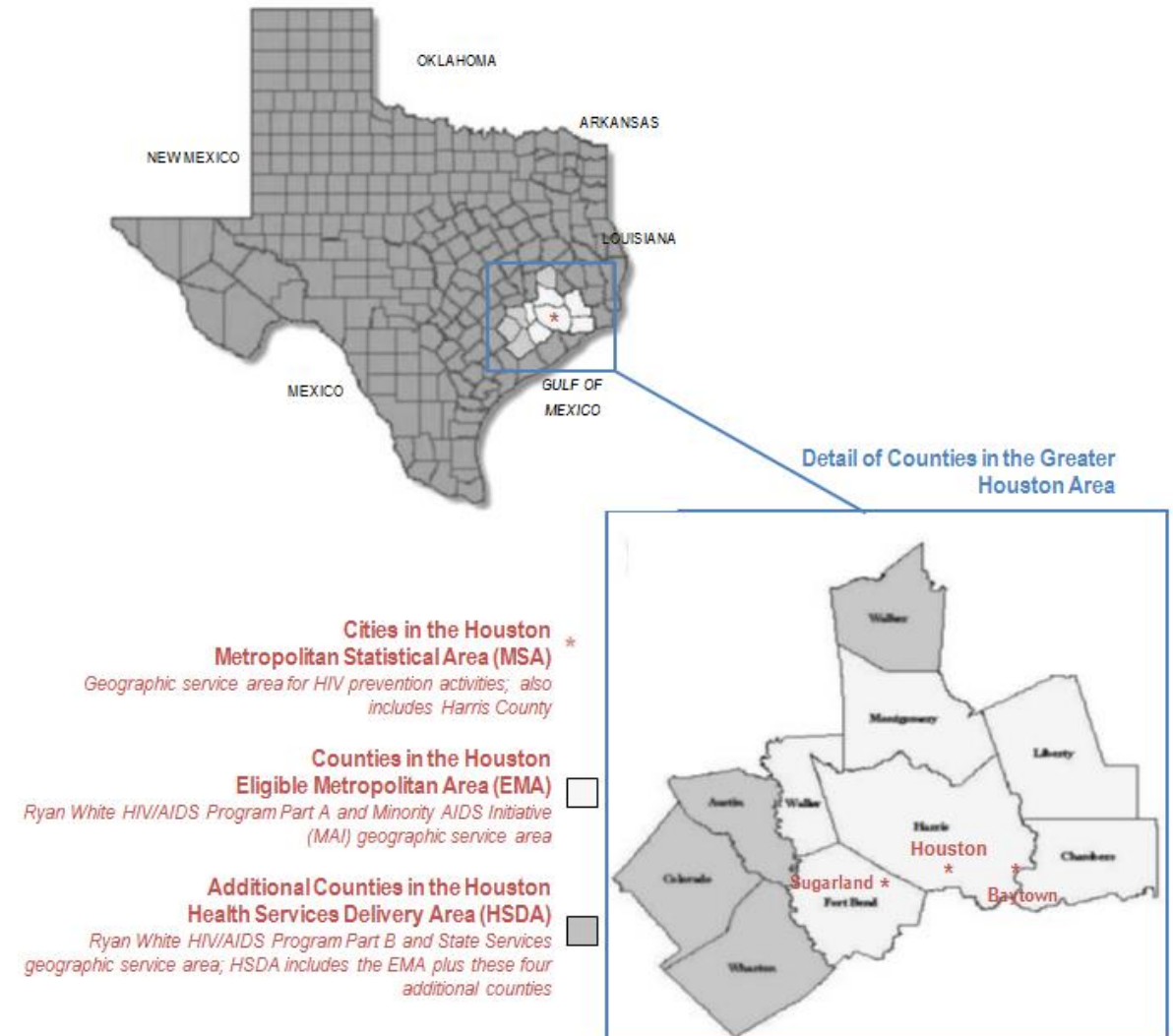
Houston Health Department



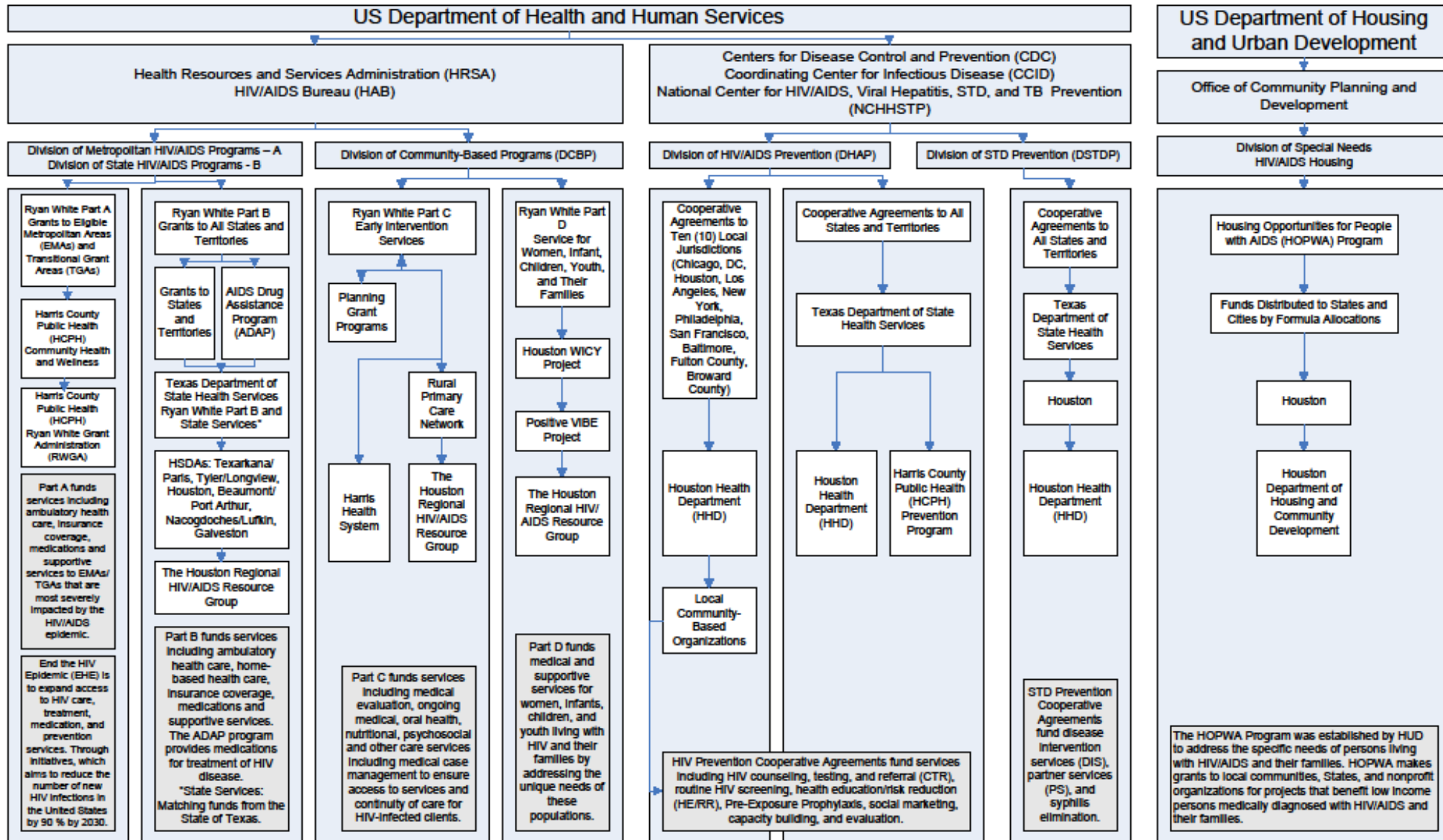
# Overview: Houston Area

- Together, the Houston MSA, EMA, and HSDA cover **10,062 square miles**, or 3.5% of the entire state, and are home to **more than 7.8 million residents**, the vast majority of whom (74%) reside in Houston/Harris County (U.S. Census Bureau, 2025).
- The MSA= 10 counties
- **Harris County= 1,777 sq. miles, over 4.7 million residents**
  - 3<sup>rd</sup> most populous county in the US
  - Almost 69% of the total population are racial/ethnic minorities
  - 42% Hispanic, 20% black or African American, 26% foreign born

Greater Houston Area Geographic Service Designations for HIV Prevention and Care

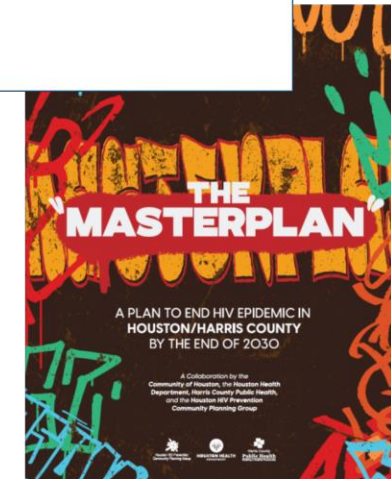
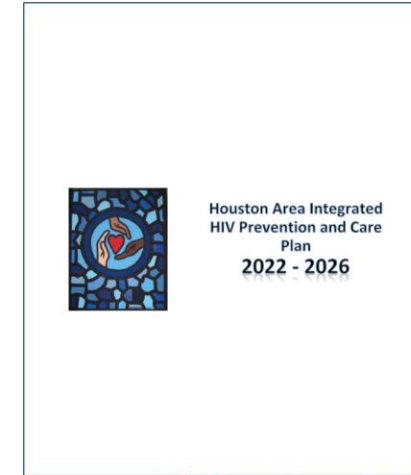


# Federal Funding for Houston/Harris County



# Long History of Integrated Planning

- Joint planning began in 2011 with the first plan released in 2012
- 6 years prior to requirement by HRSA and CDC
- Third joint plan released in 2022-2026



# Strategic Planning: Think Tank Series



Convened April–  
2025 with 15–20  
participants per  
session



Included  
subrecipients,  
community leaders,  
and policy experts



Bi-weekly  
sessions



Policy Updates



Sustainability  
strategies



Cross-sector  
collaboration





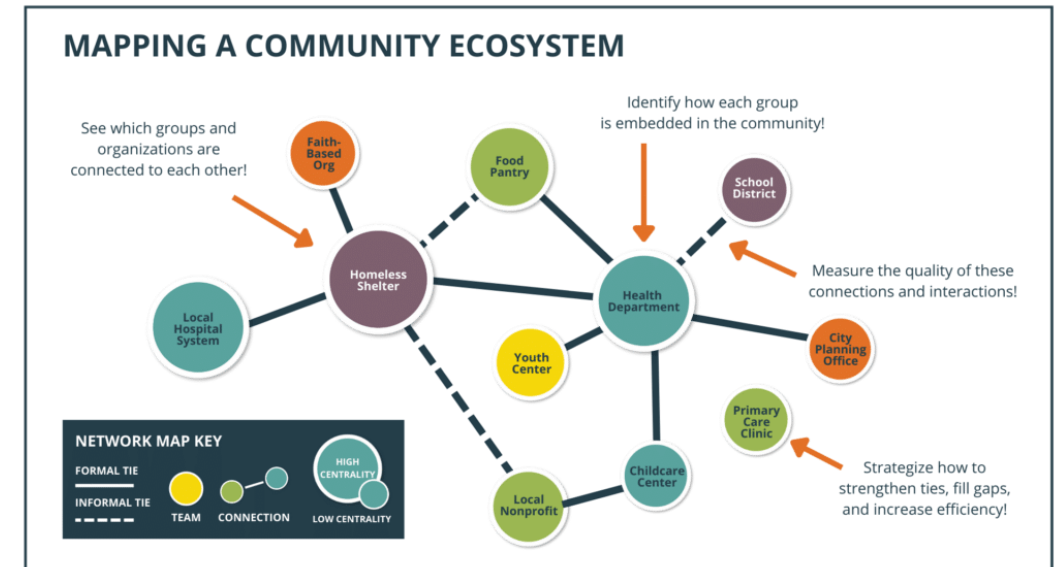
# Think Tank Strategic Planning: Key Themes & Activities

- Think Tank convenings held with consistent engagement
- 'Friends in High Places' Policy Meeting (May 2025)  
hosted by LOUD Inc. Held at County Commissioner's office
- Raised awareness of public health funding issues
- Phase 1 of Asset Mapping Project completed
- Policy updates and consensus achieved on one-pager impact statement



# Think Tank Strategic Planning: Asset Mapping

- **Purpose:** Identify and catalog existing resources within a community, organization, or system.
- **Focus:** Highlights strengths, capabilities, and opportunities rather than deficits or needs.
- **Assets Include:** People, physical resources, institutions, partnerships, and services.
- **Benefits:** Encourages collaboration, strengthens partnerships, and promotes efficient use of existing resources.
- **Survey Domains:** Organizational Readiness, Mission Alignment & Leadership Commitment, Funding Capabilities, Community Knowledge & Memory, Partnerships, Advocacy, and Workforce Capacity



# Think Tank Strategic Planning: Ongoing Work

- Asset Mapping Phase 2 – expanding to other sector collaborators, mental health, substance use, other regional healthcare orgs
- Follow-up meetings with elected officials – Mobilization for next Texas Legislative Session in 2027
- Narrative training program in development with Center for AIDS Research (CFAR) leaders
- Communication platform under review (Slack, GroupMe, Signal)
- Rapid Response Plan in draft phase







***Thank You!***



**Jason Black, Project Coordinator- Ending  
HIV Epidemic  
Harris County Public Health  
Email: [Jason.black@phs.hctx.net](mailto:Jason.black@phs.hctx.net)  
Contact: (832)973-7702**

**Marlene McNeese, Deputy Assistant Director  
Houston Health Department  
Email: [marlene.mcneese@houstontx.gov](mailto:marlene.mcneese@houstontx.gov)  
Contact: (832)393-4735**

