



**2025 SUMMIT**

September 15-17, 2025  
New Orleans

# Leveraging HOPWA and Housing Resources to Strengthen Tampa's HIV Strategy

Anne Cronyn, MPA

City of Tampa, Florida

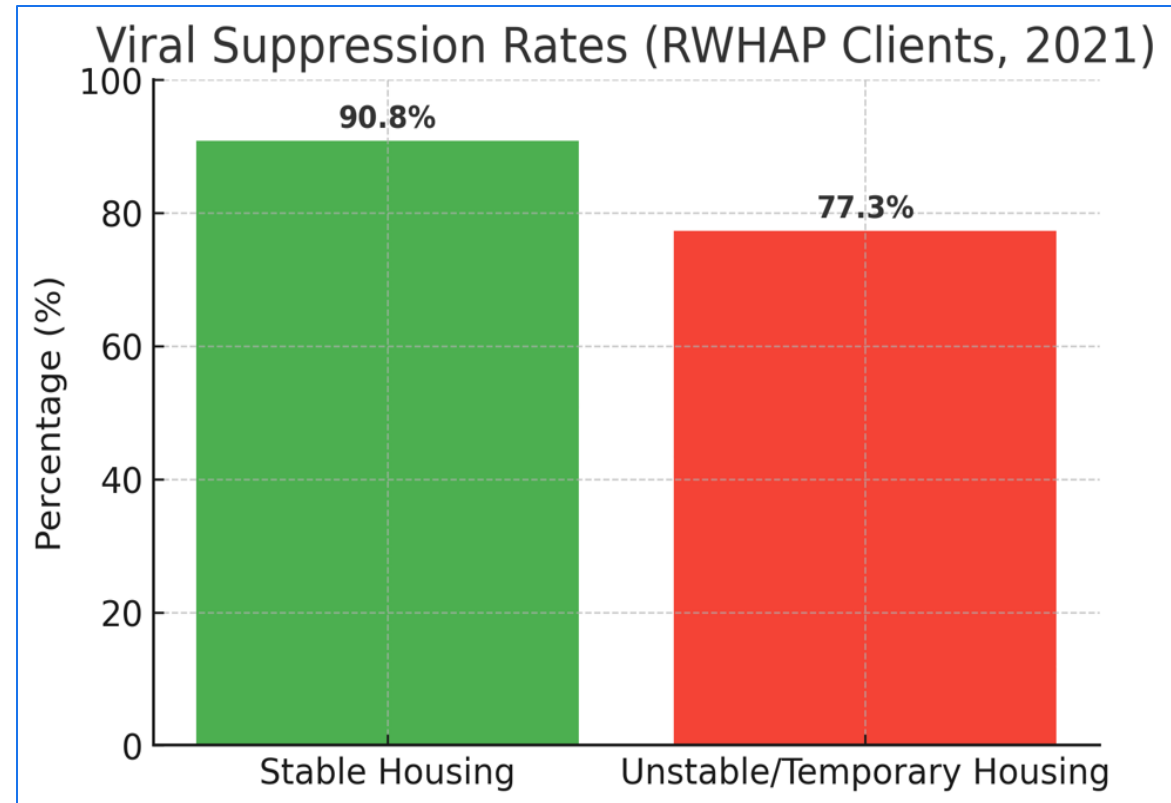


# HOUSING STATUS AND HIV OUTCOMES

## Housing = Key Social Determinant of Health

Homelessness and housing instability linked to:

- Higher viral loads
- Lower rates of viral suppression
- Greater vulnerability to HIV acquisition



# HOPWA

The U.S. Department of Housing and Urban Development's (HUD) Office of HIV/AIDS Housing manages the Housing Opportunities for Persons With AIDS (HOPWA) program.

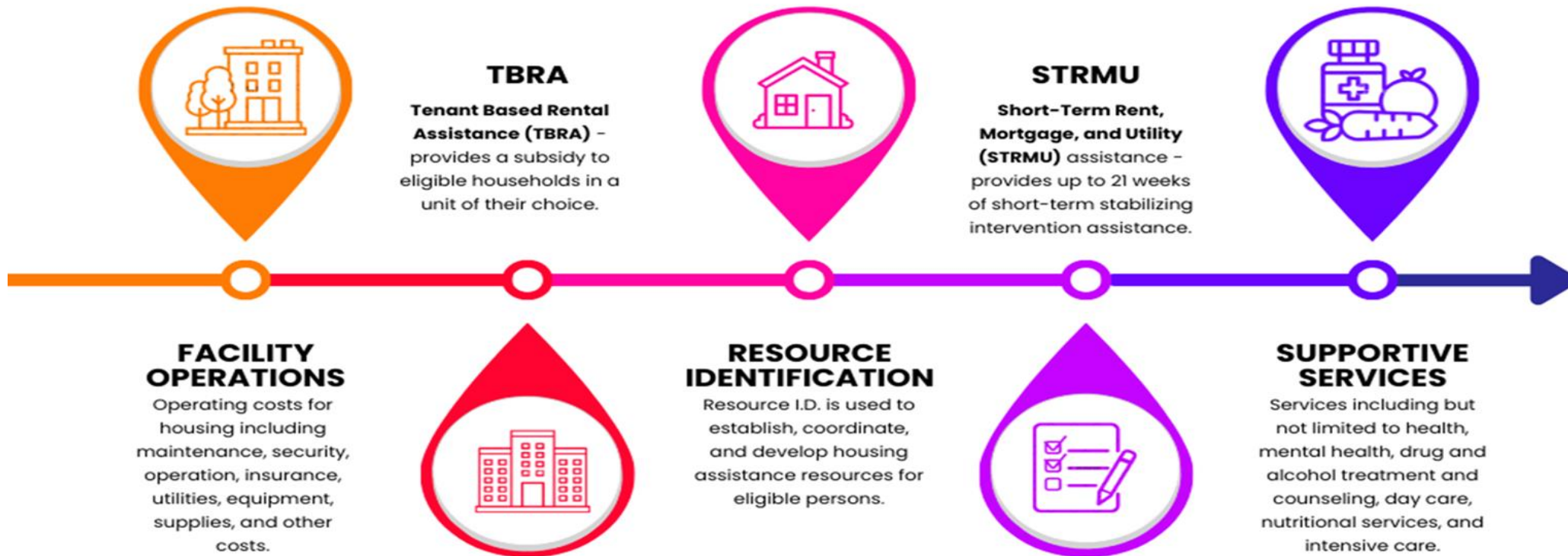
The HOPWA program is the only Federal program dedicated to addressing the housing needs of people with HIV.

Under the HOPWA program, HUD makes grants to local communities, states, and nonprofit organizations to provide housing assistance and supportive services for low-income people with HIV and their families.



# HOPWA ACTIVITIES

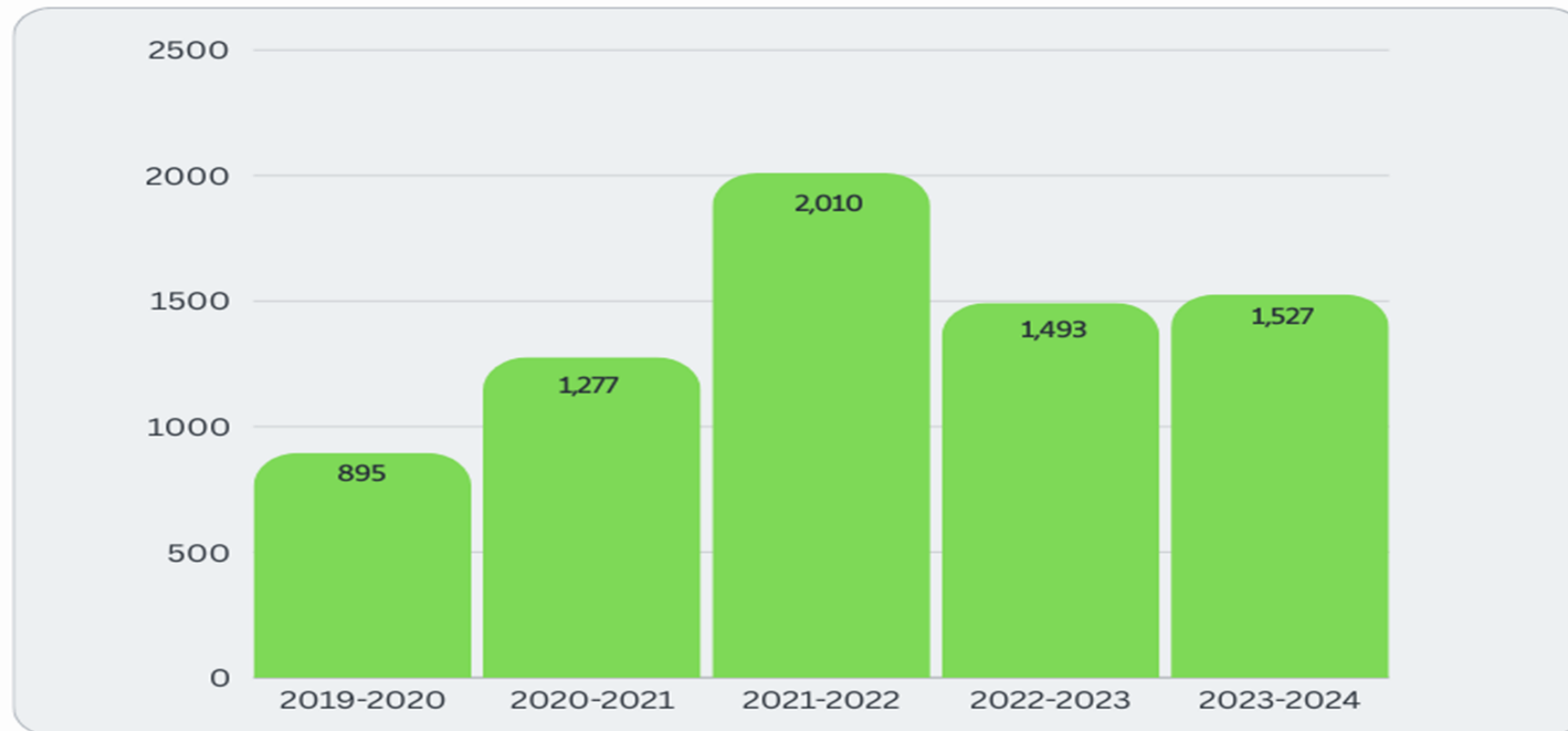
## CITY OF TAMPA HOUSING & COMMUNITY DEVELOPMENT



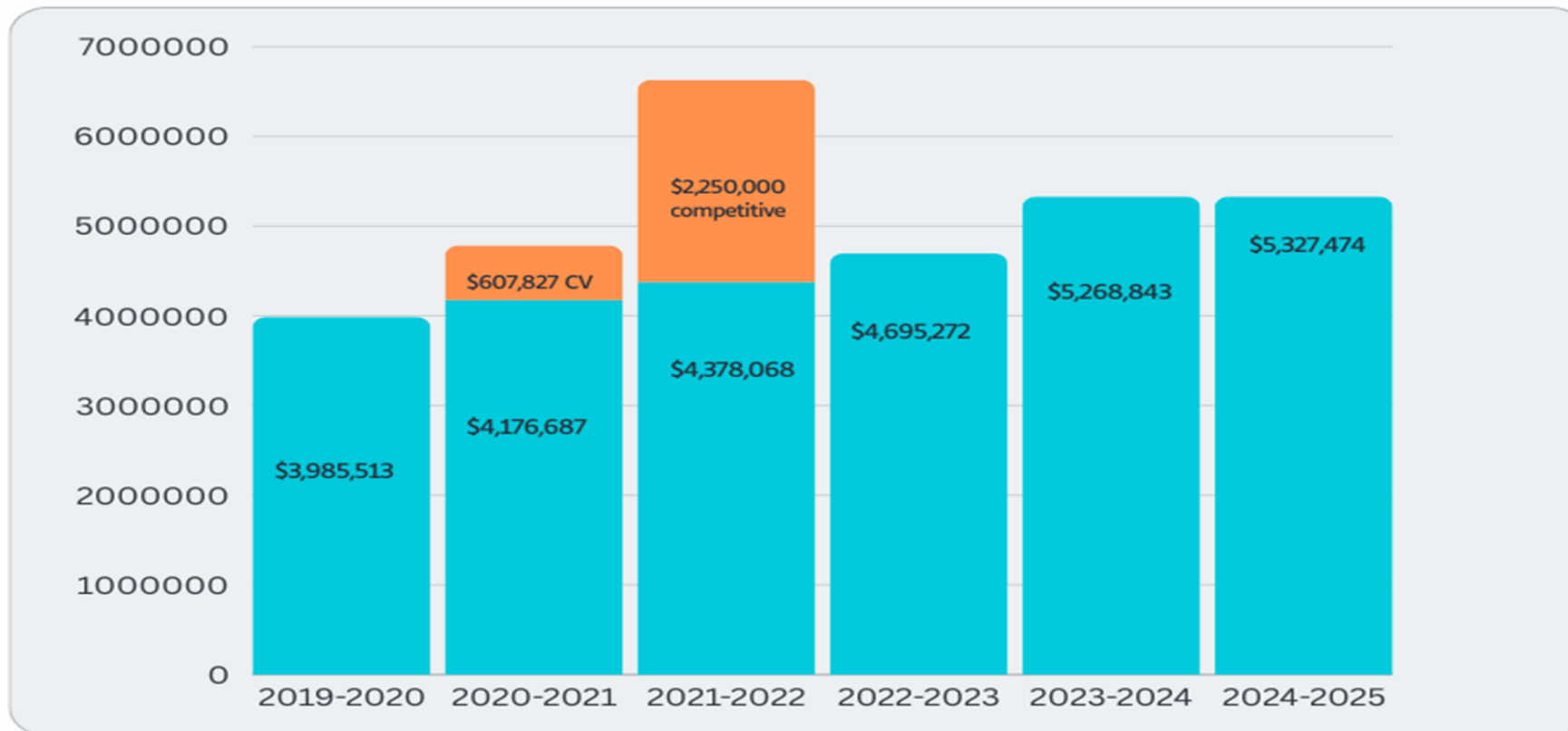
# HOPWA PROVIDERS

Hillsborough	Pinellas	Pasco	Hernando
<b>Catholic Charities</b> <ul style="list-style-type: none"><li>• TBRA</li><li>• Facility Operations</li></ul> <b>EPIC</b> <ul style="list-style-type: none"><li>• TBRA</li><li>• STRMU</li><li>• Supportive Services</li></ul> <b>Metro Inclusive Health</b> <ul style="list-style-type: none"><li>• STRMU</li><li>• Supportive Services</li></ul> <b>Tampa Housing Authority</b> <ul style="list-style-type: none"><li>• TBRA</li></ul>	<b>Boley Centers</b> <ul style="list-style-type: none"><li>• TBRA</li></ul> <b>EPIC</b> <ul style="list-style-type: none"><li>• TBRA</li><li>• Supportive Services</li></ul> <b>Metro Inclusive Health</b> <ul style="list-style-type: none"><li>• STRMU</li><li>• Supportive Services</li></ul>	<b>BayCare Behavioral Health</b> <ul style="list-style-type: none"><li>• Facility Operations</li></ul> <b>EPIC</b> <ul style="list-style-type: none"><li>• TBRA</li></ul>	<b>BayCare Behavioral Health</b> <ul style="list-style-type: none"><li>• Facility Operations</li></ul> <b>Catholic Charities</b> <ul style="list-style-type: none"><li>• TBRA</li></ul>

## City of Tampa HOPWA Persons Served



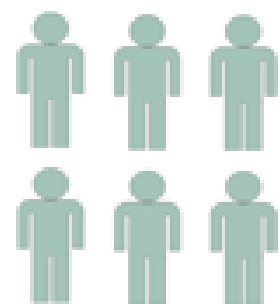
# City of Tampa HOPWA Funding





# HOPWA

October 1, 2023 - September 30, 2024



1381

Persons  
Served



\$5,032,233.34

Total Funds Expended

7

Agencies



Counties Served:

- Hillsborough
- Pasco
- Pinellas
- Hernando



384

Households  
Received Housing  
Assistance

97%

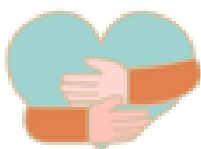
of HOPWA-Eligible Individuals  
Served with Rental Assistance  
Achieved Healthier Outcomes



Households Received Access to Care

382

Active with  
Medical Insurance



381

Connected to Primary  
Healthcare Provider

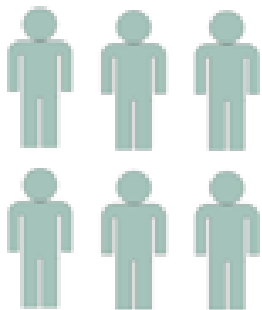






# HOPWA

October 1, 2024 - Current



994

Persons  
Served



\$4,116,189.24  
Total Funds Expended

6

Agencies



Counties Served:

- Hillsborough
- Pasco
- Pinellas
- Hernando



315

Households  
Received Housing  
Assistance

97%

of HOPWA-Eligible Individuals  
Served with Rental Assistance  
Achieved Healthier Outcomes



Households Received Access to Care

298

Active with  
Medical Insurance



296

Connected to Primary  
Healthcare Provider





# HOPWA Competitive

July 1, 2023 - June 30, 2024

  
**\$1,000,628.89**  
Total Funds Expended

  
**83**  
Persons Served

Subrecipient  
**EPIC**   
Serving Hillsborough County  



Households Served Per  
Housing Assistance


**53**  
Rental Assistance 

**38**  
Hotel Assistance 

**41**  
Move-in Assistance 

Household Health Outcomes

  
**53**  
Active with  
Medical Insurance

  
**53**  
Connected with  
Primary Care Doctor

**100%**  
of households  
received Intensive  
Case Management  






# HOPWA Competitive

July 1, 2024 - Current


  
**\$846,191.95**  
Total Funds Expended


  
**83**  
Persons Served

Subrecipient  
**EPIC**   
Serving Hillsborough County  



Households Served Per  
Housing Assistance


**54**   
Rental Assistance

**7**   
Hotel Assistance

**4**   
Move-in Assistance

Household Health Outcomes

  
**54**  
Active with  
Medical Insurance

  
**54**  
Connected with  
Primary Care Doctor

**100%**  
of households  
received Intensive  
Case Management  




# Leveraging Other Funds to Support PLWHA

**HOME TBRA** – Rental Assistance up to 24 months; \$600,000/year (\$1,100,000 for FY 2025-26)

Federal Funds, Awarded to AIDS Service Association of Pinellas DBA EPIC

**SHIP Rental Program** – Deposit, Rent, and Arrears Assistance; \$100,000/year (\$600,000 for FY 2025-26)

State of Florida Funds, Awarded by Metro Inclusive Health

**City of Tampa Rental and Move-in Assistance Program (RMAP)** – Deposit, Rent, and Arrears

City of Tampa General Funds, administered by the City of Tampa, approximately \$6,000,000/year



# Thank You!

**Anne Cronyn, MPA**

**Community Development Coordinator**

**City of Tampa Department of Housing and Community Development**

**[Anne.Cronyn@tampagov.net](mailto:Anne.Cronyn@tampagov.net)**

**813.274.7944**

**2555 E. Hanna Ave., Tampa Florida 33610**

