



Decentralizing HIV Care: Community-Led Implementation Models

Adapting Programming from Clinic to Community

Edda Rodriguez, PhD, MPH

University of Miami Miller School of Medicine

Continuum 2025 • June 10-12, 2025 • San Juan

Contact Info



This Session Will Detail...

#continuum2025



- 1) Establishing and maintaining successful community-academic partnerships
- 2) Pilot work
- 3) SAFE adaptation process
- 4) Progress to date and lessons learned

What We Know

#continuum2025



Effective prevention and care modalities are not adequately engaging priority communities.

Figure 1– New HIV Diagnoses by Race/Ethnicity in the US

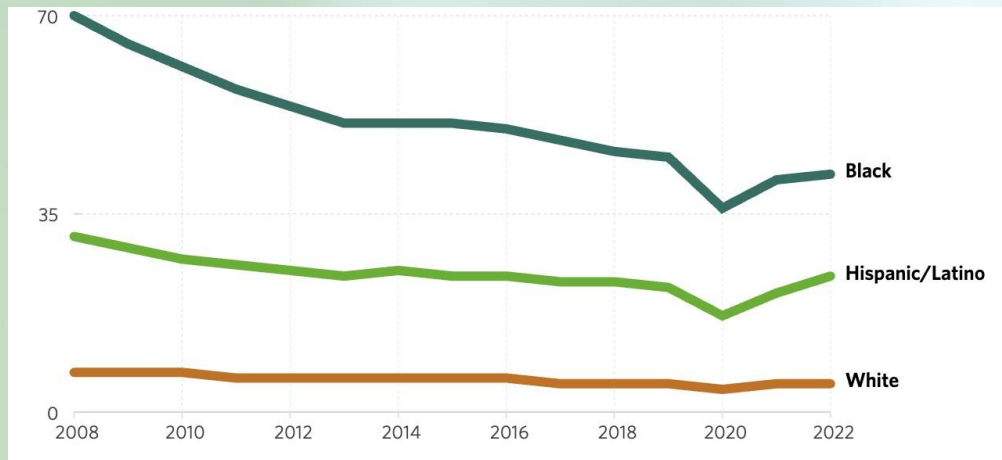


Figure 2- HIV Prevalence and New Diagnoses In Miami

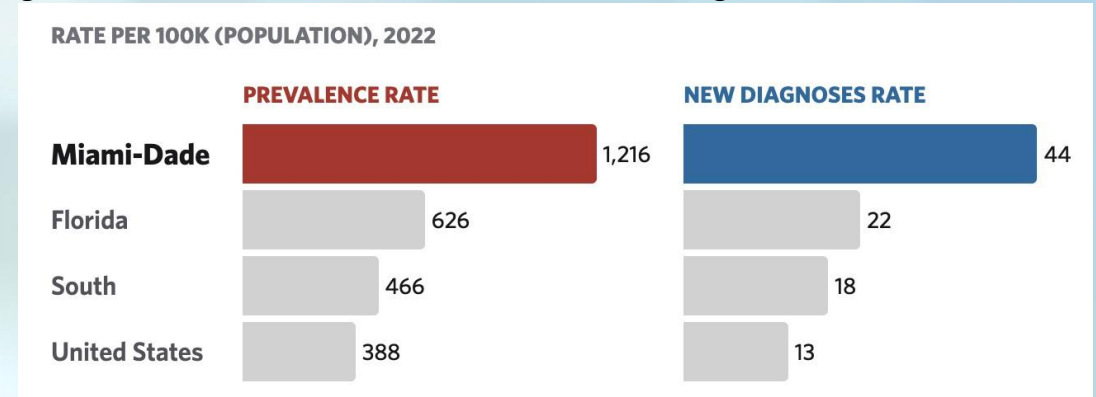


Figure 3 – Viral Suppression by Demographic Group in Miami

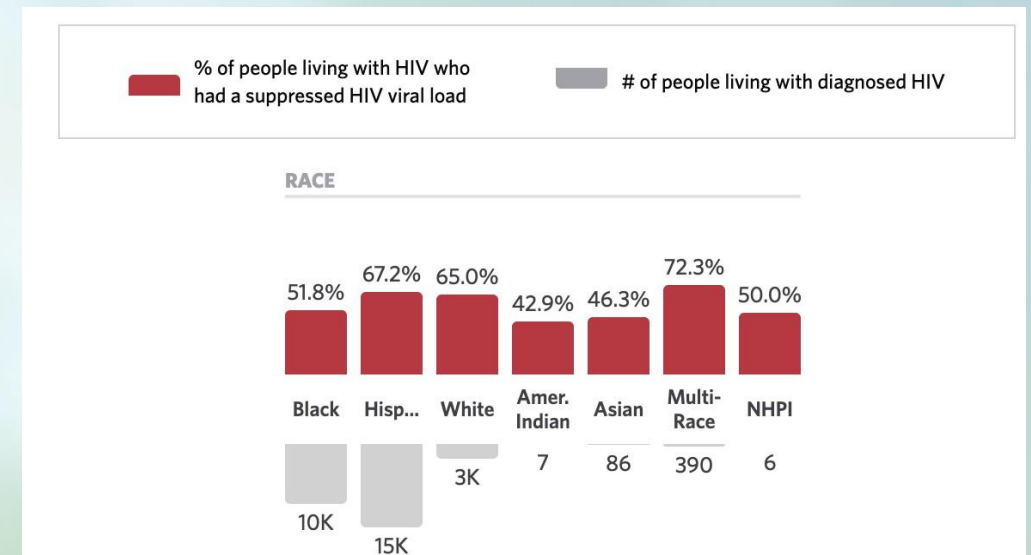


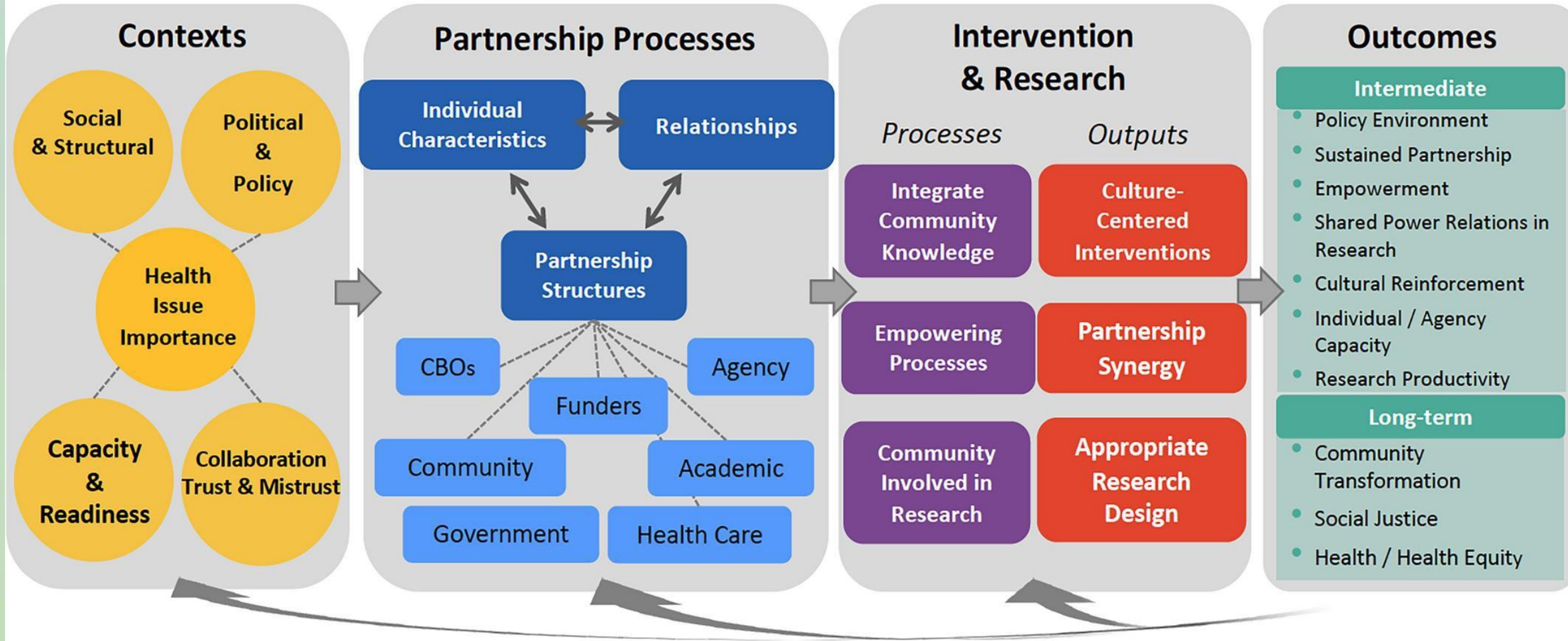
Fig1: <https://map.aidsvu.org/race-profile/nation/usa/overview#R2-New-Diagnoses>

Fig2: <https://map.aidsvu.org/profiles/county/miami-dade-county-fl-florida/overview>

Fig3: <https://map.aidsvu.org/profiles/county/miami-dade-county-fl-florida/continuum-of-care#2-4-Achieving-Viral-Suppression>

CBPR Conceptual Model

Adapted from Wallerstein et al, 2008 & Wallerstein et al, 2018



Community Partnerships

#continuum2025



- Partnership established in 2019
- Provides clinical HIV prevention and care services at 4 South Florida locations
- Developed & currently implements the SAFE program

- Partnership established in 2024
- Provides:
 - Support groups
 - Transportation support
 - Referral to low-cost clinics & trusted providers
 - Peer-delivered HIV education

Community Partnerships

#continuum2025



TRUST!

1. Community priorities are centered
2. Shared mission
3. Not just a research partnership

Community Priorities & Needs

#continuum2025



Pilot project to protocolize the PPN social support services

- 1) Standardize the services provided by each navigator.
- 2) Disseminate the replicable process through a publication.

****Community members are co-authors on this**

- 3) Future projects testing the efficacy, effectiveness, and subsequent scaling of the PPN social support services.

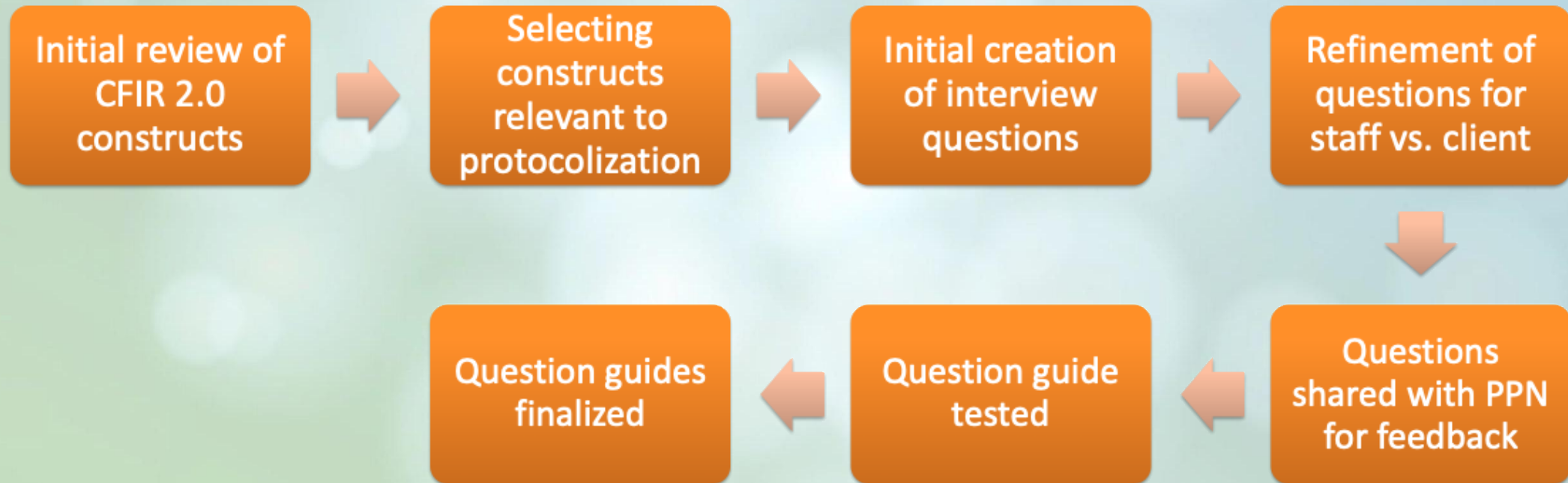


Based on Damschroder et al. (2022). Image adapted by The Center for Implementation, © 2022 | V2024.01 | For full citation: <https://thecenterforimplementation.com/toolbox/cfir>

Consolidated Framework for Implementation Research (CFIR) 2.0

Pilot Methods – Question Guide Development

#continuum2025



Pilot Methods – Interviews

#continuum2025



- Completed 12 key informant interviews (KII)
- Interviews were Zoom based and lasted 60 to 90 minutes
- Interviews were conducted by two trained interviewers
- One member of the interviewing team led the discussion while the other completed the coding template.

Pilot Methods – Analysis

#continuum2025



IN-CALL CODING



RAPID QUALITATIVE
ANALYSIS

Pilot Preliminary Results

#continuum2025



Pilot project assessing

- Community priorities: what should a future program look like?
- Existing resources and strengths: what does staff already know?
- Current service gaps?



Importance of lived
experience & peer
delivery



Existing skills in
peer-to-peer
engagement,
testing, and
counseling



Importance of
social support
and tangible
resources

Next Steps



PILOT PROJECT → PROGRAM ADAPTATION & IMPLEMENTATION

Decentralizing HIV Care: Community-Led Implementation Models

Adapting Programming from Clinic to Community

SAFE Program Components

#continuum2025



Current delivery approach



Client-tailored motivational interviewing (MI)



Peer support



Linkage to social support programs – as needed

Addition based on preliminary work



Resource kit for peer distribution (new component)

Decentralizing SAFE

#continuum2025



ADAPT-ITT a multiphase adaptation process

- Identifying the core components of SAFE
- Adapting the program for decentralized implementation (SAFE → SAFE-Community)
- Test the SAFE-Community program
- Evaluate key implementation factors

Tracking Changes: Framework for Reporting Adaptations and Modifications to Evidence-based Implementation Strategies (FRAME-IS)

Project Aims



Aim 1: Adapt the SAFE program to allow for a decentralized, peer to peer delivery of the program.

- Aim 1a. Identification of the core components of SAFE
- Aim 1b. Engaging community members and topical experts to iteratively develop and refine SAFE-Community.

Aim 2: Assess the SAFE-Community program (e.g., feasibility and accessibility) and identifying implementation factors (e.g., sustainment and adoption).

- Aim 2a. Pilot testing SAFE -Community.
- Aim 2b. Identifying implementation factors

ADAPT-ITT

#continuum2025



Stage	Defined As	Our Approach	Aim
Assessment	Who is the new target population and why?	<ul style="list-style-type: none"> - Ongoing community engagement - Pilot project to identify existing needs, resources, and priorities 	Pilot Work
Decision	What EBI is being selected for adaptation or adoption?	<ul style="list-style-type: none"> - SAFE selection - Interviews with current navigators, future deliverers, and potential users 	Pilot Work & 1a
Adaptation	Document the adaptations made and why.	<ul style="list-style-type: none"> - FRAME-IS 	1b
Production	Producing the adaptation	<ul style="list-style-type: none"> - Partner-engaged co-design 	1b
Topical Experts	Who can help guide the adaptation?	<ul style="list-style-type: none"> - Brainwriting premortem approach 	1b
Integration	What is going to be included in the adapted program?	<ul style="list-style-type: none"> - Resource kit & warm hand-off - Other refinements TBD 	Pilot Work & 1b
Training	Who will be trained on the new program?	<ul style="list-style-type: none"> - Staff at PPN 	2a
Testing	Was the adaptation successful and pilot testing	<ul style="list-style-type: none"> - Pilot test with 30 adults who are over the age of 18 and live in Miami 	2a & 2b

Aim 1a. Identification of the core components of SAFE

#continuum2025



ADAPT-ITT Stage: Decision

Purpose

- Identify the core components of the SAFE program
- Determine what key adaptations are necessary

Data Sources

- Interviews with SAFE navigators: (N=12)
- SAFE SOP materials extraction (e.g., training, evaluation, and protocol)
- Feedback provided by PPN staff/clients during the pilot project

Aim 1b. Engaging community members and topical experts to iteratively develop and refine SAFE-Community.

#continuum2025



ADAPT-ITT Stages: Adaptation, Production, Topical Experts

Purpose

- Co-design and refine SAFE-Community.

Data Sources

- PPN staff
- LS staff
- Potential SAFE-Community Users

Approach:

- Brainwriting premortem
- Adaptation Tracking: Framework for Reporting Adaptations and Modifications to Evidence-based Implementation Strategies

Aim 2a. Pilot testing SAFE -Community.

#continuum2025



ADAPT-ITT Stages: Training & Testing

Purpose

- Proof of concept testing of SAFE-Community

Data Sources

- PPN clients (N=30)

Approach: Multimethod

- Participants will be followed for 2-months, providing quantitative, qualitative, and social network data at baseline, 1-, and 2-months.

Aim 2b. Identifying implementation factors

#continuum2025



ADAPT-ITT Stage: Testing

Purpose

- Develop an implementation playbook
- Explore key barriers and facilitators to implementation

Data Sources

- Interviews with SAFE-Community users
- Interviews with SAFE-Community peer navigators

Thank you!



Acknowledgements: Thank you to the many mentors, community members, and staff that make my work possible.

Funding support: The presented projects and partnerships were supported by The University of Miami Center for AIDS Research, which is funded by the National Institutes of Health, including NIA, NIDCR, NINR, NHLBI, NICHD, NIDA, NIDDK, NIMHD, NCI, and the National Institute of Allergy and Infectious Diseases, P30AI073961, Subaward PI: Rodriguez. The University of Miami's Center for HIV and Research in Mental Health (CHARM) P30MH133399, Subaward PI: Rodriguez, which is funded by the National Institute Of Mental Health & National Institute of Allergy and Infectious Diseases. The content is solely the responsibility of the authors and does not necessarily represent the official views of the funding agencies or of the National Institutes of Health.

References

#continuum2025



- 1) <https://map.aidsvu.org/profiles/county/miami-dade-county-fl-florida/overview>
- 2) <https://map.aidsvu.org/race-profile/nation/usa/overview#R2-New-Diagnoses>
- 3) <https://map.aidsvu.org/profiles/county/miami-dade-county-fl-florida/continuum-of-care#2-4-Achieving-Viral-Suppression>
- 4) Sullivan PS, Woodyatt C, Koski C, Pembleton E, McGuinness P, Taussig J, Ricca A, Luisi N, Mokotoff E, Benbow N, Castel AD. A data visualization and dissemination resource to support HIV prevention and care at the local level: analysis and uses of the AIDSvU Public Data Resource. *Journal of medical Internet research*. 2020;22(10):e23173.”
- 5) CFIR image: <https://thecenterforimplementation.com/toolbox/cfir>
- 6) AB.H. Qualitative Methods in Rapid Turn-Around Health Services Research. PowerPoint Presentation. 2012 VA HSRD Cyberseminar Spotlight Womens Health.
- 7) Wingood, Gina M ScD, MPH*†; DiClemente, Ralph J PhD*†‡. The ADAPT-ITT Model: A Novel Method of Adapting Evidence-Based HIV Interventions. *JAIDS Journal of Acquired Immune Deficiency Syndromes* 47():p S40-S46, March 1, 2008. | DOI: 10.1097/QAI.0b013e3181605df1
- 8) Gilmartin, H., Lawrence, E., Leonard, C., McCreight, M., Kelley, L., Lippmann, B., Coy, A., & Burke, R. E. (2019). Brainwriting Premortem: A Novel Focus Group Method to Engage Stakeholders and Identify Preimplementation Barriers. *Journal of nursing care quality*, 34(2), 94–100. <https://doi.org/10.1097/NCQ.0000000000000360>
- 9) Rabin, B.A., Cain, K.L., Ayers, L.O. et al. Adaptation of the brainwriting premortem technique to inform the co-creation of COVID-19 testing strategies in underserved communities in South San Diego. *BMC Health Serv Res* 24, 12 (2024). <https://doi.org/10.1186/s12913-023-10341-w>
- 10) Miller, C., Barnett, M.L., Baumann, A.A. et al. The FRAME-IS: a framework for documenting modifications to implementation strategies in healthcare. *Implementation Sci* 16, 36 (2021). <https://doi.org/10.1186/s13012-021-01105-3>

Contact

Edda Rodriguez, PhD, MPH

University of Miami Miller School of Medicine

E.rodriquez6@miami.edu

Contact Info

