



Pregnant, Young and at High(er) Risk of HIV infection: Suboptimal Pre-exposure Prophylaxis Continuation in Pregnant Adolescent Girls and Young Women in Primary level Facilities in Zambia.

Musonda Musonda, United States Agency for International Development

Continuum 2024 • June 9-11, 2024 • Puerto Rico

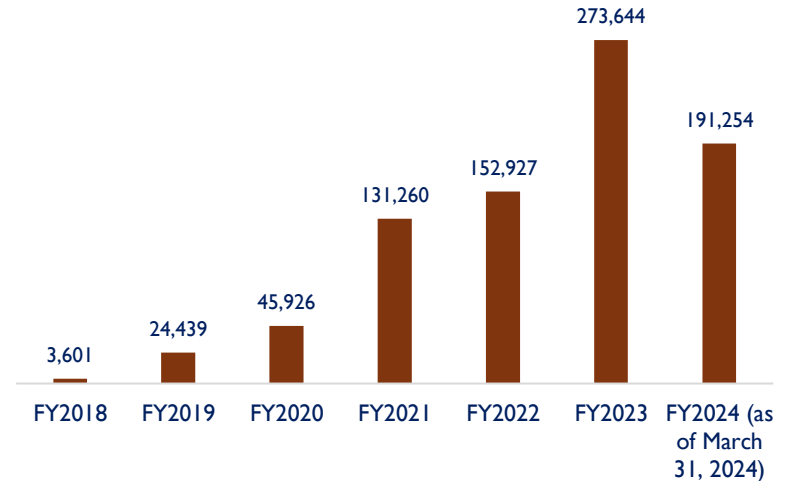


Background

Significant expansion of PrEP provision in Zambia

- Oral PrEP introduced in Zambia in 2017, through four pilot sites in Lusaka and Southern Provinces
- The PrEP program has since expanded significantly, growing from four sites in 2017 to 1,810 sites in 2024
- More than 750,000 clients initiated on PrEP since 2017
- Introduction of injectable PrEP in February 2024 to address continuation challenges among adolescents and young people and key populations

Individuals initiated on PrEP: 2017 - March 31st, 2024

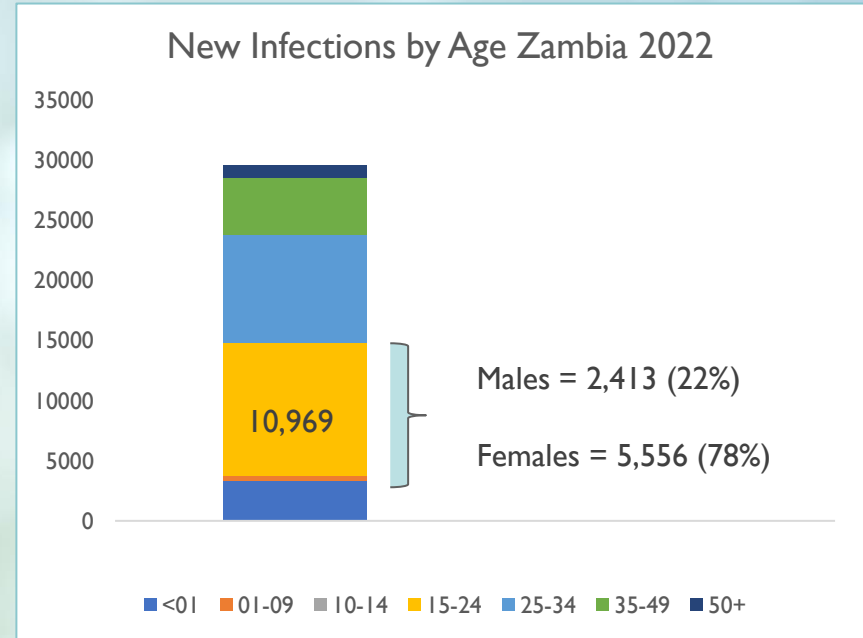




Background cont.

...However, challenges persist, including:

- Poor continuation, with more than 50% of clients not returning at one-month
- Persisting high infections among adolescents and young people, especially adolescents and young women (AGYW)
- Suboptimal coverage of PrEP among pregnant and breastfeeding women
- Pregnant AGYW face double-edged sword, experiencing a time of increased vulnerability while navigating an overburdened health system that is at times not adolescent-friendly

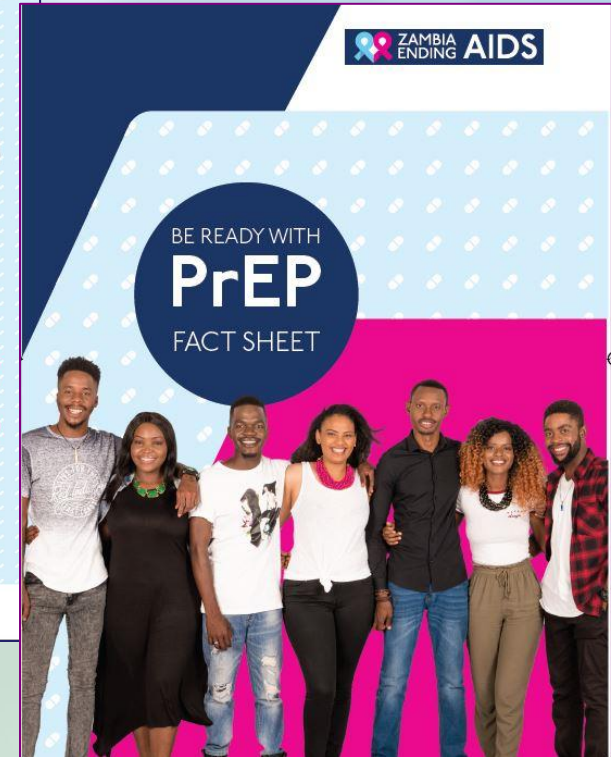


Intervention

USAID District Coverage of Health Services Project

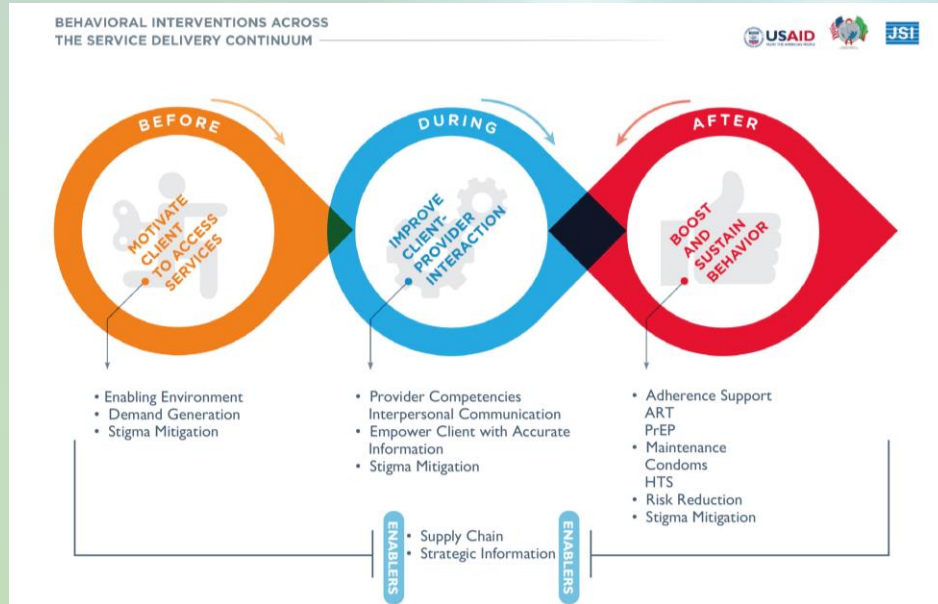
- Funded by the United States Agency for International Development (USAID) and implemented by JSI
- Designed to expand the reach of the health system to underserved areas and populations, through a direct service delivery and outreach model, at the lowest level of the health system (health post) to provide an integrated package of primary health services.
- Undertook a human-centered design study in 2019 to identify facilitators and barriers to PrEP uptake and developed a national PrEP demand generation campaign
- Project has initiated more than 150,000 clients on PrEP since 2017, including adolescent girls and young women (AGYW), pregnant and breastfeeding women (PBFW), men who have sex with men, female sex workers and incarcerated males
- PrEP provision includes facility-based and community-based services, with differentiated service delivery targeting hard-to-reach populations

#CONTINUUM2024





Leveraging peer models to increase PrEP uptake and improve continuation among at-risk AGYW



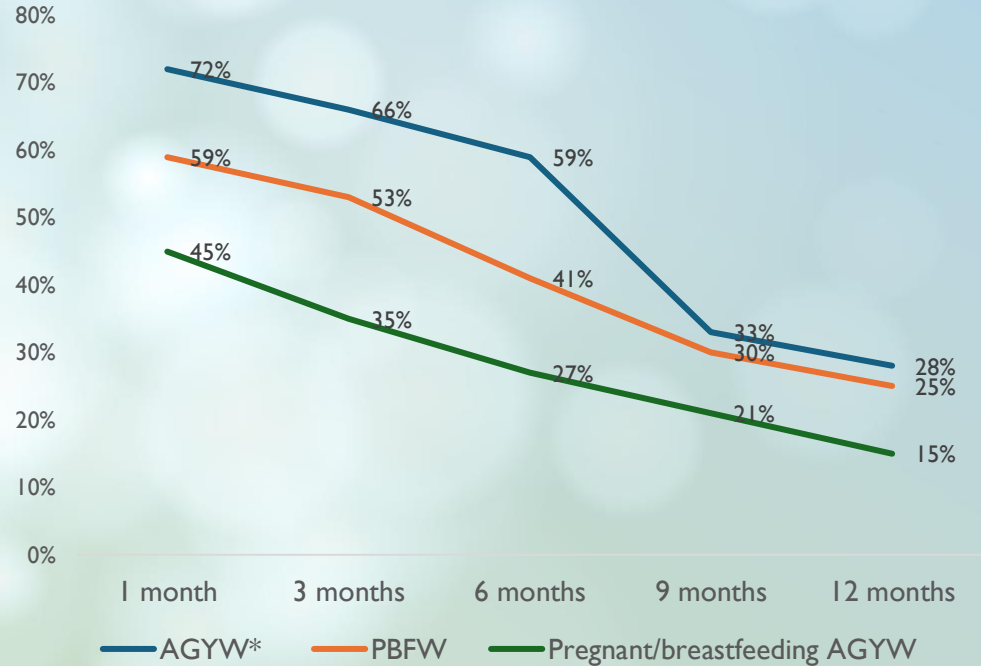
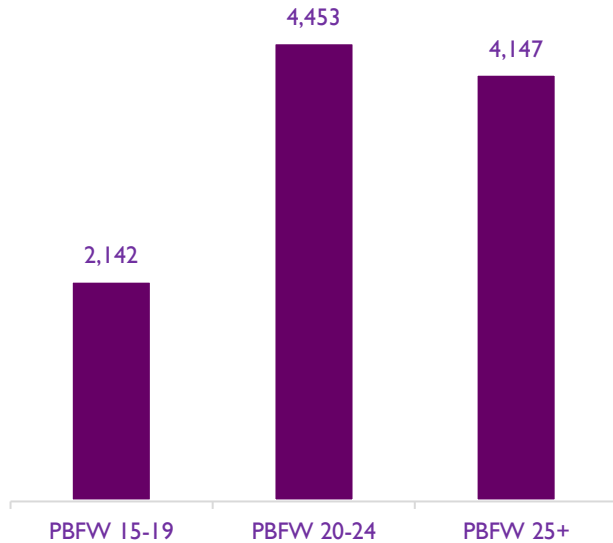
- Peers are identified, trained, and mobilized to provide adherence support to their fellow peers that may be eligible for PrEP.
- **Prevention and Behavioral Interventions Model**, focusing on what is required before, during and after when seeking to improve uptake of services:
 - **Before:** motivate clients to access services
 - **During:** improve client/provider interactions
 - **After:** boost and sustain behavior

Lower rates of continuation on PrEP among AGYW who are pregnant and breastfeeding

#CONTINUUM2024



Pregnant and breastfeeding women initiated on PrEP at DISCOVER-Health sites





Recommendations

- >50% of PBFW accessing antenatal care services are adolescent girls and young women
– Train HCWs on AGYW-friendly service provision that is non-judgmental
- Strengthen peer-led interventions for consistent messaging, empathy and encouragement to help adolescent PBFW to fully comprehend the benefits, both for themselves and their infants
- Provision of comprehensive HIV information to PBFW
- Build community understanding and acceptance of PrEP to make it easier for PBFW to access PrEP





Thank you!

For more information, please contact Musonda Musonda (mmusonda@usaid.gov)

Continuum 2024 • June 9-11, 2024 • Puerto Rico