



Putting people first: Optimizing primary health services for integrated, person-centered care in Jakarta, Indonesia

Dwi Oktavia Tatri Lestari Handayani, MD, M.Epid
*Head of Disease Prevention and Control
Jakarta Provincial Health Office*

AMSTEADAM

FAST-TRACK CITIES 2023

September 25-27, 2023 | RAI Amsterdam Convention Center

× City of
× Amsterdam

× GGD
× Amsterdam

IAFAC
INTERNATIONAL ASSOCIATION
OF PROVIDERS OF AIDS CARE

FAST-TRACK CITIES
INSTITUTE



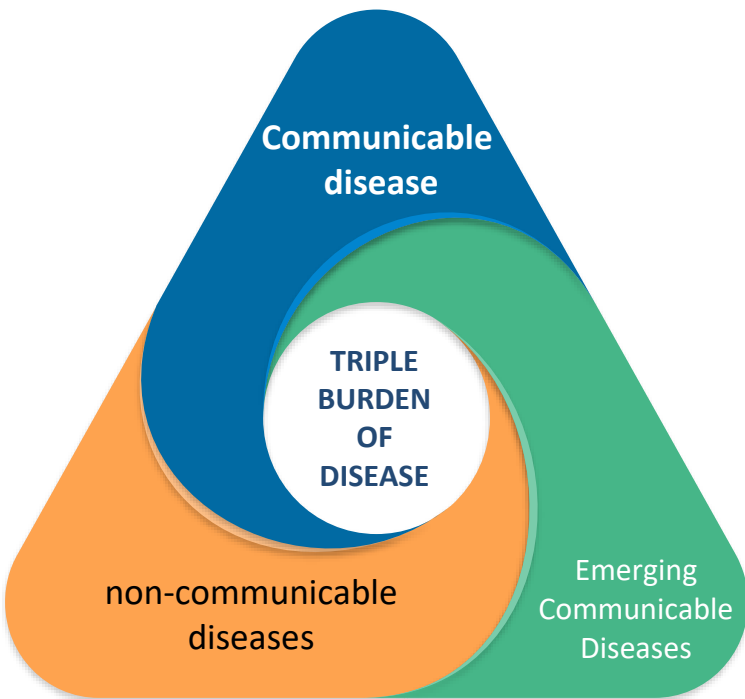
Jakarta

Jakarta has an area of about 664.01 km², has a population of 11,204,714 (2022) and is part of the Greater Jakarta metropolitan area (Jakarta-Bogor-Depok-Tangerang-Bekasi) with a population of around 28 million people.



DISEASE BURDEN AND HEALTH SYSTEM IN JAKARTA

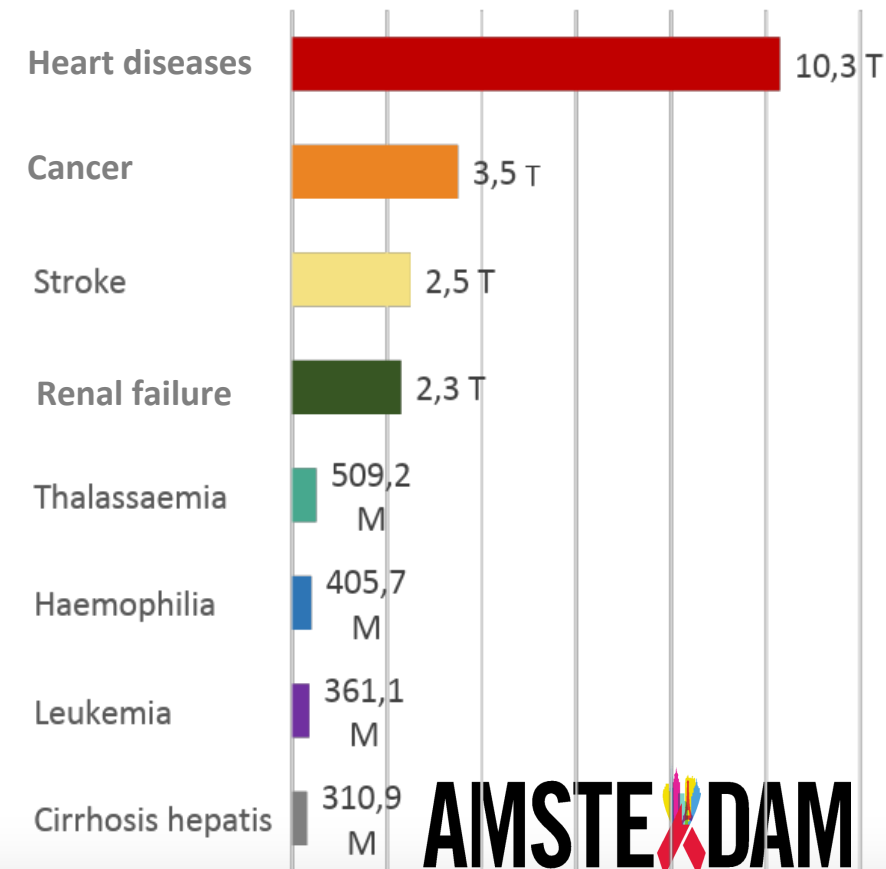
DISEASE BURDEN AND OTHER HEALTH



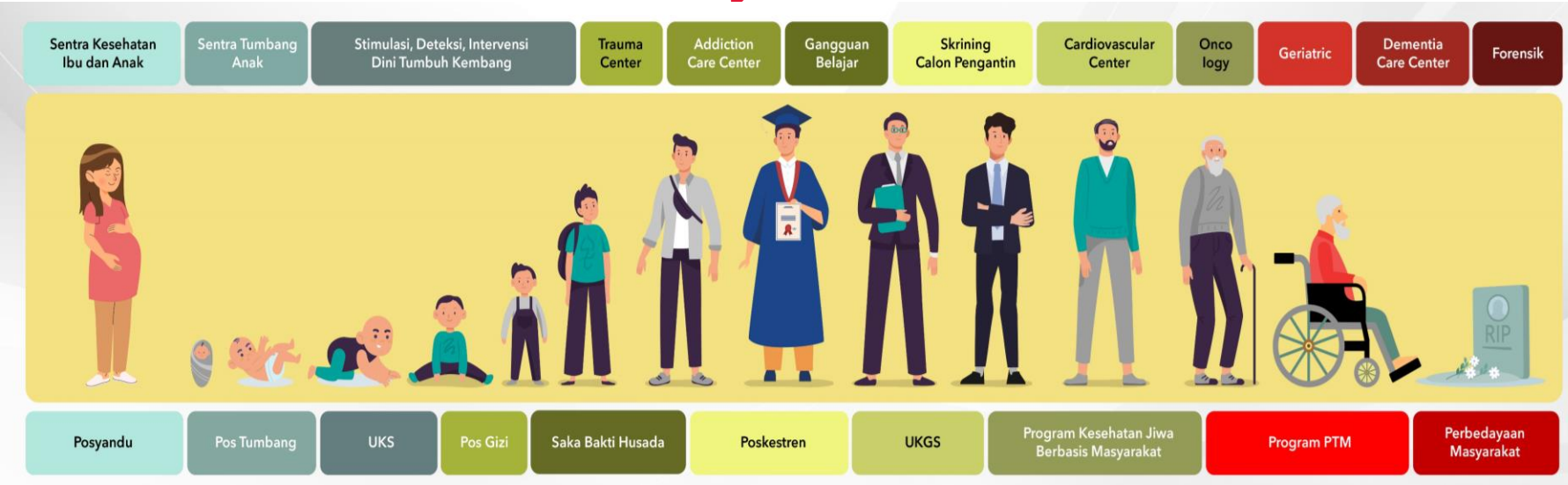
HEALTH FACILITIES IN JAKARTA

98% Jakarta residence covered by National Health Insurance	
Jakarta Provincial Governments'	Central Gov fac
32 General Hospital 44 District PHC 290 Sub-district PHC 20 Clinic	10 General Hospital 1 Clinic 14 Lab
Private and state-owned enterprise health facilities	Army/Police health facilities
141 Hospital 1695 Clinic 97 Lab	11 Hospital 55 Clinic 7 Lab

HEALTH EXPENDITURE BASED ON NATIONAL HEALTH INSURANCE



The Role of Primary Health Services



Primary Health Centers (*puskesmas*) provides primary public health and individual health measures through prioritizing health promotion and preventative activities in its catchment area.

Public health measures consist of activities to preserve and enhance health, as well as prevent and manage health issues, with focus on families, groups and populations

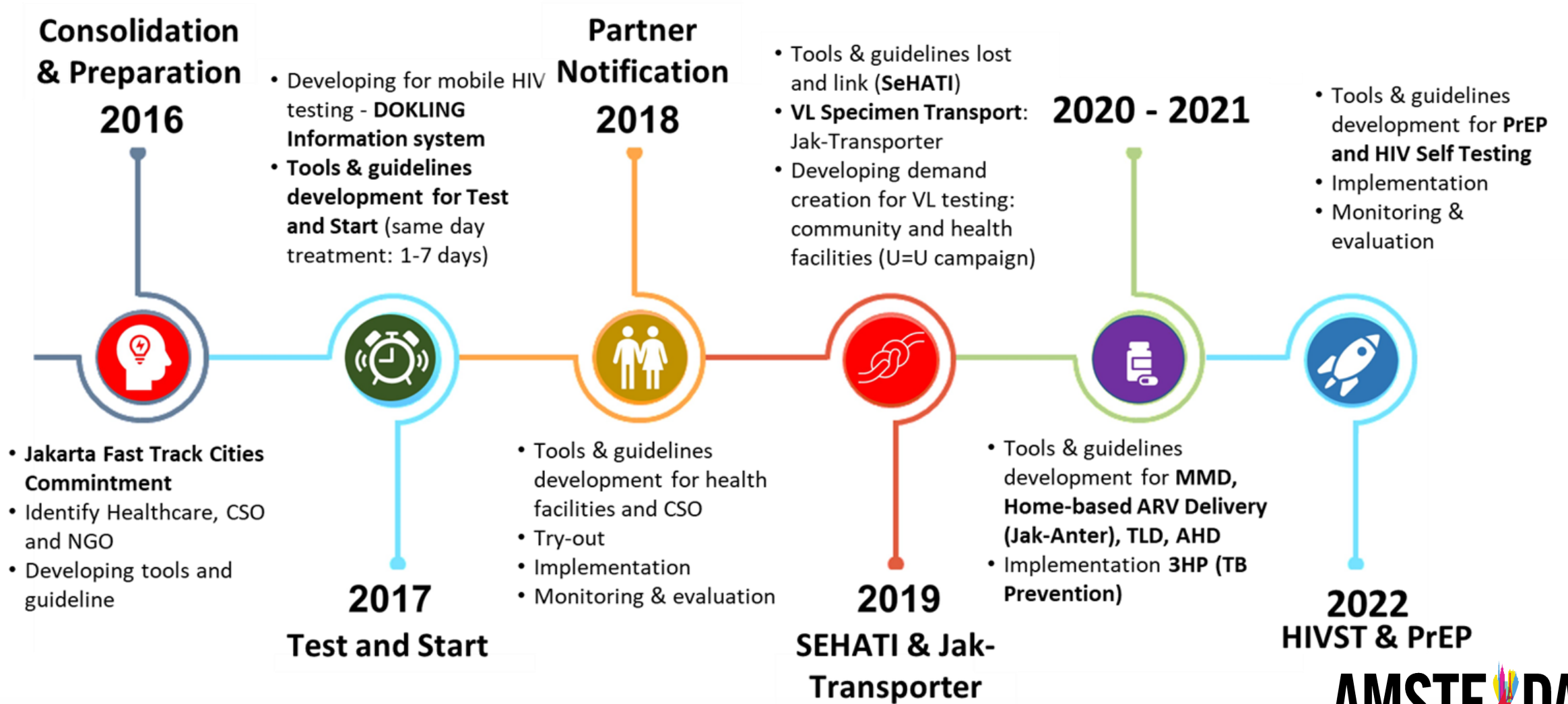
Background

1/3 PLHIV

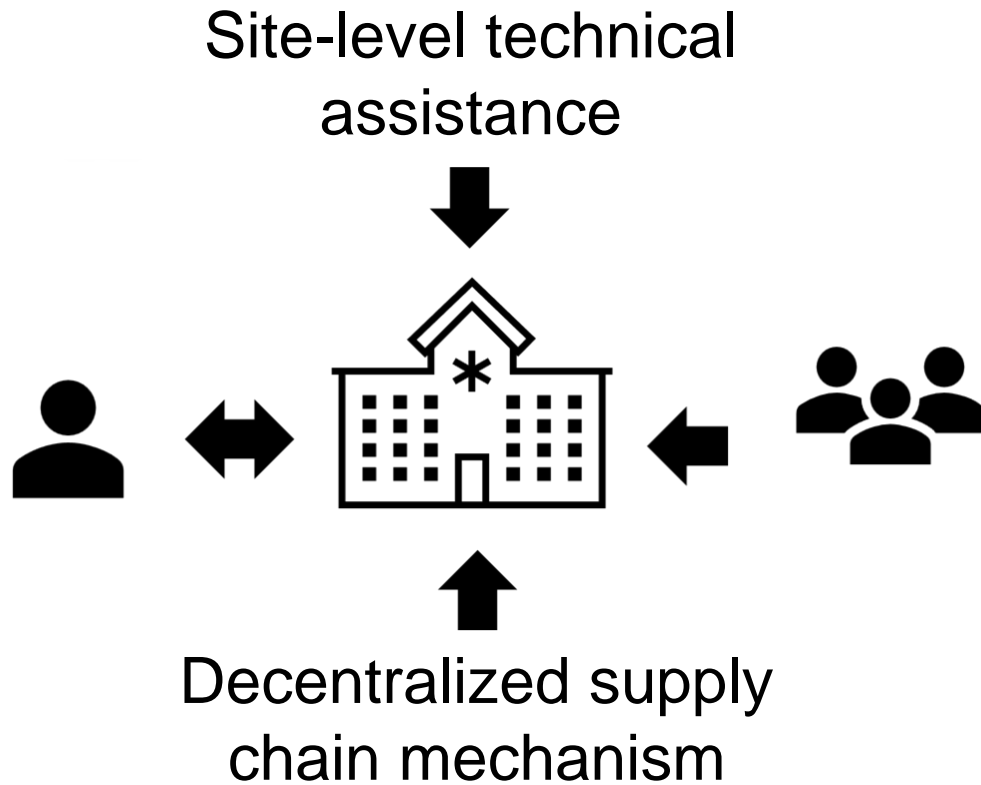
in Jakarta rely on *puskesmas* for HIV care.

Imperative for **integrated, patient-centered care.**

Jakarta HIV Program Roadmap



Approach to Technical Assistance



Jakarta PHO employs a collaborative quality improvement through **community-facility partnerships** at 44 Primary health Centre (*puskesmas*) to facilitate services access, uptake, and retention.

Tailored technical assistance

- Policy
- Capacity
- Logistics
- Recording and Reporting
- Resources





HIV Services in Jakarta

Health Facility	2018	2019	2022
Test HIV	135	182	202
CST	117	122	149
Viral Load Testing	30	30	36
Early Infant Diagnosis (EID) Test	1	1	1

Conseling and Testing services (202)

- 143 Hospital
- 44 Primary Health Care(s)
- 15 other (Clinics, Prison, etc)

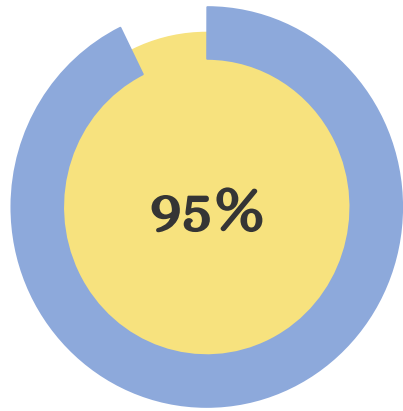
Care Support Treatment services (149)

- 90 Hospital
- 44 Primary Health Care(s)
- 15 (Clinic, Prison, etc)

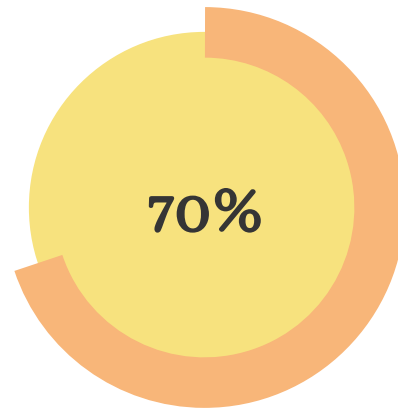
Viral Load testing labs (36)

- 6 PCR Abbott
- 30 Gene Xpert

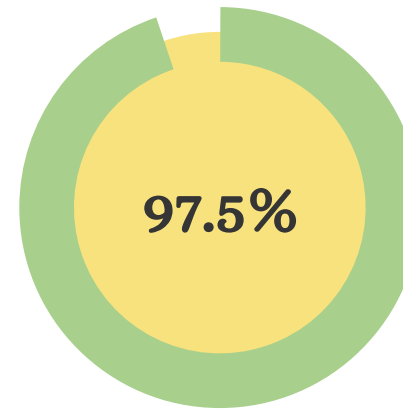
Achievements



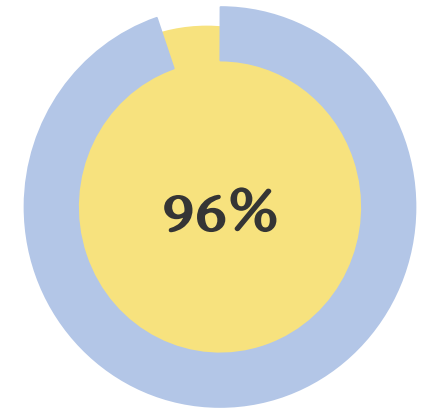
**Newly diagnosed
PLHIV enrolled in
service**



Same-day ART



**Newly initiated
with TLD**



**Achieved viral
load
suppression**

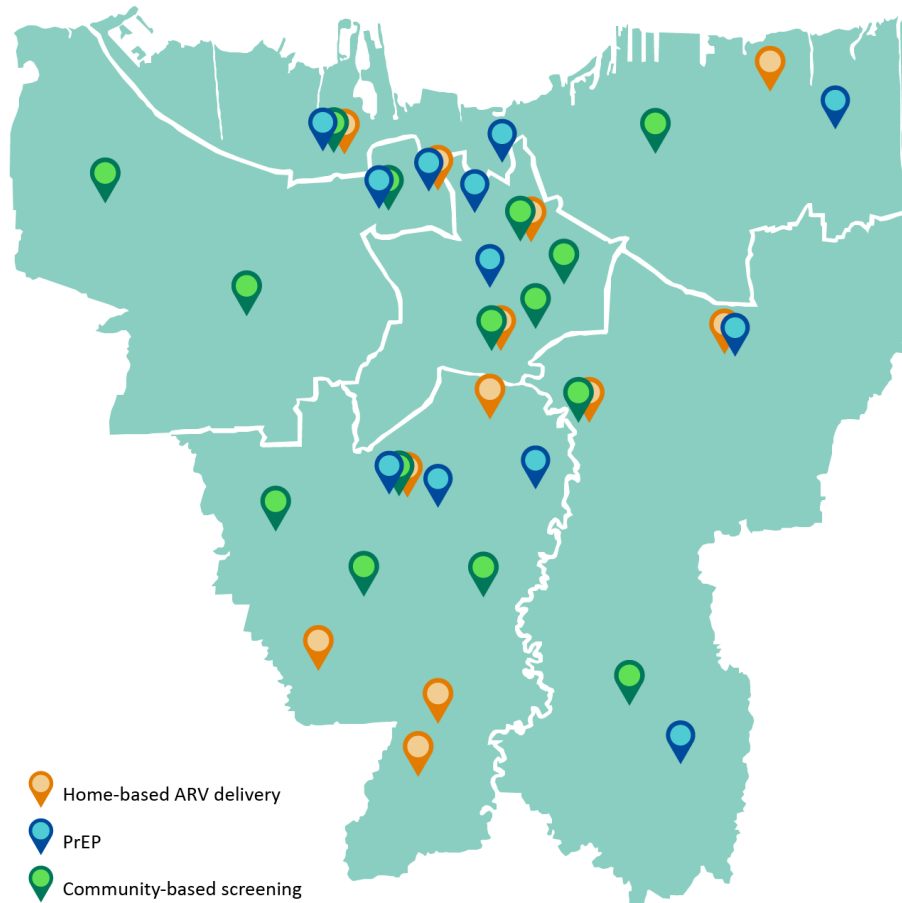
New initiatives: Integrated, person-centered primary healthcare services

11

Private-public partnership for home-based ARV services

12

PrEP services



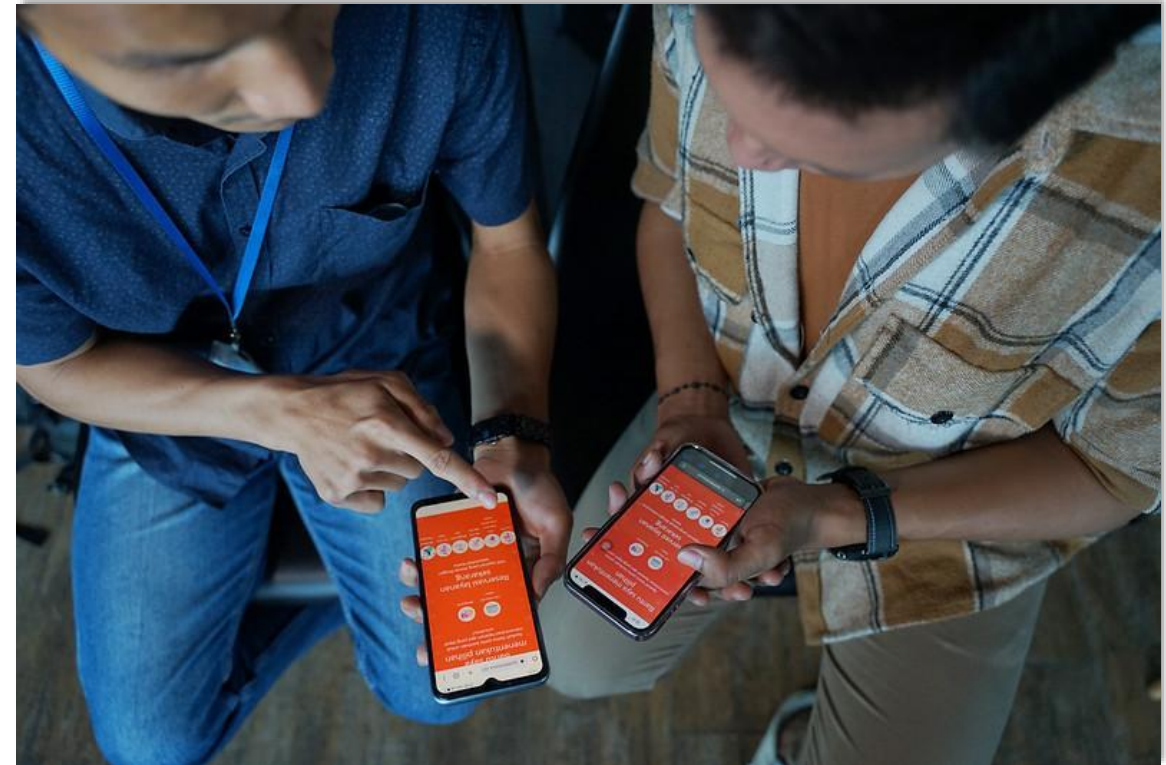
15

Facility distribution of community-based HIV screening kits

Lessons Learned

Optimized performance at Puskesmas will allow for future focus on upscaling and additional **service differentiation & integration:**

- ✓ multi-month dispensing and other integrated service packages that address the specific needs of PLHIV
- ✓ advance HIV disease case management
- ✓ access to comprehensive prevention services including PrEP



Recommendation



Expansion of more **integrated, person-centered primary health care services** for better overall health outcomes and well-being of PLHIV in Jakarta and beyond.

Thank you