



Membro da Coligação  
Internacional Sida 

# Community-Based Organization's Role in Reengaging Out-of-Care People Living with HIV in Portugal

WILLIAN GOMES

Migration and Health Coordinator, GAT, Portugal

26/09/2023



# WHO we are

## Established in 2001

GAT is a patient-led NGO that advocates for the rights and interests of people living with or affected by HIV and related co-infections in Portugal

## Main spheres of activity

Advocacy of equitable access to healthcare

Provision of preventive, diagnostic and holistic healthcare

Evidence generation and policy change

International cooperation in Portuguese-speaking countries

## Key figures

1,200,000 condoms distributed/year

65,000 HIV, HBV, HCV, syphilis tests performed/year

60,000 harm reduction kits distributed/year

31,000 screening sessions/year

14,000 medical and nursing visits/year

10,000 social services visits/year

## WHERE we are

6 community centers, 2 mobile units

units

+ provider of tests and training to 20+ NGOs in 10 other cities



## HOW we work provision of preventive, diagnostic and holistic healthcare



### SCREENING

HIV, HBV, HCV, and syphilis rapid testing performed by trained community health workers (i.e., task sharing with peers) in community centers tailored to key populations (e.g., men who have sex with men, trans people, sex workers, migrant persons, people who use drugs, people experiencing homelessness)



### LINKAGE TO CARE

Access to the national health service, navigation, assistance in retention in care, promoting health literacy, and



### MEDICAL SERVICES

Bacterial STI prevention, screening and treatment, mental health services and support, community-led hepatitis post-diagnostic care, community-led biomedical HIV prevention



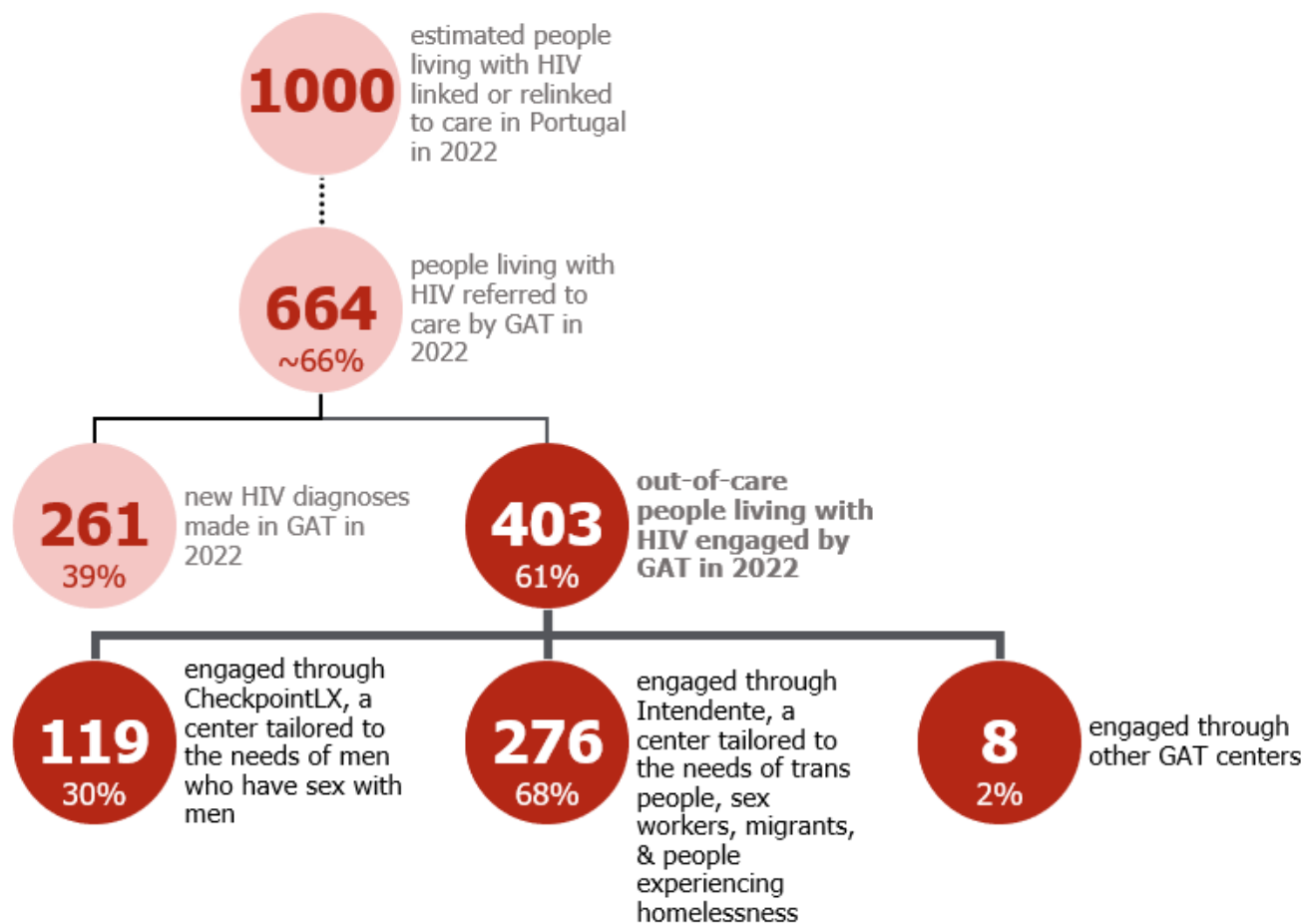
### SOCIAL INTERVENTION

Facilitate access to government healthcare and social services, financial preparedness preparation, risk and harm reduction








### COMBINATION PREVENTION

Distribution of materials for safer sexual practices and drug use and biomedical prevention.

# WHAT are our results regarding reengaging out-of-care individuals



## Keys for success

-  Service tailoring to key populations
-  Informal and low threshold environment
-  Integration of peers across services & management
-  Skilled social workers to overcome bureaucracy
-  Language familiarity for majority Brazilian population
-  Personalized navigation into the health system
-  Word of mouth in the community





# Thank you!

WILLIAN GOMES

[willian.gomes@gatportugal.org](mailto:willian.gomes@gatportugal.org)