

FTC231094

Evaluating the implementation of home-based sexual health care among men who have sex with men using the RE-AIM framework

Limburg4Zero

Cornelia JD (Hanneke) Goense



hanneke.goense@ggdzl.nl

c.goense@maastrichtuniversity.nl



DISCLOSURE OF INTERESTS

No (potential) conflict of interests	-
Relations that could be relevant for the meeting¹	Company names
<ul style="list-style-type: none">• Sponsorship or research funds²• Payment or other (financial) remuneration³• Shareholder⁴• Other relation, viz...⁵	-

KEY MESSAGE



“To effectively embed home-based sexual health care, a systematic implementation approach is crucial”

OBJECTIVE

- Universal human right
- Inequities in access¹
- ✓ Systematically developed and implemented home-based care offer!



¹Sighem van, A., et al (2022). *HIV Monitoring Report Human Immunodeficiency Virus (HIV) Infection in the Netherlands.*

SEXUAL HEALTH CARE IN NL



- Primarily through Public Health Service and GP
- Free for <25 years, MSM, sex workers

Limburg4Zero
home-based care by
Public Health Service

HOME-BASED SEXUAL HEALTH CARE ^{2, 3}

Self-sampling **STI/HIV** tests



Online **sexual health** counselling



Thanks for your order!
More info? Click one of the links below:

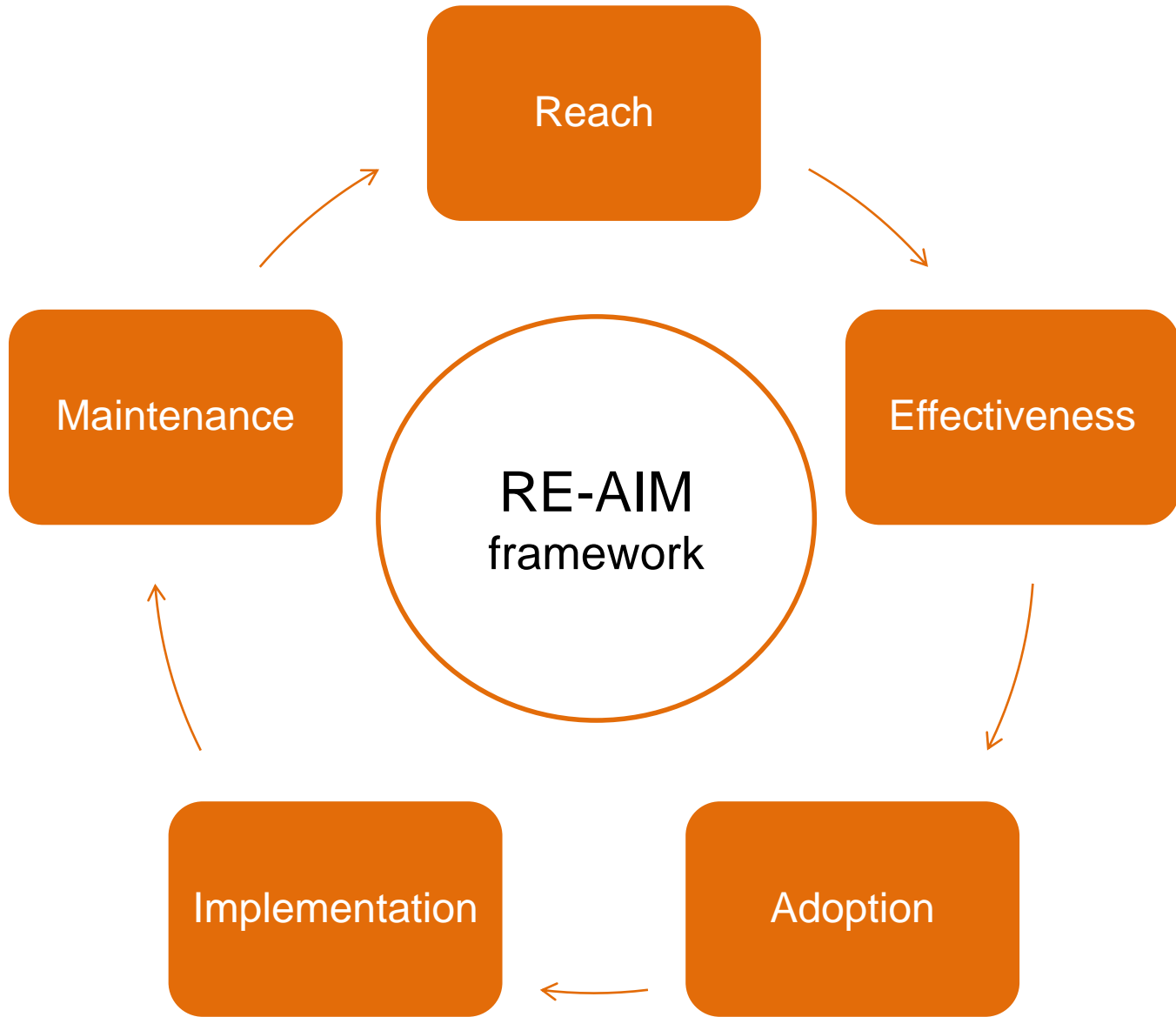
[General information \(Mantotman.nl\)](#)
[PrEP use \(PrEPnu\)](#)
[Drugs&Sex \(Control@Chems\)](#) -Dutch only-
[Vaccination against Hepatitis B \(GGDZL\)](#)
[Warned for HIV? PEPI \(Mantotman.nl\)](#)
[Questions regarding gender and sexual identity \(Queercare\)](#) -Dutch only-
[For all your questions about sex \(Sense\)](#)
[Help with sexual assault \(Centrum Seksueel Geweld\)](#)

[Click here](#) for more information on Monkeypox (RIVM).

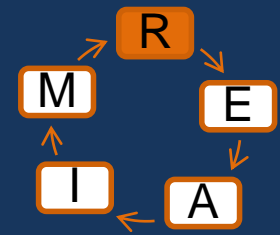
You can close this page.

²Theunissen, K. (2016). *Peer-driven testing for Chlamydia trachomatis in sexual and social networks: the value for chlamydia control.*

³Leenen, J. (2021). *Optimizing sexually transmitted infection care in men who have sex with men: Thinking outside the box.*



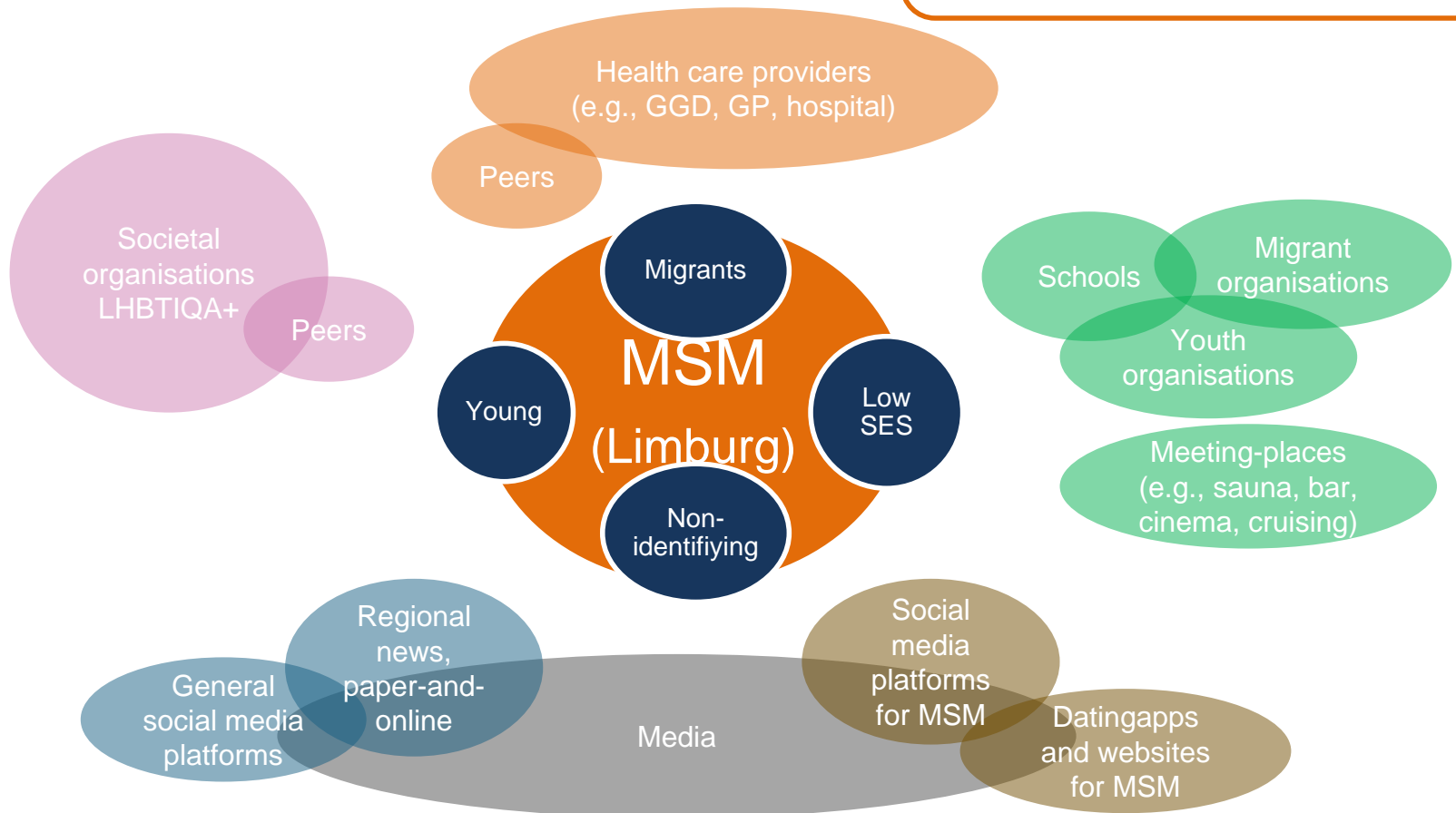
REACH



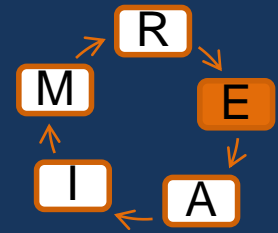
R) Reached population



700+ SENT
69% RETURNED

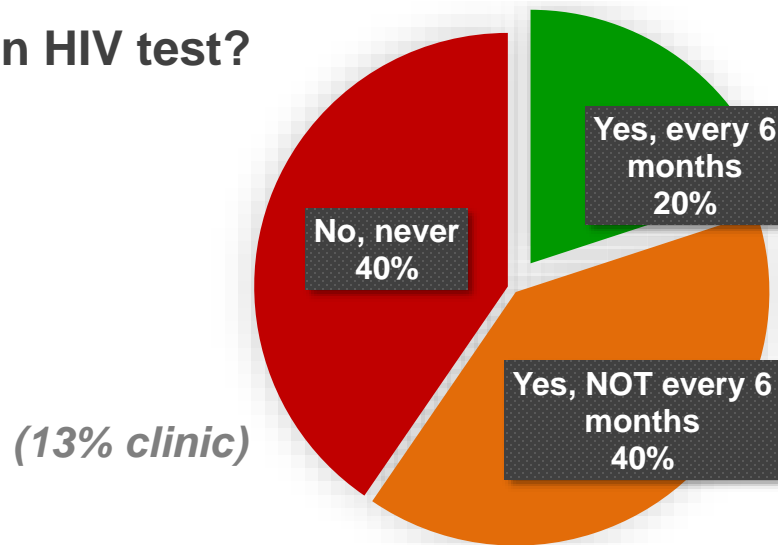


EFFECTIVENESS



E) Effectiveness on never-tested subgroups

Ever did an HIV test?



53% non-urban
(47% clinic)



34% sex with both
(20% clinic)

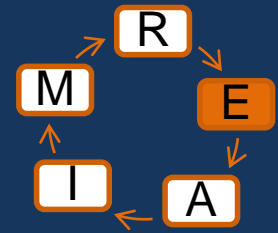


25% young
(18% clinic)



8% practical
(15% clinic)

EFFECTIVENESS



“The home kit is super convenient because you can take it at your own pace and time”

“At home, you can test discreetly. When I go to the GGD I risk running into people I know”

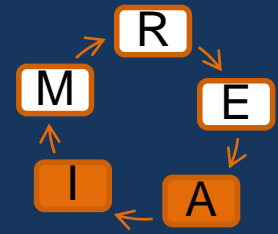


Blood collection most difficult

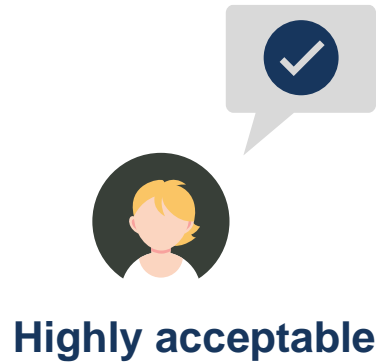
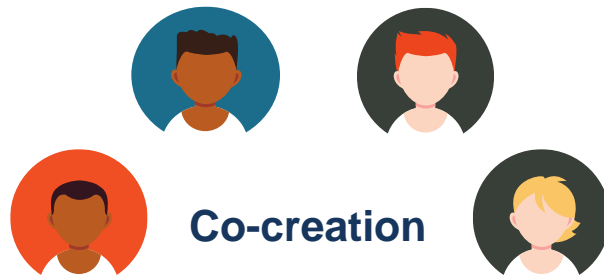


Willingness to use again (86%)

ADOPTION, IMPLEMENTATION



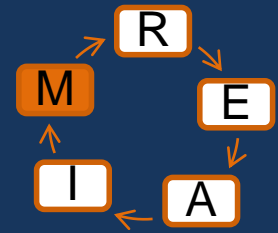
A) Adoption by health care providers



I) Fidelity of implementation



MAINTENANCE



M) Maintenance of intervention

➤ Maximising impact in “the Next step” by:

- ✓ Sustain dissemination
- ✓ Monitoring and evaluation



TAKE HOME MESSAGE



“To effectively embed home-based sexual health care, a systematic implementation approach is crucial”

TEAM LIMBURG4ZERO

Living Lab Public Health

Maastricht University Health Promotion

Nicole Dukers-Muijers
Rik Crutzen
Sarah Stutterheim

Maastricht University Social Medicine

CJD Hanneke Goense
Ymke Evers
Christian Hoebe

GGD Zuid Limburg

Angelique Lahaut
Roland van Hooren
Rocxanne Theuerzeit
Monique Steenland
Jacky Mendelsohn
Chantal Laheij

Suzan Hahn
Tamara Kleine
Ine de Bock

GGD Limburg Noord

Elaine Gommans
Cynthia Heckmann
Luuk Levels
Sebastiaan Pronk

MUMC+ Dep. Medical Microbiology

Inge van Loo
Rosalie Heuts

MUMC+ HIV treatment centre

Dirk Posthouwer
Robin Ackens

Regional stakeholders

COC Limburg
Community advisory board
SEKSHAG GPs
GPs throughout Limburg
Mondriaan
Gay saunas
Sex cinemas

Supported by

Aidsfonds
Soa Aids Nederland
Maastricht UMC+



15 jaar Samenwerken *Publieke*
aan een betere Gezondheid!
Academische Werkplaats
Publieke Gezondheid Limburg



Maastricht UMC+



Maastricht University