



# Implementation Strategies and Determinants among Prevention-Focus Ending the HIV Epidemic Projects

Morgan R. Purrier, PhD

**Adherence 2023 • June 11-13 • Puerto Rico**



# Roadmap

- Who we are
  - ISCI
  - Ending the HIV Epidemic
- Data & Methodology
- Findings
- Future Directions



# ISCI



The Implementation Science Coordination Initiative (ISCI) provides high-quality technical assistance for Ending the HIV Epidemic (EHE) funded implementation research (IR) teams and creates opportunities to share generalizable knowledge to help end the HIV epidemic in the United States.



# Ending the HIV Epidemic

Ending  
the  
HIV  
Epidemic  
IN THE U.S.

## GOAL:

**75%**  
reduction in new  
HIV infections  
by 2025  
and at least  
**90%**  
reduction  
by 2030.

[www.hiv.gov](http://www.hiv.gov)



**Diagnose** all people with HIV as early as possible.

**Treat** people with HIV rapidly and effectively to reach sustained viral suppression.



**Prevent** new HIV transmissions by using proven interventions, including pre-exposure prophylaxis (PrEP) and syringe services programs (SSPs).

**Respond** quickly to potential HIV outbreaks to get needed prevention and treatment services to people who need them.







# Ending the HIV Epidemic



**Diagnose** all people with HIV as early as possible.

**Treat** people with HIV rapidly and effectively to reach sustained viral suppression.



**Prevent** new HIV transmissions by using proven interventions, including pre-exposure prophylaxis (PrEP) and syringe services programs (SSPs).

**Respond** quickly to potential HIV outbreaks to get needed prevention and treatment services to people who need them.





# Research Question

- What are the determinants and implementation strategies proposed by projects with a prevention focus?
  - How do these determinants and strategies illustrate common themes and potential gaps?



# Data & Methodology

201 EHE Projects

185 with Treat or Prevent Pillars

82 with IRLM

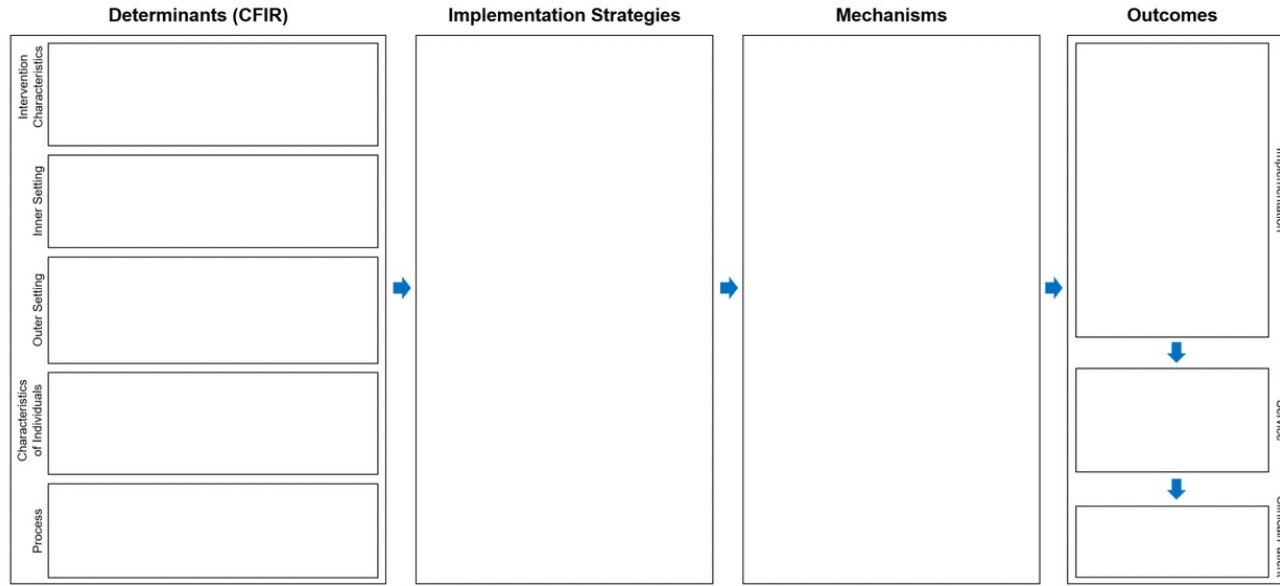
50 Prevention Projects

50



# Implementation Research Logic Model (IRLM)

## Logic Model for Implementation Research

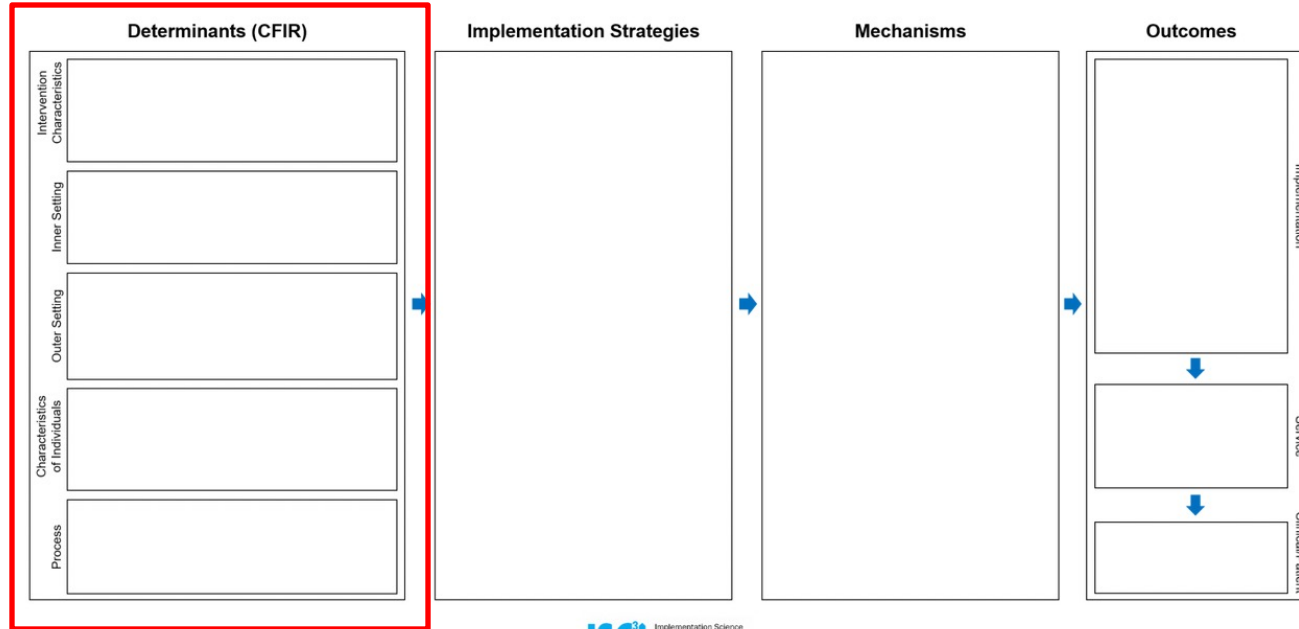






# Implementation Research Logic Model (IRLM)

## Logic Model for Implementation Research



# CFIR 2.0

#ADHERENCE2023

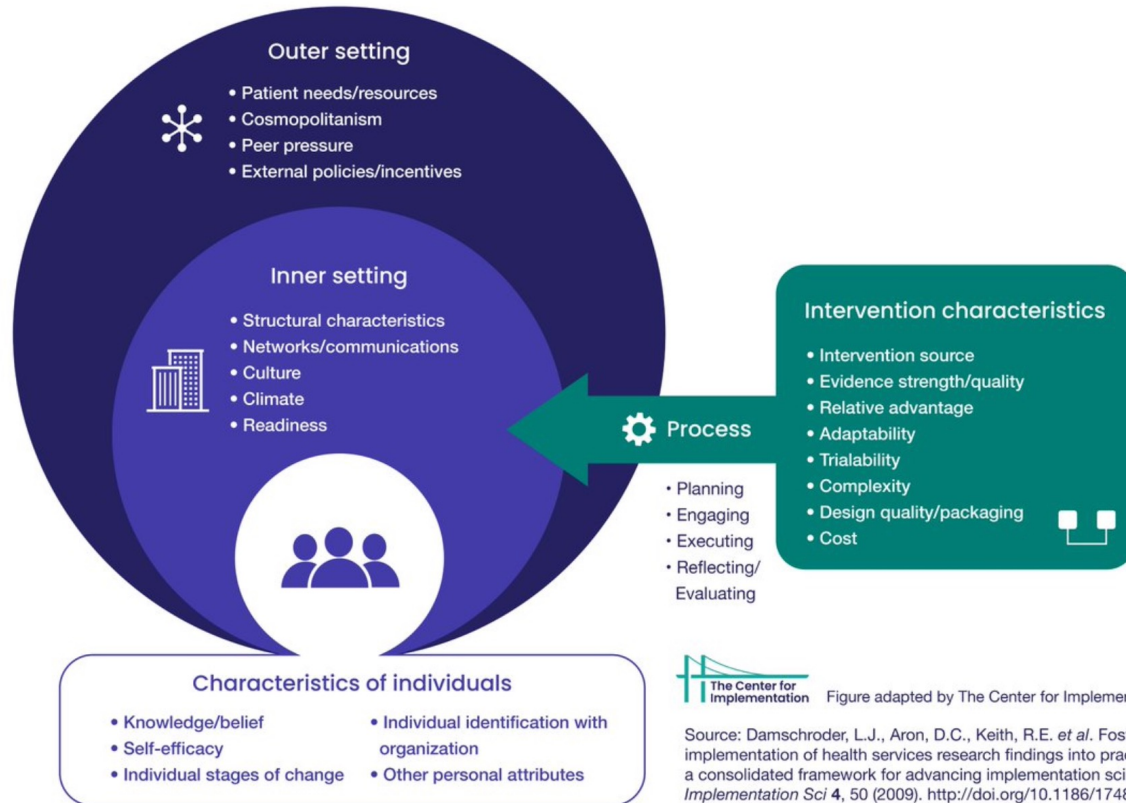


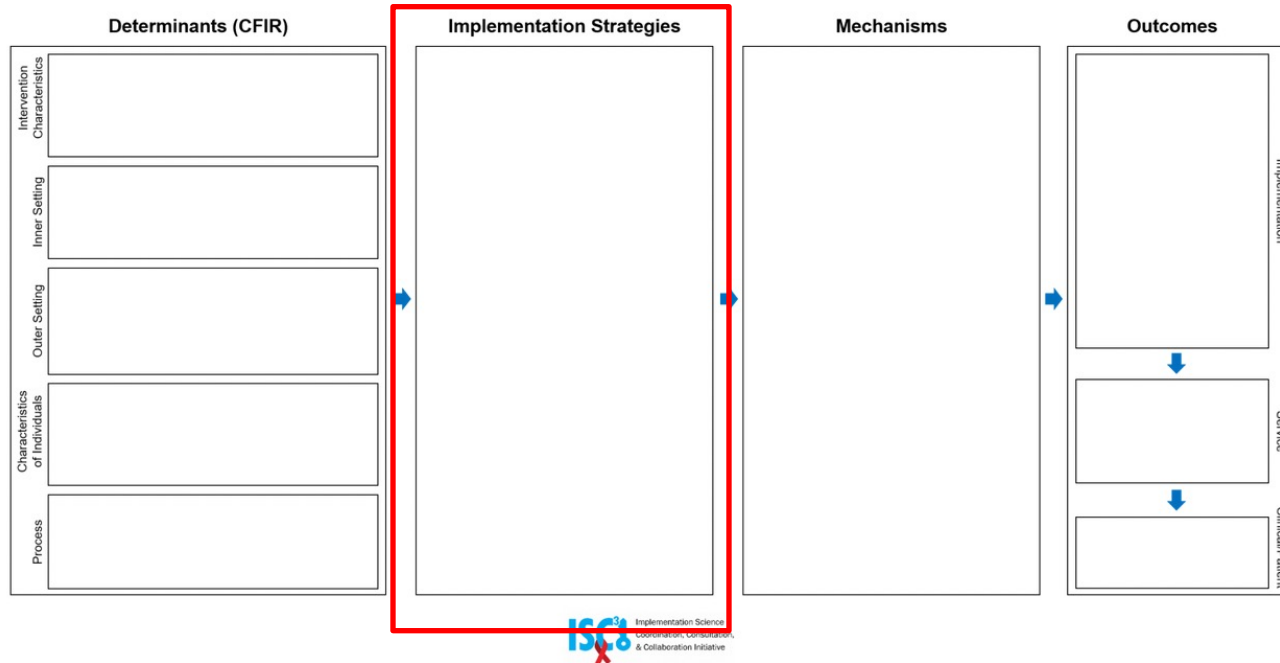
Figure adapted by The Center for Implementation

Source: Damschroder, L.J., Aron, D.C., Keith, R.E. *et al.* Fostering implementation of health services research findings into practice: a consolidated framework for advancing implementation science. *Implementation Sci* 4, 50 (2009). <http://doi.org/10.1186/17485908-4-50>



# Implementation Research Logic Model (IRLM)

## Logic Model for Implementation Research





## A SELECTION OF IMPLEMENTATION STRATEGIES

### Use evaluative and iterative strategies

- Assess for readiness and identify barriers and facilitators
- Audit and provide feedback
- Purposefully reexamine the implementation

### Adapt and tailor to context

- Tailor strategies
- Promote adaptability
- Use data experts

### Train and educate stakeholders

- Conduct ongoing training
- Distribute educational materials
- Use train-the trainer techniques

### Engage consumers

- Increase demand
- Use mass media
- Involve patients/consumers and family members

### Change infrastructure

- Mandate change
- Change record systems
- Change physical structure and equipment

- Facilitation
- Provide local technical assistance
- Provide clinical supervision

### Provide interactive assistance

- Identify and prepare champions
- Organize clinician implementation team meetings
- Identify early adopters

### Develop stakeholder interrelationships

- Remind clinicians
- Revise professional roles
- Facilitate relay of clinical data to providers

### Support clinicians

- Alter incentive/allowance structures
- Access new funding
- Fund and contract for the clinical innovation

### Utilize financial strategies

# Findings

#ADHERENCE2023

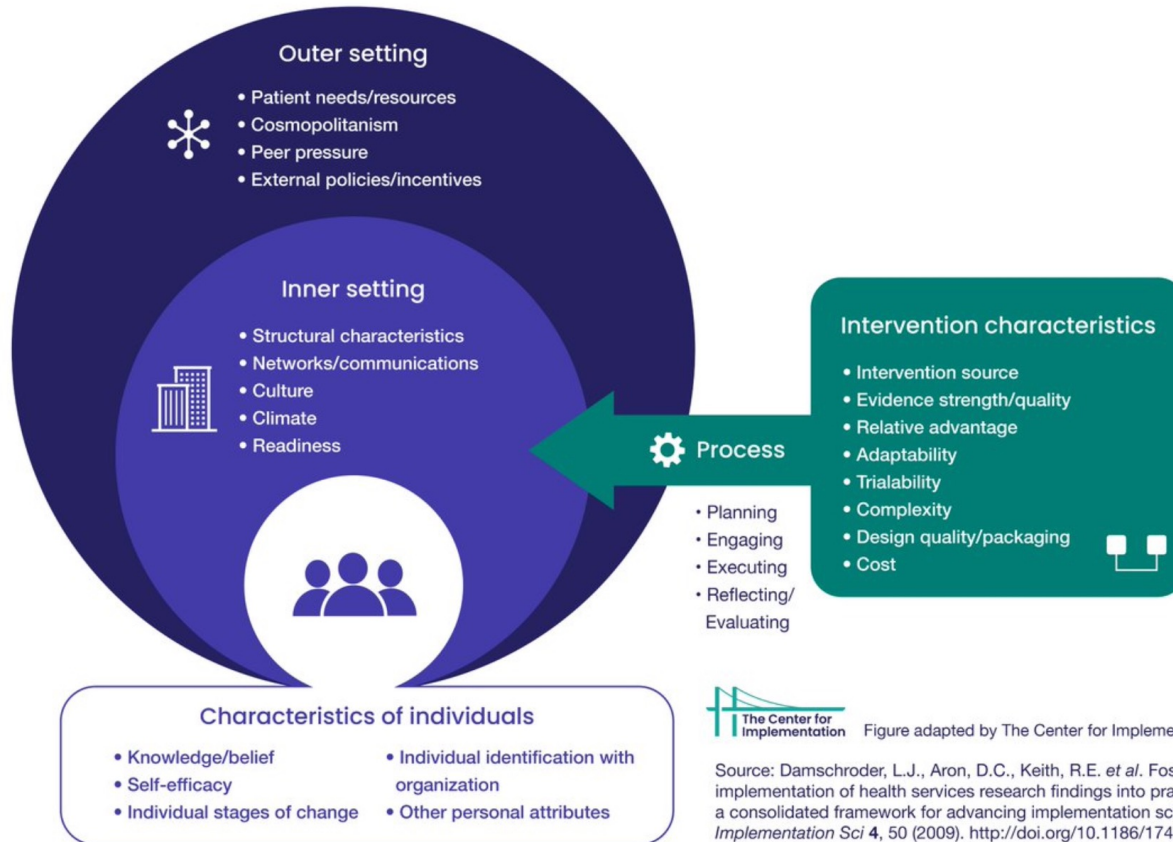


Figure adapted by The Center for Implementation

Source: Damschroder, L.J., Aron, D.C., Keith, R.E. *et al.* Fostering implementation of health services research findings into practice: a consolidated framework for advancing implementation science. *Implementation Sci* 4, 50 (2009). <http://doi.org/10.1186/17485908-4-50>



# Barriers

#ADHERENCE2023

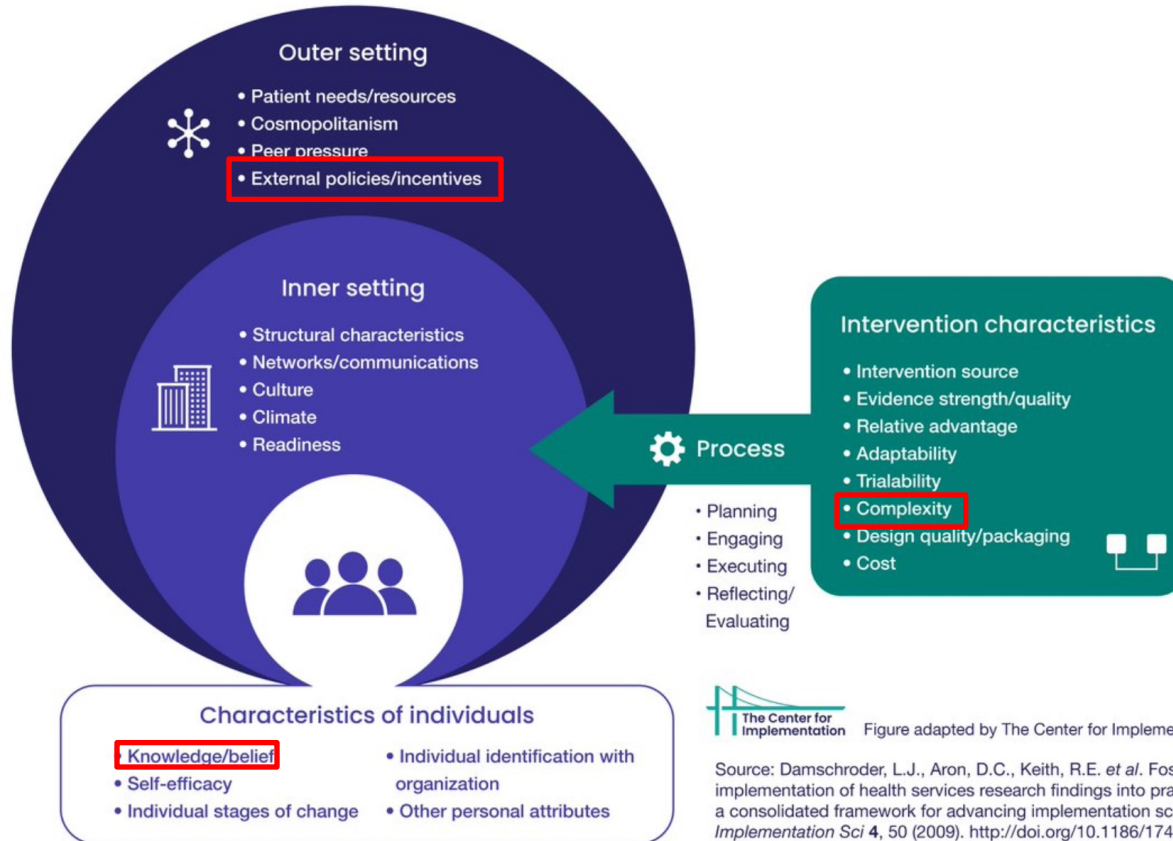
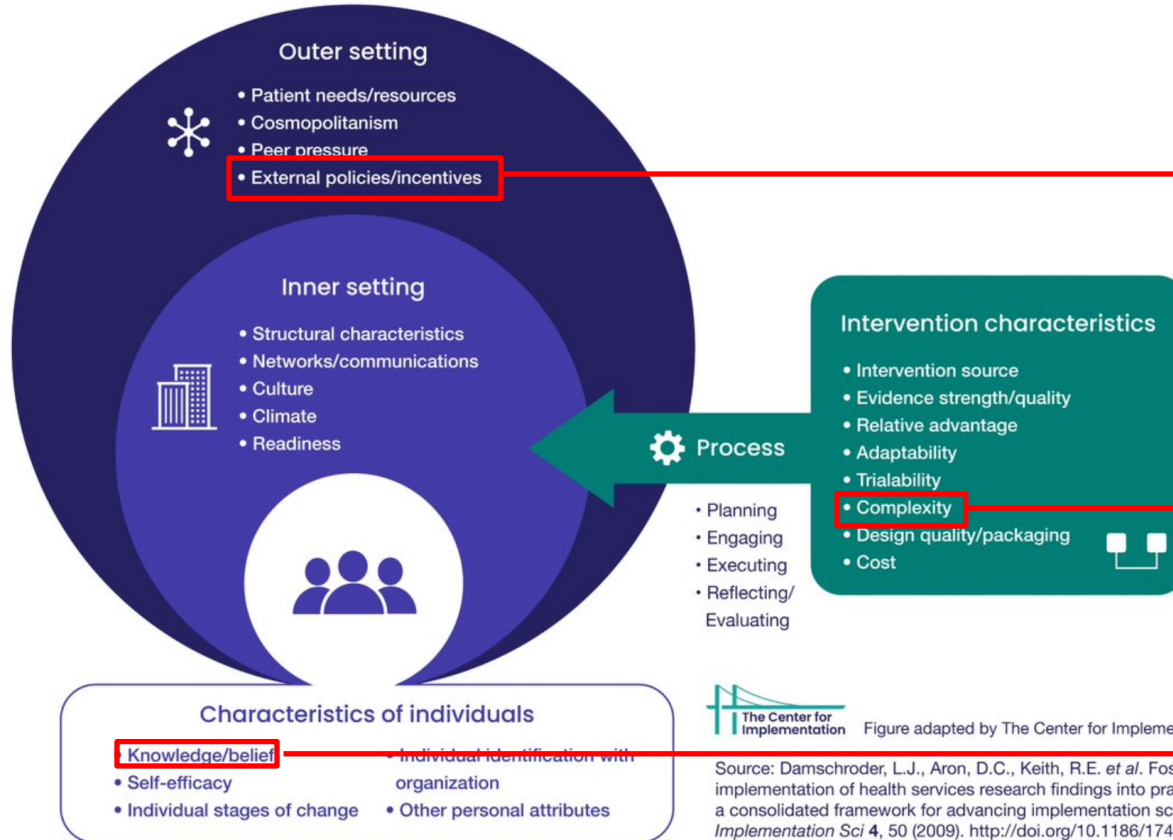


Figure adapted by The Center for Implementation

Source: Damschroder, L.J., Aron, D.C., Keith, R.E. *et al.* Fostering implementation of health services research findings into practice: a consolidated framework for advancing implementation science. *Implementation Sci* 4, 50 (2009). <http://doi.org/10.1186/17485908-4-50>

# Barriers

#ADHERENCE2023



External Policies  
25 (50%)

Complexity  
32 (64%)

Individual  
Knowledge  
27 (54%)



Figure adapted by The Center for Implementation

Source: Damschroder, L.J., Aron, D.C., Keith, R.E. *et al.* Fostering implementation of health services research findings into practice: a consolidated framework for advancing implementation science. *Implementation Sci* 4, 50 (2009). <http://doi.org/10.1186/17485908-4-50>

# Facilitators

#ADHERENCE2023

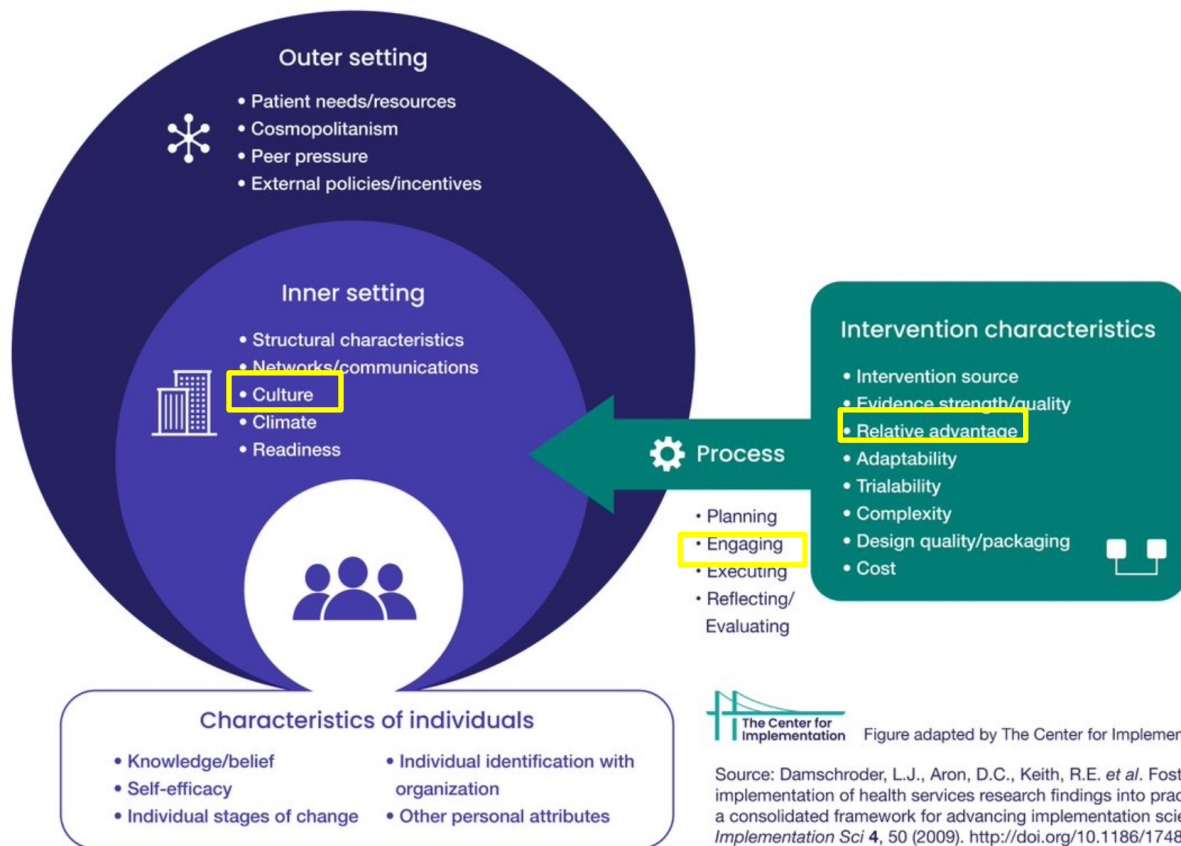
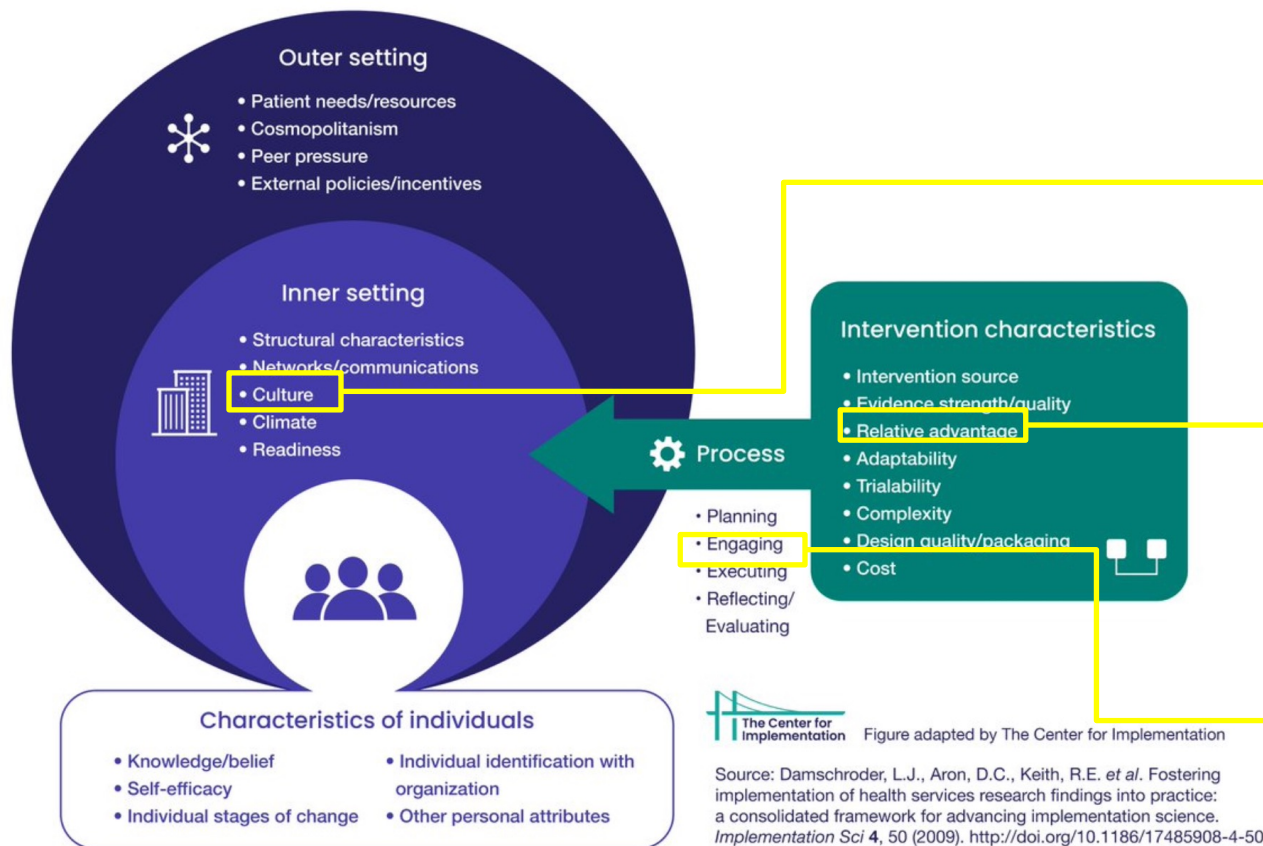


Figure adapted by The Center for Implementation

Source: Damschroder, L.J., Aron, D.C., Keith, R.E. *et al.* Fostering implementation of health services research findings into practice: a consolidated framework for advancing implementation science. *Implementation Sci* 4, 50 (2009). <http://doi.org/10.1186/17485908-4-50>

# Facilitators

#ADHERENCE2023



Culture  
16 (32%)

Relative  
Advantage  
15 (30%)

Engaging  
17 (34%)



Figure adapted by The Center for Implementation

Source: Damschroder, L.J., Aron, D.C., Keith, R.E. *et al.* Fostering implementation of health services research findings into practice: a consolidated framework for advancing implementation science. *Implementation Sci* 4, 50 (2009). <http://doi.org/10.1186/17485908-4-50>

# Strategies

#ADHERENCE2023



## Use evaluative and iterative strategies

- Assess for readiness and identify barriers and facilitators
- Audit and provide feedback
- Purposefully reexamine the implementation

## Adapt and tailor to context

- Tailor strategies
- Promote adaptability
- Use data experts

## Train and educate stakeholders

- Conduct ongoing training
- Distribute educational materials
- Use train-the trainer techniques

## Engage consumers

- Increase demand
- Use mass media
- Involve patients/consumers and family members

## Change infrastructure

- Mandate change
- Change record systems
- Change physical structure and equipment

## A SELECTION OF IMPLEMENTATION STRATEGIES

- Facilitation
- Provide local technical assistance
- Provide clinical supervision

### Provide interactive assistance

- Identify and prepare champions
- Organize clinician implementation team meetings
- Identify early adopters

### Develop stakeholder interrelationships

- Remind clinicians
- Revise professional roles
- Facilitate relay of clinical data to providers

### Support clinicians

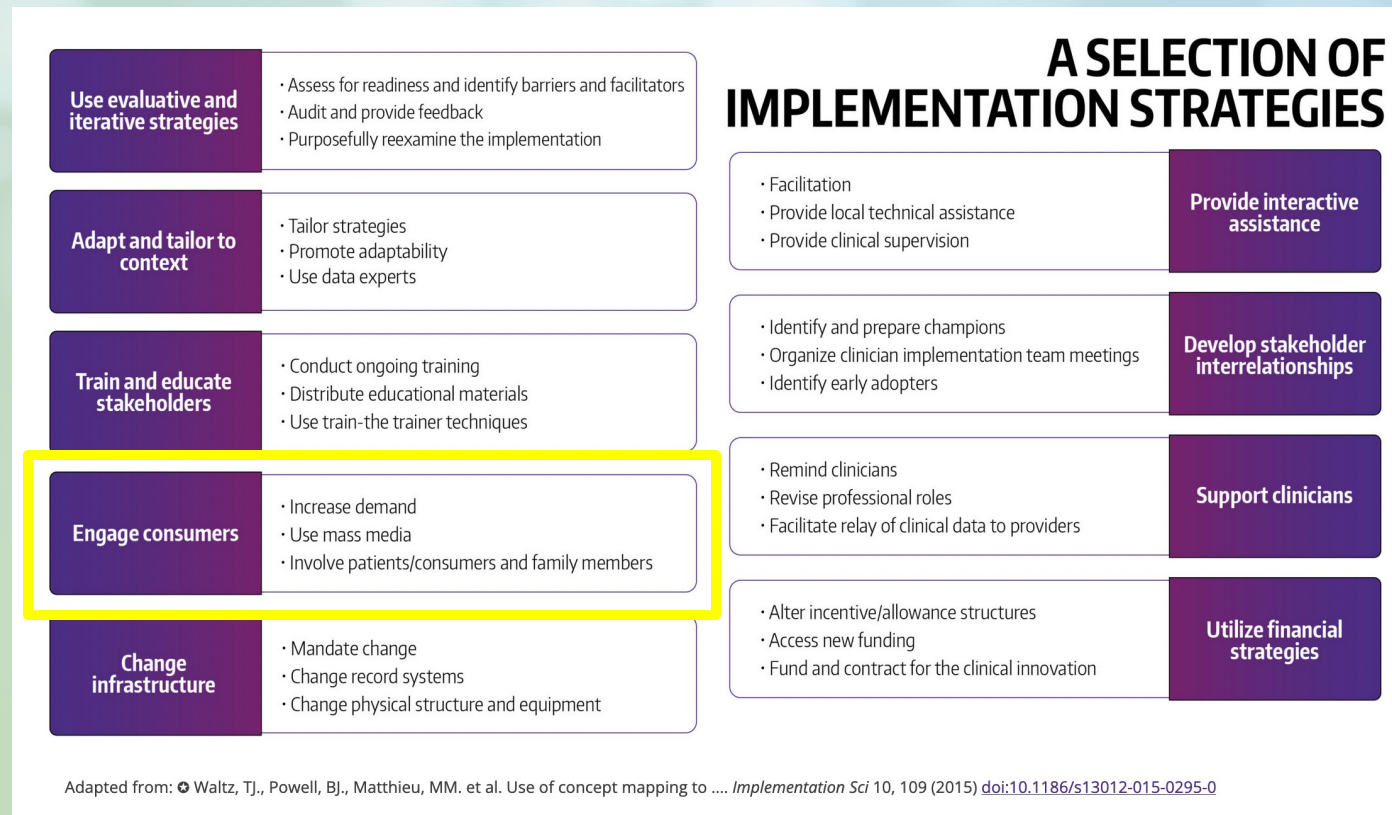
- Alter incentive/allowance structures
- Access new funding
- Fund and contract for the clinical innovation

### Utilize financial strategies



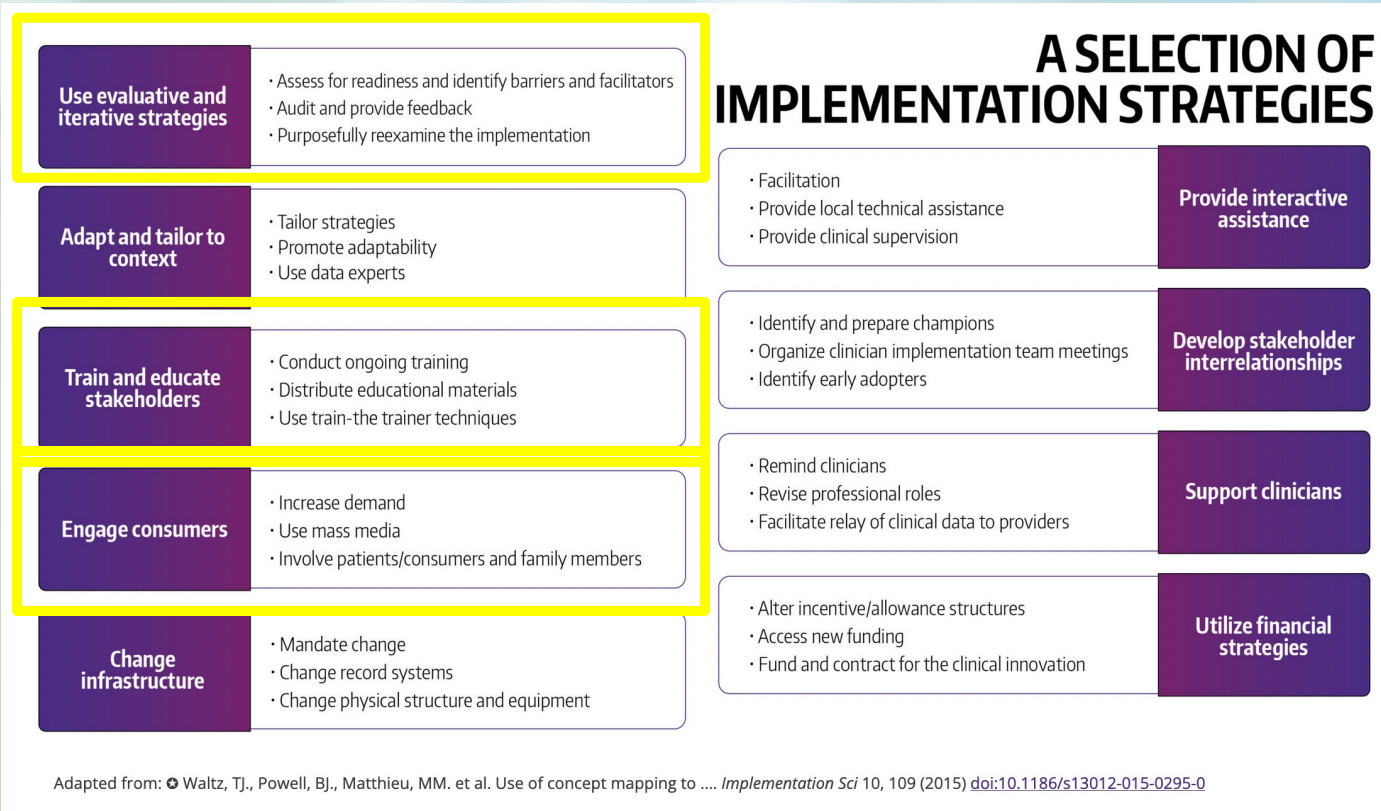
# Strategies

#ADHERENCE2023



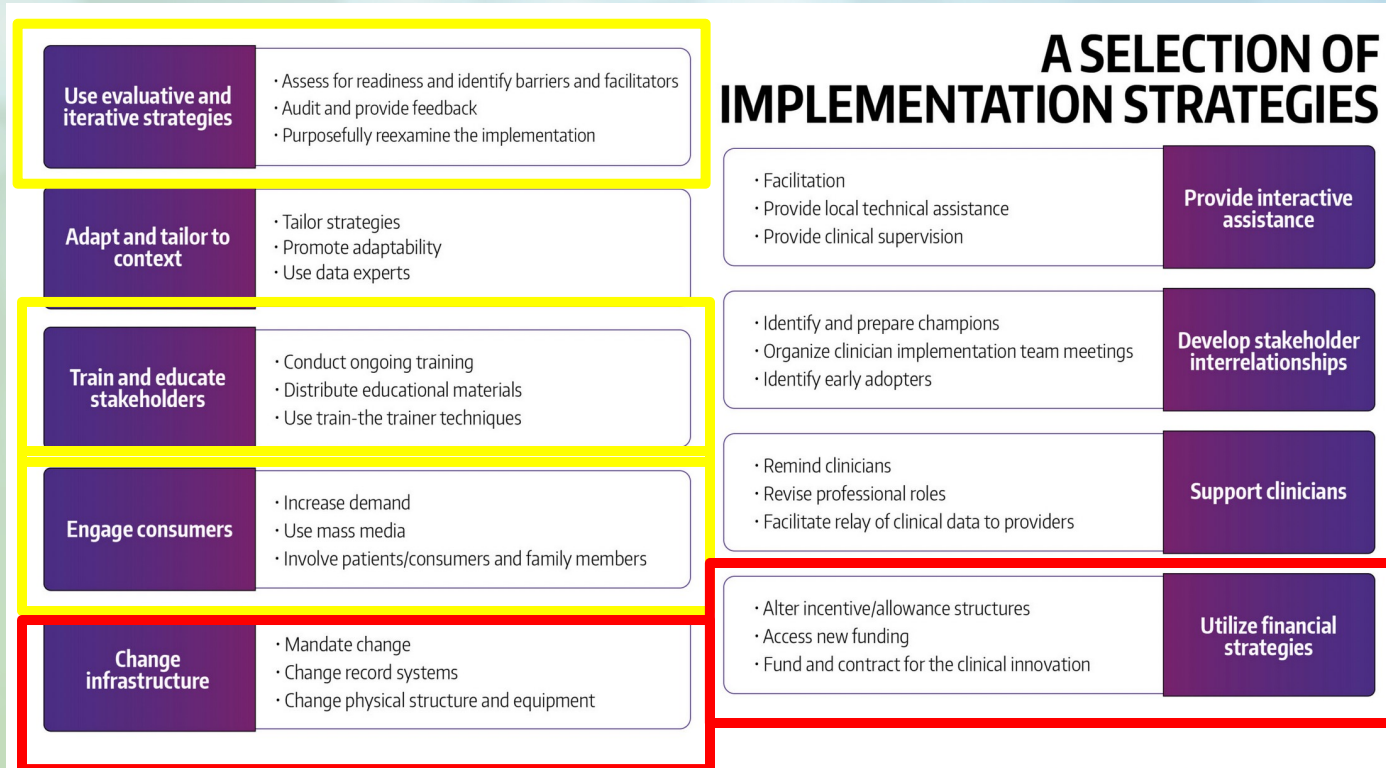
# Strategies

#ADHERENCE2023



# Strategies

#ADHERENCE2023



Adapted from: Waltz, TJ., Powell, BJ., Matthieu, MM. et al. Use of concept mapping to .... *Implementation Sci* 10, 109 (2015) doi:10.1186/s13012-015-0295-0



# Discussion and Future Directions

- Usefulness of IRLM as a data harmonization tool
- Highlights the need for support and development of strategies to address structural-level change
- Future research will examine further subsets of populations



# Thank You!

- Funded by an administrative supplement to the Third Coast Center for AIDS Research, a National Institutes of Health center (P30 AI117943)
- Maria Pyra, Artur Queiroz, Morgan R. Purrier, Nanette Benbow, Brian Mustanski. "Implementation Strategies and Determinants among Prevention-Focus Ending the HIV Epidemic Projects"



mogi\_p



mpurrier@northwestern.edu

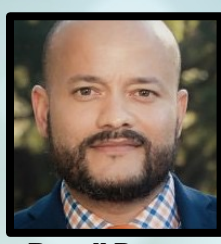




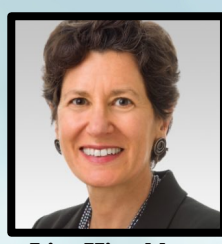
**Brian Mustanski**  
Co-Director



**Nanette Benbow**  
Co-Director



**Russell Brewer**  
Co-I



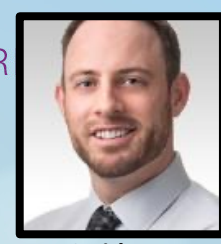
**Lisa Hirschhorn**  
Co-I



**Dennis H. Li**  
Co-I



**Sylvie Naar**  
Co-I



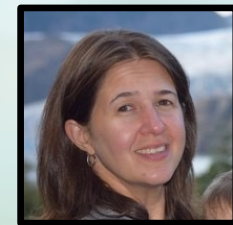
**JD Smith**  
Co-I



**Ginger McKay**  
Co-I



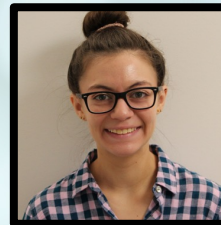
**Morgan Purrier**  
Project Director



**Maria Pyra**  
Co-I



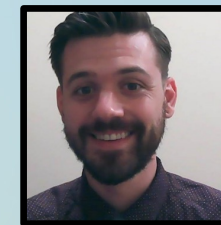
**Jasmine Deskins**  
Sr Research Study Coordinator



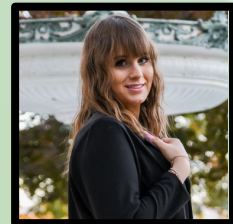
**Melissa Mongrella**  
Senior Project Coordinator



**Artur Queiroz**  
Postdoctoral Scholar



**James Merle**  
Postdoctoral Scholar



**Alithia Zamantakis**  
Postdoctoral Scholar



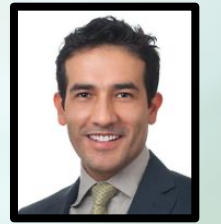
**Mica Pachicano**  
Research Study Assistant



**Eddie Salinas**  
Communications Coordinator



**Emily Urbanczyk**  
Research Study Assistant



**Carlos Gallo**  
Computational Methodologist



**Juan Pablo Zapata**  
Postdoctoral Scholar

