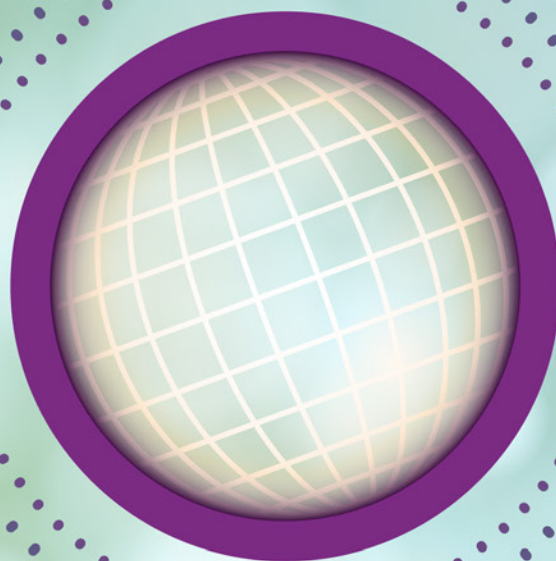


## Poster Abstracts Schedule

18th International  
Conference on  
HIV TREATMENT  
AND PREVENTION  
ADHERENCE



#Adherence2023



# Adherence 2023

Advancing Equity and Innovation for Impact

JUNE 11-13, 2023 • PUERTO RICO

Jointly provided by



Montefiore

This activity is supported by an independent medical education grant from Merck & Co., and corporate sponsorships from Gilead Sciences and ViiV Healthcare.



Please refer to the digital Poster Abstracts Book to view full abstracts. Scan the QR code or visit [www.iapac.org/conferences/adherence-2023/](http://www.iapac.org/conferences/adherence-2023/) to download the digital booklet.



## MONITOR 1

TIME	ABSTRACT
2:00pm – 2:05pm	<b>1031</b> Loneliness among Black/African-American Adults Living with HIV: Sociodemographic and Psychosocial Correlates and Implications for Adherence Nipher Malika presenting
2:05pm – 2:10pm	<b>1115</b> Title: Improving Motivational Interviewing with Cultural Humility and Antiracism for HIV-Related Behavior Change Maurice Bulls presenting
2:10pm – 2:15pm	<b>1172</b> COVID-19 Vaccination Acceptability among People Living With HIV Aldonza Milián presenting
2:15pm – 2:20pm	<b>1006</b> The Synergistic Effect of Social Support and Depressive Symptoms on ART Adherence among PLWH Muziwandile Luthuli presenting
2:20pm – 2:25pm	<b>1168</b> Psychosocial Factors Predicting Transitions in HIV Disclosure Stages: An Evaluation of a Theory-Based Parental HIV Disclosure Intervention among Parents Living with HIV in China Ran Zhang presenting
2:25pm – 2:30pm	<b>1202</b> Mitigating the Disruption of HIV Research during the COVID-19 Pandemic Andres Vazquez presenting
2:30pm – 2:35pm	<b>1305</b> Prevención sin Barreras: Scaling Up PrEP with Spanish Speaking Latinx Joana Lagunes Arauz presenting
2:35pm – 2:40pm	<b>1346</b> An Exploratory Program of an At-Home HIV Testing Kit Program with a Collaboration of SHAPE Tri-County Partners to Address the Rates of STIs/HIV in the Tri-County Area of Charleston, SC Shanna Hastie presenting
2:40pm – 2:45pm	<b>1016</b> Factors Associated with Disengagement and Reengagement in Care among Persons Living with HIV in Southern US Cohort Naseem Alavian presenting
2:45pm – 2:50pm	<b>1033</b> Cultural Competency and Holistic Harm Reduction Zina Age presenting
2:50pm – 2:55pm	<b>1040</b> Development of a Person-Centered Care Framework and Tool Jessica Posner presenting
2:55pm – 3:00pm	<b>1290</b> Barriers to Care and Respond to the Needs of BMSM Tony Sillemon presenting



## MONITOR 2

TIME	ABSTRACT
2:00pm – 2:05pm	<b>1095</b> Leveraging OVC Programs to Reach 95-95-95 for Mothers and their HIV-Exposed Infants Hanna Amanuel presenting
2:05pm – 2:10pm	<b>1127</b> Lessons Learned from iTransition: An mHealth Intervention to Support Transition to Adult Care for Youth Living with HIV Sophia Hussen presenting
2:10pm – 2:15pm	<b>1185</b> Disparities in Cardiovascular Risk Factors among Hispanics with HIV in a Southern City in the USA Jorge Fleites Jr presenting
2:15pm – 2:20pm	<b>1241</b> A Qualitative Development of an HIV Disclosure Tool in Rural, Southwestern Uganda Pooja Chitneni presenting
2:20pm – 2:25pm	<b>1027</b> Trajectories of Antiretroviral Therapy Adherence and Virologic Failure in Women with HIV in the United States Abubaker Saeed presenting
2:25pm – 2:30pm	<b>1222</b> The Impact of Person-Centered Care (PCC) on Pediatric Viral Load Suppression in Copperbelt Province, Zambia Lackey Kawanga presenting
2:30pm – 2:35pm	<b>1209</b> Impact of Experiences of Violence on HIV Care Engagement among Young Black and Latinx Men who have Sex with Men (MSM) Living with HIV: A Sequential Mixed-Methods Study Victoria Frye presenting
2:35pm – 2:40pm	<b>1266</b> EPIC: Enhancing Peer Involvement in Care Vanessa Johnson presenting
2:40pm – 2:45pm	<b>1279</b> Exploring Participant Perceived Impacts of an Urban Gardens and Peer Nutritional Counseling Intervention with People Living with HIV and Food Insecurity in the Dominican Republic: A Qualitative Analysis Alane Celeste-Villalvir presenting
2:45pm – 2:50pm	<b>1299</b> Factors Associated with Achieving Viral Suppression among People Living with HIV in Ghana: A Retrospective Analysis Abdul-Wahab Inusah presenting
2:50pm – 2:55pm	<b>1325</b> Perceptions and Realities of Care Engagement for Youth Living with HIV in the US South: A Call for Youth Voice and Reduction of Structural Barriers to Care in Program Design Catherine Johnson presenting



## MONITOR 3

TIME	ABSTRACT
2:00pm – 2:05pm	<b>1327</b> The Zambia U-Report Platform Rita Chilambu-Kalamatila presenting
2:05pm – 2:10pm	<b>1007</b> Initiatives to Integrate Patient-Reported Outcome Measures (PROMs) into Routine HIV Care: A Rapid Scoping Review Kim Engler presenting
2:10pm – 2:15pm	<b>1184</b> Implementing a New Method of Self-Collected Finger-Stick Blood for Remote HIV Testing to Help PWH Maintain Engagement in Care Amanda J. Smith presenting
2:15pm – 2:20pm	<b>1155</b> Tracking Therapeutic Failure through the Transition from TLE to TLD Irenio Gaspar presenting
2:20pm – 2:25pm	<b>1156</b> Analysis of Advanced HIV Disease Eligibility Differences in Mozambique Irenio Gaspar presenting
2:25pm – 2:30pm	<b>1157</b> Monitoring of Mozambique National CD4 Testing for Advanced HIV Disease Eudoxia Filipe presenting
2:30pm – 2:35pm	<b>1269</b> Empowering Women: A Logistic Regression Analysis to Identify Factors Associated with HIV Treatment Continuity among Female Sex Workers in Ghana David Nartey presenting
2:35pm – 2:40pm	<b>1291</b> Achieving Positive Outcomes: Investigating the Factors that Impact HIV Treatment Continuity among Young Adults in Western Region, Ghana Issifu Zakaria Dindan presenting
2:40pm – 2:45pm	<b>1297</b> Reaching Key Populations with Timely and Credible Information on COVID-19 through the Healthy Living Platform Richard Adupong presenting
2:45pm – 2:50pm	<b>1023</b> Rapid HIV Testing and Counseling in Labour in GUI and Gbessa Villages in The FCT Abuja Nigeria Dennis Anthony presenting
2:50pm – 2:55pm	<b>1054</b> SOMOS Alianza: Building a Strategic Alliance to Advance Implementation Research and Practice and End the HIV Epidemic affecting Latino MSM Audrey Harkness presenting
2:55pm – 3:00pm	<b>1250</b> Trends in the HIV Status Neutral Care Continuum Using Medicaid Claims Data, Illinois, USA Joseph Mason presenting



## MONITOR 4

TIME	ABSTRACT
2:00pm – 2:05pm	<b>1082</b> PharmD and RN-Led PrEP Implementation: Long-Acting Cabotegravir Melanie Berry presenting
2:05pm – 2:10pm	<b>1271</b> Linkage to Treatment and HIV Prevention Services for Patients with Syphilis Diagnosed through Routine Emergency Department Screening Jackson Montgomery presenting
2:10pm – 2:15pm	<b>1020</b> Assessing Perceptions and Preferences around Long-Acting Injectables (APPLI) in Safety-Net Services Programs for People with Barriers to HIV Care and Treatment Engagement Rebecca Zimba presenting
2:15pm – 2:20pm	<b>1072</b> Implementing Bundled Interventions to Reduce HIV Disparities among Black Women Living with HIV Allison Byrd presenting
2:20pm – 2:25pm	<b>1141</b> Implementation Gaps, Successes, and Determinants in Scaling Up and Disseminating HIV-Prevention and Treatment Services to Latino MSM in Three Ending the HIV Epidemic Priority Jurisdictions: A Rapid Qualitative Analysis Nequiel Reyes presenting
2:25pm – 2:30pm	<b>1203</b> If I Had Less Melanin, I would have More Access: Implementation Barriers and Facilitators to Long-Acting Injectable PrEP and ART Treatment Uptake among Black and Latino MSM in California and New York Orlando Harris presenting
2:30pm – 2:35pm	<b>1220</b> In the Era of COVID-19, Safeguarding PrEP Adherence and Continuity in AGYW in Zambia Brenda Simpasa presenting
2:35pm – 2:40pm	<b>1246</b> What Makes Peers Credible? A Qualitative Analysis of Peer Credibility in HIV Prevention and Treatment Programs for Latino MSM Jahn Jaramillo presenting
2:40pm – 2:45pm	<b>1324</b> HIV and Aging: Identifying the Need for Geriatric Care and Services Jessica Schmitt presenting
2:45pm – 2:50pm	<b>1267</b> Determinants and Strategies among HIV Treatment in Ending the HIV Epidemic Projects Morgan Purrier presenting
2:50pm – 2:55pm	<b>1283</b> Lingering Providers' Stigma towards Key Populations May Influence Their PrEP Prescribing Behaviors: Findings From a Qualitative Study in Ghana Edward Adiibokah presenting
2:55pm – 3:00pm	<b>1083</b> Re-Engagement at AIDS Healthcare Foundation (AHF) HIV Clinics in Eswatini in 2022: Lessons from Clients Returning After More than 90 Days Out of Care Sukoluhle Khumalo presenting



## MONITOR 5

TIME	ABSTRACT
2:00pm – 2:05pm	<b>1309</b> Student Perspectives Regarding HIV and STI Testing at a Historically Black College and University in the Southern United States Jessica Corcoran presenting
2:05pm – 2:10pm	<b>1011</b> Mental Health Initiative to End the Epidemic Febuary D'Auria presenting
2:10pm – 2:15pm	<b>1014</b> Prevention S.A.V.E.S.. Kristin Garling presenting
2:15pm – 2:20pm	<b>1038</b> Structuring Services around the Client to Keep People on ART Jessica Posner presenting
2:20pm – 2:25pm	<b>1039</b> Identifying, Engaging, and Sustaining Men (20-34 years) for Epidemic Control in Zambia Jessica Posner presenting
2:25pm – 2:30pm	<b>1043</b> A Network Analysis of Positive Psychosocial Factors and ART Adherence among Black Women Living with HIV Chika Christie Chuku presenting
2:30pm – 2:35pm	<b>1059</b> Long-Acting Antiretroviral Therapy Attribute Importance and Interest among PLWH in Florida Rebecca Fisk-Hoffman presenting
2:35pm – 2:40pm	<b>1060</b> Who Wants a Long-Acting Injectable Antiretroviral Therapy for HIV Treatment? Rebecca Fisk-Hoffman presenting
2:40pm – 2:45pm	<b>1073</b> Evaluating the Impact of Substance Use on Viral Suppression and Self-Reported ARV Adherence among PWH, DC Cohort Morgan Byrne presenting
2:45pm – 2:50pm	<b>1094</b> Barriers and Facilitators to Antiretroviral Therapy Initiation and Adherence in Indonesia: Perspectives of People Living with HIV and HIV Service Providers Bona Hutahaean presenting
2:50pm – 2:55pm	<b>1128</b> Predictors of Mental Health Service Utilization among Young Black Gay, Bisexual, and other Men who have Sex with Men Living with HIV Sophia Hussen presenting
2:55pm – 3:00pm	<b>1117</b> Supporting our Patients Holistically Khaled Salama presenting





## MONITOR 6

TIME	ABSTRACT
2:00pm – 2:05pm	<b>1286</b> Cost Analyses of Using an Ingestible Sensor System to Improve Adherence to Antiretrovirals in HIV-Infected Adults Yan Wang presenting
2:05pm – 2:10pm	<b>1116</b> Construct Validity of the 7-Item I-Score Patient-Reported Outcome Measure: A Promising Tool to Comprehensively Assess Adherence Barriers in HIV Care Kim Engler presenting
2:10pm – 2:15pm	<b>1143</b> Comparison of Measures of Adherence to Antiretroviral Therapy in a Population of Young African American Men who have Sex with Men Cornelia Wagner presenting
2:15pm – 2:20pm	<b>1229</b> Implementing Immediate Initiation of ART in Philadelphia EHE-Funded Sites Christina Cruz presenting
2:20pm – 2:25pm	<b>1233</b> Pharmacists Identified Required Resources Needed for Adherence Promotion Activities to Persons Living with HIV in Ambulatory Pharmacy Settings Jennifer Kibicho presenting
2:25pm – 2:30pm	<b>1243</b> Subjective Exchange for Solutions to Improve HIV Adherence Zeke Garcia Murton presenting
2:30pm – 2:35pm	<b>1346</b> An Exploratory Program of an At-Home HIV Testing Kit Program with a Collaboration of SHAPE Tri-County Partners to Address the Rates of STIs/HIV in the TriCounty Area(s) of Charleston, SC Shanna Hastie presenting
2:35pm – 2:40pm	<b>1268</b> Gender Differences in the Association of Traumatic Life Experiences with HIV Viral Suppression among People Living with HIV in Florida Nanyangwe Siuluta presenting
2:40pm – 2:45pm	<b>1154</b> Trends in Non-Adherence Rates for ART Services: A Review of Evidence from Mozambique Orrin Tiberi presenting
2:45pm – 2:50pm	<b>1208</b> Depression Severity Predicts Antiretroviral Therapy Adherence among Black People with HIV in the Individual Community Care for HIV/AIDS Now: Getting Engaged (iC-CHANGE) Study Vanessa Serrano presenting
2:50pm – 2:55pm	<b>1281</b> Exploring the Barriers to HIV Treatment Continuity among Men who have Sex with Men in Ghana Thomas Ayuomah Azugnue presenting
2:55pm – 3:00pm	<b>1124</b> Developing a Target Product Profile for Point-of-Care HIV Medication Adherence Test through a Multi-Stakeholder Consultation Noel Kalanga presenting





## MONITOR 7

TIME	ABSTRACT
2:00pm – 2:05pm	<b>1306</b> ART Adherence Experiences of People Living with HIV Receiving a Point-of-Care Adherence Assay Versus Standard of Care: A Qualitative Data from Cape Town, South Africa Lauren Jennings presenting
2:05pm – 2:10pm	<b>1017</b> Preferred Characteristics of mHealth Interventions to Support HIV Testing and PrEP Decision Making Steven John presenting
2:10pm – 2:15pm	<b>1025</b> PrEP Awareness and Use among Persons Receiving CDC-Funded HIV Testing in Non-Healthcare Settings Deesha Patel presenting
2:15pm – 2:20pm	<b>1123</b> Perceptions of Cisgender Black Women Regarding Self-Advocacy for Sexual Health with Healthcare Providers Mandy Hill presenting
2:20pm – 2:25pm	<b>1136</b> Factors Influencing Utilization of Oral Pre-Exposure Prophylaxis (PrEP) among Adolescent Girls and Young Women (AGYW) in Chingola District of Zambia James Mwanza presenting
2:25pm – 2:30pm	<b>1147</b> Tailored to Meet Their Needs: The Use of Peer Mentors to Improve Pre-Exposure Prophylaxis (PrEP) Continuation among At-Risk Adolescent Girls and Young Women in Peri-Urban Communities in Zambia Musonda Musonda presenting
2:30pm – 2:35pm	<b>1192</b> The Prevention and Behavioural Intervention (PBI) Model: Increasing PrEP Adherence in Zambia Pule Mundende presenting
2:35pm – 2:40pm	<b>1197</b> Early Adopters of Long-Acting Injectable Cabotegravir for HIV Prevention: A Cohort Analysis at an Academic Hospital in New York City Joshua Klein presenting
2:40pm – 2:45pm	<b>1272</b> “Yes, She Delivers it to My House, but I Still Miss Taking”: An Explanatory Analysis of Low Adherence Despite Peer-delivery of HIV PrEP in Kisumu, Kenya Kevin Oware presenting
2:45pm – 2:50pm	<b>1326</b> Accelerated Oral PrEP Uptake among KP/PPs at DIC: Inputs from Enhanced Peer-Led Community Outreach Approach-Busia District Edward Maweje presenting
2:50pm – 2:55pm	<b>1008</b> PrEP Service Delivery Models for Emergency Departments: A Qualitative Study Yvette Calderon presenting
2:55pm – 3:00pm	<b>1130</b> Quantitative Analysis of a Warm Handoff Approach for Cisgender Black Women to Pre-Exposure Prophylaxis (PrEP): Linkage and Follow-up Mandy Hill presenting



## MONITOR 8

TIME	ABSTRACT
2:00pm – 2:05pm	<b>1009</b> Socio-Cultural and Pharmacological Factors Influencing PrEP Adherence among Members of Key Populations (MSM and FSW) in Abia State, Nigeria: A Cross-Sectional Quantitative Study Miracle Uzu presenting
2:05pm – 2:10pm	<b>1034</b> A Latent Class Analyses of Economic Stability, Medical Mistrust, and Barriers to Care in Relation to PrEP Knowledge in Black Communities in Miami, FL Devina Boga presenting
2:10pm – 2:15pm	<b>1067</b> Barriers and Facilitators to Accessing HIV Prevention and Treatment Services among Migrant Youth Kevin Li presenting
2:15pm – 2:20pm	<b>1096</b> Lessons Learned in Developing a Multidisciplinary PrEP Bootcamp for Healthcare Professional Students Crystal Walker presenting
2:20pm – 2:25pm	<b>1108</b> Exploring Predictors of the Decision to Initiate PrEP among Cisgender Black Women Mandy Hill presenting
2:25pm – 2:30pm	<b>1111</b> Perceptions of PrEP as a Tool for Self-Protection among Cisgender Black Women Mandy Hill presenting
2:30pm – 2:35pm	<b>1112</b> Adapting Provider Training and PrEP Advertising to Increase PrEP Uptake among Black Cisgender Women Samantha Devlin presenting
2:35pm – 2:40pm	<b>1135</b> HIV Risk Awareness and Pre-Exposure Prophylaxis (PrEP) Cascade among Black Women in the Southern United States Sylvia Shangani presenting
2:40pm – 2:45pm	<b>1138</b> Knowledge and Attitudes of Obstetrics-Gynecology Residents Regarding HIV Pre-Exposure Prophylaxis among Medicaid and Uninsured Patients Tal Lee presenting
2:45pm – 2:50pm	<b>1139</b> Examining Social Inequities in Pre-Exposure Prophylaxis Adherence among a National Sample of Publicly Insured Patients Natalie Crawford presenting
2:50pm – 2:55pm	<b>1151</b> Access to Pre-Exposure Prophylaxis for HIV Prevention among Adolescent Girls and Young Women Aged 15-24: Lessons Learned from Three DREAMS Districts in Malawi Naomi Reich presenting
2:55pm – 3:00pm	<b>1186</b> Factors Associated With Mortality among Patients on ART: Analysis from a Case-Control Study in Côte d'Ivoire Lauren Greenberg presenting



## MONITOR 9

TIME	ABSTRACT
2:00pm – 2:05pm	<b>1211</b> Acceptability of an Automated Directly Observed Therapy Application for PrEP Adherence Support among Young Men who have Sex with Men: A Qualitative Exploration Jennifer Vellozo presenting
2:05pm – 2:10pm	<b>1216</b> Oral Pre-Exposure Prophylaxis (PrEP) Uptake in Walk-in STI Clinics Deborah Morris-Harris presenting
2:10pm – 2:15pm	<b>1227</b> Emotional Stress is More Detrimental than the Virus Itself: Towards an Understanding of HIV Testing and Pre-Exposure Prophylaxis (PrEP) Use among Internal Migrant Men in South Africa Maria Nardell presenting
2:15pm – 2:20pm	<b>1244</b> Towards a Better Understanding of HIV Prevention Knowledge among Latino MSM: A Latent Class Analysis Study Jahn Jaramillo presenting
2:20pm – 2:25pm	<b>1262</b> The Effects of Socially Disadvantaged Identities and Structural Factors on the Use of HIV Prevention and/or Sexual Health Services among Immigrant Latino Gay/Bisexual/Men who have Sex with Men Residing in the United States Ronald Brooks presenting
2:25pm – 2:30pm	<b>1274</b> High Long-Term PrEP Retention Seen in a Community PrEP Specialist-Led Clinic at a Federally Qualified Health Center in Washington, DC Rupa Patel presenting
2:30pm – 2:35pm	<b>1303</b> Pilot Implementation Study of Objective Marker of Adherence: Measuring Tenofovir in Urine by a Novel Point-of-Care Test Homaira Hanif presenting
2:35pm – 2:40pm	<b>1270</b> Optimizing Care for People on Antiretroviral Therapy: Development of a Target Product Profile for Point-of-Care HIV Viral Load Test Noel Kalanga presenting
2:40pm – 2:45pm	<b>1355</b> An Innovative Approach to Improving Viral Load Demand Creation and Testing Coverage in Health Facilities in the Western Region of Ghana Paul Yikpotey presenting
2:45pm – 2:50pm	<b>1177</b> Gaps in Reporting the 95-95-95 Targets in Cities Helen Omowumi Olowofeso presenting
2:50pm – 2:55pm	<b>1189</b> Increased Stress among Transgender and Non-Binary Individuals Decreased PrEP Intervention Engagement Dafna Paltin presenting



## MONITOR 10

TIME	ABSTRACT
2:00pm – 2:05pm	<b>1065</b> “I Felt that I Should Just Leave him and also Leave those Drugs”: Low HIV-risk Aligned Discontinuation among PrEP users within Public HIV Clinics in Kenya Kenneth Ngure presenting
2:05pm – 2:10pm	<b>1084</b> Factors Associated with PrEP Discontinuation in a US National Cohort Study of Sexual and Gender Minorities, 2017–2022 Yan Guo presenting
2:10pm – 2:15pm	<b>1238</b> High Willingness to Participate in Research of Long-Acting HIV Prevention Products during Pregnancy and Lactation in Kenya; A Qualitative Analysis Kenneth Ngure presenting
2:15pm – 2:20pm	<b>1257</b> Breaking Down Barriers to Pre-Exposure Prophylaxis: Global Analysis of Eligibility Criteria for HIV PrEP Amanda Banda presenting
2:20pm – 2:25pm	<b>1287</b> EPIC: Enhanced Peer Involvement in Care Vanessa Johnson presenting
2:25pm – 2:30pm	<b>1144</b> Utilization of Mobile Van to Impact of Quality of Medically Assisted Therapy (MAT) Services in Nairobi, Kenya Kiplagat Anthony presenting
2:30pm – 2:35pm	<b>1158</b> 3-Year Retention in Care and Viral Suppression among mHealth Platform Members with and without Documented Substance Use Karen Ingersoll presenting
2:35pm – 2:40pm	<b>1193</b> Utilizing Pharmacy Claims Data to Identify People with HIV at Risk of Antiretroviral Non-Adherence Andrea Perez presenting
2:40pm – 2:45pm	<b>1304</b> Digital Pill Systems to Enhance PrEP Adherence in Substance Users: A Preliminary Analysis of Adherence Conversions Post-Intervention Hannah Albrechta presenting
2:45pm – 2:50pm	<b>1351</b> End the Epidemic: Examining the Health Equity Implications of Health Systems, Policy, and Data Gaps for People Living with HIV in the Southern U.S. Jareese Lee presenting
2:50pm – 2:55pm	<b>1142</b> Applying the Observational-Implementation Hybrid Approach to Collect Implementation Data on Evidence-Based Practices to Support Drinking Reductions among Black Sexual Minority Men for Delivery in HIV Prevention and Care Settings Justin Knox presenting
2:55pm – 3:00pm	<b>1284</b> mHealth Tools for Youth Living with HIV in the Southern US: Opportunities for Adherence Support Sayward Harrison presenting



## MONITOR 11

TIME	ABSTRACT
2:00pm – 2:05pm	<b>1204</b> Implementing Rapid ART in Houston/Harris County: Baylor College of Medicine ECHO Facilitating Antiretroviral StART Earlier (BE FASTER) Community of Practice Naomi Sequeira presenting
2:05pm – 2:10pm	<b>1132</b> Same-Day Psychosocial Predictors of Antiretroviral Therapy Adherence among Young Latino Sexual Minority Men with HIV: An Ecological Momentary Assessment Study Diana Sheehan presenting
2:10pm – 2:15pm	<b>1330</b> Risk Factors for Early Nonadherence Identification and Successful Linkage to Support among Individuals Beginning ART In South Africa: Data from the Ongoing SUSTAIN (Supporting Sustained HIV Treatment Adherence after Initiation) Randomized Trial Lauren Jennings presenting
2:15pm – 2:20pm	<b>1335</b> Identifying Nonadherence and Improving Linkage to Support: Interim Progress from the SUSTAIN (Supporting Sustained HIV Treatment Adherence after Initiation) Study Lora Sabin presenting
2:20pm – 2:25pm	<b>1296</b> Prioritizing Mental Health in US Ending the HIV Epidemic Plans Christopher Duncombe presenting
2:25pm – 2:30pm	<b>1301</b> Measuring and Assessing PLHIV Perceptions of Quality of Care in Efforts to Achieve 95-95-95 in eThekweni Helen Omowumi Olowofeso presenting
2:30pm – 2:35pm	<b>1300</b> Assessing Perceived Quality of Care among PLHIV in Kyiv: Challenges with Interpersonal Communication and Experienced Stigma in Healthcare Settings Helen Omowumi Olowofeso presenting
2:35pm – 2:40pm	<b>1353</b> Psychosocial Impact of Long-Acting Injectable Antiretroviral Therapy in A Diverse Group of People Living with HIV in the United States Katerina Christopoulos presenting
2:40pm – 2:45pm	<b>1276</b> Engaging in HIV Care During the COVID-19 Pandemic: Perspectives of Black Men who have Sex with Men (BMSM) in the NNHIV Cohort Study Victoria Frye presenting
2:45pm – 2:50pm	<b>1015</b> A Community Health Worker Using Intensive Outreach is an Effective way to Improve Medication Adherence and Engage Women without Viral Suppression in Care Lauren Richey presenting
2:50pm – 2:55pm	<b>1148</b> The Complex Relationship between Stigma, Health Literacy, and Chronic Disease in People with HIV Lauren Richey presenting
2:55pm – 3:00pm	<b>1071</b> Willingness to Receive HIV Self-Testing Kits from Recent Sexual Partners among Men in Dar Es Salaam, Tanzania: Findings from the STEP Project Baseline Survey Kelia Olughu presenting



## MONITOR 12

TIME	ABSTRACT
2:00pm – 2:05pm	<b>1047</b> Pilot Test of Mopati, a Multi-level Adherence Intervention for People Living with HIV and their Treatment Partners in Botswana Laura Bogart presenting
2:05pm – 2:10pm	<b>1121</b> Experience with a Rapid Access Program and Telemedicine in San Juan, Puerto Rico Ruth Soto-Malave presenting
2:10pm – 2:15pm	<b>1134</b> HIV Risk Perception and PrEP Adherence among South African Women Planning for Pregnancy and Participating in STI Screening Oluwaseyi O. Isehunwa presenting
2:15pm – 2:20pm	<b>1210</b> Protecting Vulnerable Populations from COVID-19: Harnessing the HIV Program to Provide COVID-19 Vaccination to People Living with HIV in Zambia Adamson Ndhlovu presenting
2:20pm – 2:25pm	<b>1329</b> Utilization of Longitudinal Register to Strengthen Collaboration between OVC and Clinical Programs to Improve Health Outcomes for CALHIV in the OVC Program in Nairobi County, Kenya Leah Ng'ang'a presenting
2:30pm – 2:35pm	<b>1119</b> Optimizing ART Adherence of Young, Breastfeeding Mothers Living with HIV Naomi Reich presenting
2:35pm – 2:40pm	<b>1162</b> VLS Rates Maintained Due to COVID-19 Adaptation Steven Sawicki presenting
2:40pm – 2:45pm	<b>1344</b> A Mixed-Methods Exploration of Stigma and the Impact of COVID-19 on HIV Preventive Care among Young Sexual Minority Men Harsh Agarwal presenting
2:45pm – 2:50pm	<b>1273</b> Trends and Reasons for HIV Viremia in a Safety-Net HIV Clinic Over 11-Years Tyler Degener presenting
2:50pm – 2:55pm	<b>1019</b> Using Focus Groups to Inform the Development of a Social Media Campaign Promoting PrEP to Young Black and Latino Men who have Sex with Men Alan Chen presenting
2:55pm – 3:00pm	<b>1164</b> Formative Work to Customize a Mobile Health Platform to Meet the Needs of People with HIV Living in the District of Columbia Sylvia Caldwell presenting







# Adherence 2023

JUNE 11-13, 2023 • PUERTO RICO

The ***Adherence 2023*** conference is jointly provided by the **International Association of Providers of AIDS Care (IAPAC)** and the **Albert Einstein College of Medicine-Montefiore Medical Center**. We wish to acknowledge our institutional and commercial supporters, as well as the corporate sponsors, whose generosity is making this conference possible.

## Institutional Supporter

---



## Commercial Supporter

---

**Merck & Co.**

## Corporate Sponsors

---

**Gilead Sciences**

**ViiV Healthcare**