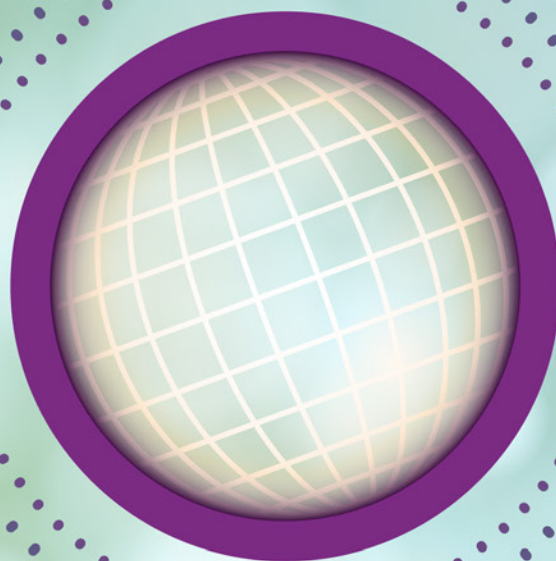


Program

17th International  
Conference on  
HIV TREATMENT  
AND PREVENTION  
ADHERENCE



#Adherence2022



# Adherence 2022

## Navigating the Future of HIV

NOVEMBER 7-9, 2022 • WASHINGTON, DC

Jointly provided by



Montefiore

This activity is supported by independent medical education grants from Gilead Sciences and Merck & Co., and a corporate sponsorship from ViiV Healthcare.



# Adherence 2022

NOVEMBER 7-9, 2022 • WASHINGTON, DC

## WELCOME FROM THE CO-CHAIRS

Welcome to **Adherence 2022**! This conference marks 17 years of coming together from around the world to share, support, and sustain scientific advances in improving adherence, by leveraging available social-behavioral and biomedical treatments to promote the health and well-being of people affected by and those living with HIV.

**Adherence 2022** takes place in Washington, DC, with an ancillary aim of providing critical input to US federal agencies striving to end the HIV epidemic in the United States, as well as US and global health agencies working towards the goal of controlling the HIV epidemic. As we continue to navigate the ongoing effects of COVID-19 and the pandemic, our plenaries, panels, oral abstracts, and posters continue to cover the full landscape of efforts to reach the Joint United Nations Programme on HIV/AIDS (UNAIDS) 95-95-95 targets and ending the HIV pandemic by 2030. We are honored to serve as Conference Scientific Co-Chairs and to play a role in what will undoubtedly be an energizing meeting of researchers, practitioners, advocates, and policy makers from around the world.

The Scientific Track Chairs for the conference are Jean B. Nachega (Stellenbosch University, Stellenbosch, South Africa) – Optimizing ART Adherence track; Faith Kiruthi (Nairobi City County Health Services, Nairobi, Kenya) – PrEP Uptake, Adherence, and Persistence; Aadia Rana (University of Alabama at Birmingham, Birmingham, AL, USA) and Dorina Onoya (University of the Witwatersrand, Johannesburg, South Africa) – HIV Care Continuum; Juliet Iwelunmor (Saint Louis University, St. Louis, MO, USA) – Implementation Science; and Erika Castellanos (GATE, Amsterdam, Netherlands) – Community Participatory Engagement track. We wish to express our gratitude to these six individuals who were critical to assembling a sound scientific program across the five tracks of our conference.

We also wish to thank the International Association of Providers of AIDS Care (IAPAC) for their continued support of this unique conference and commitment to strengthening our diverse network of individuals in this important field. This conference would not be possible without considerable contributions from IAPAC as well as from many individuals, including:

- Programmatic guidance from IAPAC President/CEO José M. Zuniga, who facilitated the creation of another year of high-quality plenaries.
- The ad-hoc reviewers who provided essential guidance in their careful scientific review of abstracts submitted to the conference.
- IAPAC's Senior Director of Education Jonathon Hess, and other staff whose work allows for the successful implementation of the conference.

We are also grateful for our distinguished conference faculty, including our Keynote speaker, Angeli Achrekar (Office of the Global AIDS Coordinator, Washington, DC, USA); our Gary S. Reiter & Andrew Kaplan Memorial lecturer, Sarah Henn (Whitman-Walker Health, Washington, DC, USA); and our Mario S. Cooper Memorial Colloquium speakers, Jesse Milan, Jr. (AIDS United, Washington, DC, USA) and Sbongile Nkosi (GNP+, Johannesburg, South Africa).

We hope that you fully partake of our next three days together. This year's conference is centered around our theme of "Navigating the Future of HIV" focusing on state-of-the-science evidence on best practices and key lessons learned in the field of HIV treatment and prevention adherence since **Adherence 2021**, and to provide a forum for discussions about practical, large-scale implementation of behavioral, clinical, structural, and other interventions to maximize the therapeutic and preventative effects of antiretroviral agents.



Jessica Haberer<sup>1</sup>  
Co-Chair



Jane M. Simoni<sup>2</sup>  
Co-Chair

<sup>1</sup> Massachusetts General Hospital, Boston, MA, USA

<sup>2</sup> University of Washington, Seattle, WA, USA



## TABLE OF CONTENTS

Schedule At-A-Glance .....	2
Information and Hotel Map .....	5
Accreditation Statements .....	6
Oral Abstracts Schedule .....	7
Faculty Roster .....	10
Acknowledgements .....	11
Abstract Review Committee .....	12





MONDAY, NOVEMBER 7, 2022

SCHEDULE AT-A-GLANCE

TIME	ACTIVITY
<b>OPENING SESSION • GRAND BALLROOM</b>	
1:00pm – 1:15pm	<b>WELCOME REMARKS: Welcome to Adherence 2022*</b> Jessica Haberer, Massachusetts General Hospital, Boston, MA, USA Jane M. Simoni, University of Washington, Seattle, WA, USA José M. Zuniga, IAPAC and Fast-Track Cities Institute, Tampa, FL, USA
1:15pm – 1:45pm	<b>KEYNOTE ADDRESS: Navigating the Future of HIV: The Role of Equity, Innovation, and Solidarity*</b> Angeli Achrekar, Office of the Global AIDS Coordinator, Washington, DC, USA
<b>HIV CARE CONTINUUM • GRAND BALLROOM</b>	
1:45pm – 3:00pm	<b>MODERATORS:</b> Dorina Onoya, University of the Witwatersrand, Johannesburg, South Africa Aadia Rana, University of Alabama at Birmingham, Birmingham, AL, USA  <b>Adopting Sustainable Innovations for Remote Access to HIV Care*</b> Denise Evans, University of the Witwatersrand, Johannesburg, South Africa  <b>Maintaining Continuity of COVID-19 Pandemic-Related HIV Services*</b> Wendy Armstrong, Emory University, Atlanta, GA, USA  <b>Telehealth Barriers: Overcoming Technology and Privacy Concerns*</b> Jamison Norwood, Vanderbilt University Medical Center, Nashville, TN, USA
<b>IMPLEMENTATION SCIENCE • GRAND BALLROOM</b>	
3:00pm – 4:15pm	<b>MODERATOR:</b> Juliet Iwelunmor, Saint Louis University, St. Louis, MO, USA  <b>Discontinuation, Suboptimal Adherence, and Re-Initiation of Oral HIV PrEP*</b> Weiming Tang, University of North Carolina at Chapel Hill, Chapel Hill, NC, USA  <b>Social and Physical Environmental Barriers of Long-Acting ARV Adherence*</b> Enbal Shacham, Saint Louis University, St. Louis, MO, USA  <b>PrEP4Youth: Using Crowdsourcing to Facilitate PrEP Implementation*</b> Titilola Gbaja-Biamila, Nigeria Institute of Medical Research, Lagos, Nigeria Ucheoma Nwazuru, Washington University in St. Louis, St. Louis, MO, USA
4:15pm – 4:30pm	Break
<b>TOP-RATED ABSTRACTS • GRAND BALLROOM</b>	
4:30pm – 5:30pm	<b>1056 - Preferences and Acceptability for Long-Acting PrEP Agents among Pregnant and Postpartum Women with Experience Using Daily Oral PrEP in South Africa and Kenya</b> Nafisa Wara  <b>1173 - Electronic Dose Monitoring Feedback (EMF) with Youth: Qualitative Exploration of Reactions to Viewing Their Dosing Calendars</b> Eamonn McGonigle  <b>1226 - Role of Visit Type in the HIV-Related No-Shows during the COVID-19 Pandemic: A Multisite Retrospective Cohort Study</b> Maira Sohail
5:30pm – 5:45pm	Break
<b>POSTER SESSION AND OPENING RECEPTION • EAST BALLROOM</b>	
5:45pm – 7:30pm	Welcome to Washington, DC!
7:30pm	Adjourn

\*Accredited sessions



## TUESDAY, NOVEMBER 8, 2022

TIME	ACTIVITY			
GARY S. REITER, MD, AND ANDREW KAPLAN, MD, MEMORIAL LECTURE • GRAND BALLROOM				
9:00am – 9:30am	Innovations in HIV: Applying Past Lessons to Accelerate Uptake of Novel ARVs* Sarah Henn, Whitman-Walker Health, Washington, DC, USA			
9:30am – 9:45am	Break			
OPTIMIZING ART ADHERENCE • GRAND BALLROOM				
9:45am – 11:00am	MODERATOR: Jean B. Nachega, Stellenbosch University, Stellenbosch, South Africa  Optimizing Early ART Uptake and Enhanced Adherence* Susan Graham, University of Washington, Seattle, WA, USA  Optimizing ART Adherence along the Continuum: Execution* John Kinuthia, Kenyatta National Hospital, Nairobi, Kenya  Facilitating Long-Term ART Adherence to Achieve Persistence* Jean B. Nachega, Stellenbosch University, Stellenbosch, South Africa			
11:00am – 11:15am	Break			
TIME	ACTIVITY	GRAND BALLROOM	CHINESE BALLROOM	EAST BALLROOM
11:15am – 12:30pm	Thematic Oral Abstract Sessions	mHealth and Telehealth Interventions	Adherence Monitoring	Implementation Science
12:30pm – 12:45pm	Break			
LUNCH SYMPOSIUM • GRAND BALLROOM				
12:45pm – 2:15pm	Implementing a Long-Acting Injectable in Your Practice: Considerations for Providers Sponsored by ViiV Healthcare			
TIME	ACTIVITY	CHINESE BALLROOM		EAST BALLROOM
2:15pm – 3:30pm	Thematic Oral Abstract Sessions	Mental Health and Substance Use		Optimizing Health Outcomes
3:30pm – 3:45pm	Break			
PrEP UPTAKE, ADHERENCE, AND PERSISTENCE • GRAND BALLROOM				
3:45pm – 5:00pm	MODERATOR: Faith Kiruthi, Nairobi City County Health Services, Nairobi, Kenya  Mitigating the Effects of Stigma on PrEP Uptake, Adherence, and Persistence* Nicasio Njagi Muriuki, Kamukunji Sub County, Nairobi, Kenya  Beyond Prevention: Integrating PrEP as a Whole-Person Healthcare Approach* Anthony Kiplagat, Nairobi Metropolitan Services, Nairobi, Kenya  Leveraging the Impacts of User-Centered Interventions for PrEP Optimization* Mercy Kamau, Jhpiego, Nairobi, Kenya			
5:00pm	Adjourn			

\*Accredited sessions



WEDNESDAY, NOVEMBER 9, 2022

SCHEDULE AT-A-GLANCE

TIME	ACTIVITY		
MARIO S. COOPER MEMORIAL COLLOQUIUM • GRAND BALLROOM			
9:00am – 10:00am	Unequal and Under Threat: A Call to Action Against Inequity in the HIV Response* Sbongile Nkosi, GNP+, Johannesburg, South Africa Jesse Milan, Jr., AIDS United, Washington, DC, USA		
COMMUNITY PARTICIPATORY ENGAGEMENT • GRAND BALLROOM			
10:00am – 11:15am	MODERATOR: Moderator: Erika Castellanos, Global Action for Trans Equality, Amsterdam, Netherlands  Promoting Choice in HIV Prevention: Pills, Rings, and Injectables* Maxi Jokonya, Y+ Global, Harare, Zimbabwe  Examining and Addressing HIV Dynamics in an Aging Population* Javier Hourcade Bellocq, Communities Delegation, Buenos Aires, Argentina  Defining ‘Communities’ in the Future of the Global HIV Response* Cleiton Euzebio de Lima, UNAIDS, Geneva, Switzerland		
11:15am – 11:30am	Break		
TIME	ACTIVITY	CHINESE BALLROOM	EAST BALLROOM
11:30am – 12:30pm	Thematic Oral Abstract Sessions	Community Participatory Engagement	Differentiated Service Delivery Models
LUNCH SYMPOSIUM • GRAND BALLROOM			
12:30pm – 2:00pm	North American Stigma and Discrimination Forum 2022 Sponsored by Virology Education		
2:00pm – 2:15pm	Break		
TIME	ACTIVITY	CHINESE BALLROOM	EAST BALLROOM
2:15pm – 3:15 pm	Thematic Oral Abstract Sessions	Children and Adolescents	PrEP Adherence
LATE BREAKER ABSTRACTS • GRAND BALLROOM			
3:15pm – 4:15pm	1229 - “PrEP My Way”: A Novel PrEP Delivery System to Meet the Needs of Young African Women Kevin Kamolloh  1247 - “Give Me the Kit”: Choice of Self-Collected Testing in TelePrEP Christopher Hall  1261 - HIV Epidemic Control Efforts and Resultant Key HIV Trends in Bangkok (2018-2020) Helen Olowofeso		
RAPPOREUR SESSION • GRAND BALLROOM			
4:15pm – 4:45pm	Highlights from Adherence 2022*		
CLOSING REMARKS • GRAND BALLROOM			
4:45pm – 5:00pm	Navigating the Future of HIV: What Have We Learned? What Can We Action?* Jessica Haberer, Massachusetts General Hospital, Boston, MA, USA Jane M. Simoni, University of Washington, Seattle, WA, USA		
5:00pm	Adjourn		

\*Accredited sessions



## CONFERENCE INFORMATION

### PROGRAM OVERVIEW

The **Adherence 2022** conference theme is “Navigating the Future of HIV,” reflecting the need to navigate a course towards regaining lost momentum across global, national, and municipal HIV responses by leveraging innovation. The conference is taking place in Washington, DC, USA, with an ancillary aim of providing critical input to US federal agencies striving to end the HIV epidemic in the United States, as well as US and global health agencies working towards the goal of controlling the HIV epidemic.

The conference will feature a Keynote Address, Memorial Lecture, Memorial Colloquium, five thematic sessions, six oral abstract sessions (including late-breakers), and an e-poster session. Additionally, a preconference session will focus on US Government engagement in the domestic and global AIDS responses.

### EDUCATIONAL OBJECTIVES

Upon successful completion of this activity, learners will be able to:

- Employ interventions to enhance linkage to and retention in and sustained engagement in HIV care
- Apply strategies to optimize antiretroviral therapy and pre-exposure prophylaxis adherence
- Utilize implementation science to inform evidence-based approaches to implement optimized HIV responses
- Integrate community participatory engagement into clinical practice to support patient-focused care environments

### OUTCOMES STATEMENT

This CME-/CE-accredited activity offers new and experienced healthcare providers state of the art education, recent data, and practical guidance on the optimal management of people living with and affected by HIV.

## GENERAL INFORMATION

### MEETING VENUE

The **Adherence 2022** conference is being held at the Mayflower Hotel. See the Schedule At-A-Glance on pages 2-4 and the hotel map below for the session room assignments and location.

### MEALS

Sponsored lunch symposia will be hosted on Tuesday, November 8, 2022, and Wednesday, November 9, 2022. Boxed lunches will be provided inside of the session room. Coffee breaks will be hosted on Tuesday, November 8, 2022, and Wednesday, November 9, 2022, from 8:30 - 9:00 AM in the foyer. Please refer to the program for the scheduled lunch symposia.

### INTERNET ACCESS

Wi-Fi at the conference is complimentary to attendees staying at the conference hotel and to all Marriott Bonvoy members. Signing up for Marriott Bonvoy is free and does not require a room reservation.

### SLIDE PRESENTATIONS/ABSTRACTS

Slide presentations will be available at [www.iapac.org](http://www.iapac.org) post-conference. The Program book will be distributed at registration. Electronic versions of the Oral Abstracts and Posters book 2022, available at [www.iapac.org](http://www.iapac.org).

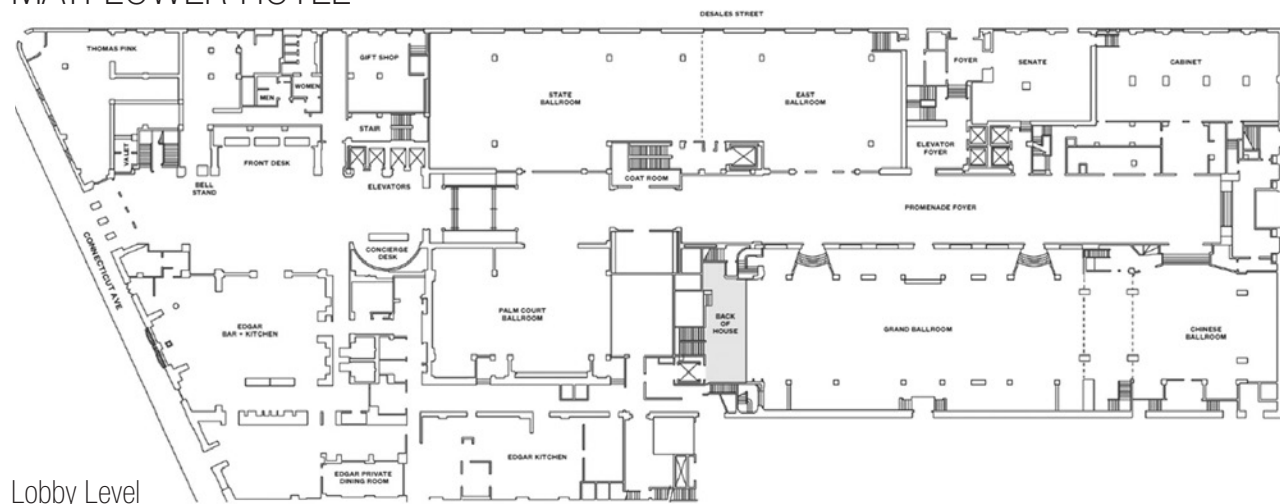
### SOCIAL MEDIA

Join the conference’s social media conversation: #Adherence2022

### QUESTIONS

If you have any questions during the conference, please locate an IAPAC staff member at the conference’s Registration Area. If you have any questions post-conference, please contact IAPAC’s Senior Program Manager, Cassandra Moore, at [cmoore@iapac.org](mailto:cmoore@iapac.org).

## MAYFLOWER HOTEL



Lobby Level



## HEALTHCARE TEAM

### ACCREDITATION STATEMENT

In support of improving patient care, this activity has been planned and implemented by Albert Einstein College of Medicine-Montefiore Medical Center and the International Association of Providers of AIDS Care. Albert Einstein College of Medicine-Montefiore Medical Center is jointly accredited by the Accreditation Council for Continuing Medical Education (ACCME), the Accreditation Council for Pharmacy Education (ACPE), and the American Nurses Credentialing Center (ANCC), to provide continuing education for the healthcare team.

This activity was planned by and for the healthcare team, and learners will receive 8.75 Interprofessional Continuing Education (IPCE) credits\* for learning and change.

\*For physicians, this is the number of *AMA PRA Category 1 Credit*™ awarded.

\*For non-physicians, this is the number of *AMA PRA Category 1 Credit*™ designated.



JOINTLY ACCREDITED PROVIDER™  
INTERPROFESSIONAL CONTINUING EDUCATION



IPCE CREDIT™

### CREDIT DESIGNATION STATEMENTS

#### PHYSICIANS

Albert Einstein College of Medicine-Montefiore Medical Center designates this live activity for a maximum of 8.75 *AMA PRA Category 1 Credits*™. Physicians should claim only credit commensurate with the extent of their participation in the activity.

#### NURSES

Albert Einstein College of Medicine-Montefiore Medical Center designates this activity for 8.75 nursing contact hours. Nurses should claim only credit commensurate with the extent of their participation in the activity.

#### PHARMACISTS

Albert Einstein College of Medicine-Montefiore Medical Center designates this continuing education activity for 8.75 contact hours (0.875 CEUs) of the Accreditation Council for Pharmacy Education. Universal Activity Number – **JA4008224-9999-22-044-L02-P**.

**Type of Activity:** Knowledge-based

After completion of the activity and submission of the activity evaluation form, transcript information will be sent to the NABP CPE Monitor Service within 60 days.



#### TARGET AUDIENCE

The target audience for the **Adherence 2022** conference includes physicians, nurses and nurse-practitioners, pharmacists, psychologists, behavioral scientists, social scientists, public health specialists, epidemiologists, social workers, case managers, peer educators and navigators, and community health workers working in the field of HIV medicine. Because the conference outcomes are intended to influence public policy around global, national, and municipal HIV responses, the conference may also be of interest to policymakers and individuals who wish to advocate as well as enact and implement evidence-informed HIV policies and interventions in their respective communities and countries.

All conflicts of interest of any individual(s) in a position to control the content of this CME activity will be identified and resolved prior to this educational activity being provided. Disclosure about provider and faculty relationships, or the lack thereof, will be provided to learners.

#### FINANCIAL DISCLOSURE STATEMENT

The “Policy on Identification, Mitigation and Disclosure of Relevant Financial Relationships” of Albert Einstein College of Medicine-Montefiore Medical Center requires that faculty participating in any CME/CE activity disclose to the audience any relevant relationships with an ineligible company or companies.

*\*Any presenter whose disclosed relationships prove to create a conflict of interest, with regard to his or her contribution to the activity, will not be permitted to present.*





TUESDAY, NOVEMBER 8, 2022

THEMATIC ORAL ABSTRACT SESSION 1 • 11:15am – 12:30pm

**mHealth and Telehealth Interventions**

Grand Ballroom

Moderator: Dashiell Q. Sears

**1082 Comparison of HIV-Related No-Show Rates by Visit Modality in the Early versus Late Phase of the COVID-19 Pandemic**  
Maira Sohail presenting

**1136 The Role of Patient Navigators and Mobile Health Units in Behavioral and Healthcare Services Delivery with Justice-Involvement Individuals**  
Jennifer Pankow presenting

**1161 Telemedicine Implementation at a Midwestern HIV Clinic: Strategy and Year 1 Outcomes**  
Nada Fadul presenting

**1183 Three-Year Follow-Up of PositiveLinks: Higher Use of mHealth Platform Associated with Sustained HIV Suppression**  
Catherine Bielick presenting

**Adherence Monitoring**

Chinese Ballroom

Moderator: Christopher Duncombe

**1024 Reasons for Late Antiretroviral Refill and Impact of Pharmacist Counseling on Antiretroviral Adherence: A Study Following the Early Warning Indicators of World Health Organization Recommendations**  
Preethi Raghavan presenting

**1043 Screening with Patient-Reported Outcomes (PRO) Assessments to Identify Risk Factors for Suboptimal Adherence in Routine HIV Care**  
Duncan Short presenting

**1078 Low Intra-Patient Variability in ARV Plasma Concentrations is Associated with Low Viral Load – Findings from a Longitudinal HIV Study with Ingestible Sensor Monitoring**  
Yan Wang presenting

**1097 Attitudes towards Participating in Digital Pill-Based Adherence Research for Oral Pre-Exposure Prophylaxis among Men who have Sex with Men with Substance Use**  
Georgia Goodman presenting

**1160 Implementing MedViewer for Daily Adherence Feedback: How Feasible and Acceptable Is Use of a Novel Hair-Based Antiretroviral Monitoring Tool in Busy Clinical Encounters?**  
Carol Golin presenting

**Implementation Science**

East Ballroom

Moderator: Sindhu Ravishankar

**1029 Prognostic Factors Influencing Survival among Infants Enrolled for Early Infant Diagnosis (EID) Services in Women of Low Socio-Economic Backgrounds in Nairobi, Kenya**  
Elizabeth Kiilu presenting

**1051 An Assessment of HIV Program Focusing on Viral Load Monitoring in Patients on Antiretroviral Therapy in Harare City, Zimbabwe, 2021**  
Talent Bvochora-Mudavanhu presenting

**1062 Client Preferences for HIV Care Coordination Program Features: Latent Class Analysis of a Discrete Choice Experiment**  
Madellena Conte presenting

**1141 A Global Scoping Review of the Factors Associated with HIV and Syphilis Co-Infection: Findings From 40 Countries**  
Alexander Ikanovic presenting

**1187 Barriers to Retaining Key Populations in Antiretroviral Treatment: Findings from an Implementation Science Study in Lusaka, Zambia**  
Maurice Musheke presenting

ORAL ABSTRACTS SCHEDULE



TUESDAY, NOVEMBER 8, 2022 (continued)

# ORAL ABSTRACTS SCHEDULE

## THEMATIC ORAL ABSTRACT SESSION 2 • 2:15pm – 3:30pm

### Mental Health and Substance Use

Chinese Ballroom  
Moderator: Drew Gibson

- 1016 Gender-Based Violence and Post-Traumatic Stress Disorder Symptoms Predict HIV Pre-Exposure Prophylaxis (PrEP) Uptake and Persistence Failure among Transgender and Non-Binary Persons Participating in PrEP Demonstration Project**  
Erik Storholm presenting
- 1036 Hazardous Drinking, Readiness to Change, and Alcohol-Related Self-Efficacy among People with HIV Receiving HIV Care in Kinshasa, the Democratic Republic of Congo**  
Angela Parcesepe presenting
- 1055 Results of a Community and Justice Needs Assessment for HIV Prevention and Treatment and Substance Use Treatment Services for Persons Involved in the Justice System**  
Angela Di Paola presenting
- 1092 Is Trauma Experience Associated with Poor Retention in HIV Care and Viral Suppression?**  
Bonnie Stedje presenting
- 1154 Amphetamine Use and its Associations with ART Adherence and Viral Load among Cisgender Sexual Minority Men Living With HIV**  
Natalie Brousseau presenting

### Optimizing Health Outcomes

East Ballroom  
Moderator: Helen Olowofeso

- 1013 Are HIV ART Adherence and Retention Rates Affected by Extreme Weather Events? Capacity Building for a Climate-Resilient Healthcare System**  
Daniel Samano presenting
- 1018 Understanding Disparities in Antiretroviral Therapy Adherence and Sustained Viral Suppression among Black, Hispanic/Latino, and White Men who have Sex with Men in the United States**  
Deesha Patel presenting
- 1122 DOTS PLUS: A Promising Approach to Increasing Adherence to Tuberculosis, Drug-Resistant Tuberculosis, and Antiretroviral HIV Treatment in Mozambique**  
Omar Abdula presenting
- 1166 Internalized HIV Stigma is Longitudinally Associated with Lower HIV Medication Adherence**  
Lydia Drumright presenting
- 1169 Rapid RestART: A Re-Linkage Program in the South**  
Katherine Conner presenting



WEDNESDAY, NOVEMBER 9, 2022 (continued)

### THEMATIC ORAL ABSTRACT SESSION 3 • 11:30am – 12:30pm

#### Community Participatory Engagement

Chinese Ballroom  
Moderator: Calvin Pugh

- 1033 High Incidence of COVID-19 Infection and Related Stigma among a Cohort of PWH in Washington, DC, USA**  
Shannon Barth presenting
- 1044 Increasing HIV Testing and Linkage to Care among People Experiencing Homelessness: A Community Engagement Project**  
David Batey presenting
- 1081 Rural-Urban Disparities in Stage 3 HIV (AIDS) Diagnoses in Tennessee: A Guide for Targeted HIV Screening Interventions**  
Kevin M. Gibas presenting
- 1087 Sustaining Access to HIV and SHRH Services for KPs during COVID 19 – A Collaboration between Wilkins Infectious Diseases Hospital and GALZ, Harare, 2022**  
Talent Bvochora-Mudavanhu presenting

#### Differentiated Service Delivery Models

East Ballroom  
Moderator: Amanda Castel

- 1110 The Impact of Differentiated Service Delivery Models of HIV Treatment on 12-Months Retention in Antiretroviral Therapy for Patients Enrolled in HIV Care in Mozambique**  
Dorlim M. Uetela presenting
- 1112 Fidelity of Implementation of Differentiated Service Delivery Models for HIV Treatment in Mozambique in 2021**  
Dorlim M. Uetela presenting
- 1125 Do Differentiated Service Delivery Models Work for Second-Line Therapy? Outcomes for South African Second-Line ART Clients Enrolled in DSD Models Compared to Conventional Care**  
Amy Huber presenting

### THEMATIC ORAL ABSTRACT SESSION 4 • 2:15pm – 3:15pm

#### Children and Adolescents

Chinese Ballroom • Moderator: Christopher Duncombe

- 1026 Facilitators and Barriers to the Delivery of Dispensing Messages to Caregivers of Children Living with HIV at Four HIV Care Centers in Kampala: A Qualitative Study**  
Eleanor Magongo presenting
- 1074 Young Adult Perspectives on Sex, Dating, and PrEP Use during the COVID-19 Pandemic and Improving the Future of PrEP Care**  
Christina Camp presenting
- 1090 Navigating Barriers to Pediatric Viral Load Suppression in Rural Zambia**  
Adam Zulu presenting
- 1148 HIV Testing Drive among Out of School Youth in Blue Collar Communities**  
Ramon Olanrewaju Babamole presenting

#### PrEP Adherence

East Ballroom • Moderator: Moisés Agosto-Rosario

- 1099 Supporting the ART: Medication Adherence Patterns in Persons Prescribed Ingestible Sensor-Enabled Oral Pre-Exposure Prophylaxis (PrEP) to Prevent HIV Infection**  
Sara Browne presenting
- 1117 Prevention-Effective Adherence to Oral PrEP among Pregnant and Postpartum Women in South Africa**  
Dvora J. Davey presenting
- 1128 Acceptability of a Differentiated Package of Oral PrEP Adherence Interventions among Adolescent Girls and Young Women in South Africa: Results from the PrEP SMART Trial**  
Nomhle Khoza presenting
- 1147 Performance and Acceptability of a Urine Point-of-Care Test for Drug-Level Feedback Counselling on PrEP Use among Young Women in South Africa**  
Nicole Poovan presenting

ORAL ABSTRACTS SCHEDULE



# FACULTY ROSTER

**Angeli Achrekar**

Office of the Global AIDS Coordinator  
Washington, DC, USA

**Moisés Agosto-Rosario**

National Minority AIDS Council  
Washington, DC, USA

**Kiplagat Anthony**

Nairobi City County Health Services  
Nairobi, Kenya

**Wendy Armstrong**

Emory University  
Atlanta, GA, USA

**Amanda Castel**

George Washington University  
Washington, DC, USA

**Erika Castellanos**

GATE  
Amsterdam, Netherlands

**Christopher Duncombe**

IAPAC  
Seattle, WA, USA

**Cleitton Euzebio de Lima**

UNAIDS  
Geneva, Switzerland

**Denise Evans**

Wits Health Consortium  
Johannesburg, South Africa

**Titilola Gbaja-Biamila**

Nigeria Institute of Medical Research  
Lagos, Nigeria

**Drew Gibson**

AIDS United  
Washington, DC, USA

**Susan Graham**

University of Washington  
Seattle, WA, USA

**Jessica Haberer**

Massachusetts General Hospital  
Boston, MA, USA

**Sarah Henn**

Whitman-Walker Health  
Washington, DC, USA

**Javier Hourcade Bellocq**

Communities Delegation  
Buenos Aires, Argentina

**Juliet Iwelunmor**

Saint Louis University  
St. Louis, MO, USA

**Maximina Jokonya**

Y+ Global  
Mutare, Zimbabwe

**Mercy Kamau**

Jhpiego  
Nairobi, Kenya

**John Kinuthia**

Kenyatta National Hospital  
Nairobi, Kenya

**Faith Kiruthi**

Nairobi Metropolitan Service  
Nairobi, Kenya

**Jesse Milan, Jr.**

AIDS United  
Washington, DC, USA

**Nicasio Njagi Muriuki**

Kamukunji Sub County  
Nairobi, Kenya

**Jean B. Nachega**

Stellenbosch University  
Stellenbosch, South Africa

**Sbongile Nkosi**

GNP+  
Johannesburg, South Africa

**Jamison Norwood**

Vanderbilt University Medical Center  
Nashville, TN, USA

**Helen Olowofeso**

Fast-Track Cities Institute  
Lagos, Nigeria

**Dorina Onoya**

Wits Health Consortium  
Johannesburg, South Africa

**Kalvin Pugh**

IAPAC  
Kansas City, KS, USA

**Aadia Rana**

University of Alabama at Birmingham  
Birmingham, AL, USA

**Dashiell Q. Sears**

Fast-Track Cities Institute  
Washington, DC, USA

**Sindhu Ravishankar**

Fast-Track Cities Institute  
Washington, DC, USA

**Enbal Shacham**

Saint Louis University  
St. Louis, MO, USA

**Jane M. Simoni**

University of Washington  
Seattle, WA, USA

**Weiming Tang**

University of North Carolina at Chapel Hill  
Chapel Hill, NC, USA

**José M. Zuniga**

IAPAC and Fast-Track Cities Institute  
Tampa, FL, USA



# ACKNOWLEDGEMENTS

## CO-CHAIRS

---

**Jessica Haberer**  
Massachusetts General Hospital  
Boston, MA, USA

**Jane M. Simoni**  
University of Washington  
Seattle, WA, USA

## PLANNING COMMITTEE

---

**Erika Castellanos**  
GATE  
Amsterdam, Netherlands

**Juliet Iwelunmor**  
Saint Louis University  
St. Louis, MO, USA

**Faith Kiruthi**  
Nairobi City County Health Services  
Nairobi, Kenya

**Jean B. Nachega**  
Stellenbosch University  
Stellenbosch, South Africa

**Dorina Onoya**  
University of the Witwatersrand  
Johannesburg, South Africa

**Aadia Rana**  
University of Alabama at Birmingham  
Birmingham, AL, USA

**José M. Zuniga**  
IAPAC and Fast-Track Cities Institute  
Tampa, FL, USA

## CONTENT REVIEWERS

---

**Victor B. Hatcher**  
Albert Einstein College of Medicine  
New York, NY, USA

**Kathleen O'Connor**  
Montefiore Medical Center  
New York, NY, USA

**Mark J. Sinnet**  
Montefiore Medical Center  
New York, NY, USA





## ABSTRACT REVIEW COMMITTEE

**K. Rivet Amico**  
University of Michigan  
Ann Arbor, MI, USA

**Sarah K. Calabrese**  
George Washington University  
Washington, DC, USA

**Amanda Castel**  
George Washington University  
Washington, DC, USA

**Erika Castellanos**  
GATE  
Amsterdam, Netherlands

**Delivette Castor**  
Columbia Public Health  
New York, NY, USA

**Jennifer Cocohoba**  
University of California San Francisco  
San Francisco, CA, USA

**Heidi Crane**  
University of Washington  
Seattle, WA, USA

**Christopher Duncombe**  
IAPAC  
Seattle, WA, USA

**Edward Gardner**  
Denver Public Health  
Denver, CO, USA

**Thomas Giordano**  
Baylor College of Medicine  
Houston, TX, USA

**Christopher Gordon**  
NIMH  
Bethesda, MD, USA

**Susan Graham**  
University of Washington  
Seattle, WA, USA

**Anna Grimsrud**  
IAS  
Cape Town, South Africa

**Jessica Haberer**  
Massachusetts General Hospital  
Boston, MA, USA

**Ian Hodgson**  
European HIV Nursing Network  
Leeds, England, UK

**Juliet Iwelunmor**  
Saint Louis University  
St. Louis, MO, USA

**Faith Kiruthi**  
Nairobi City County Health Services  
Nairobi, Kenya

**Douglas Krakower**  
Beth Israel Deaconess  
Plymouth, MA, USA

**Saiqa Mullick**  
Wits RHI  
Johannesburg, South Africa

**Dorina Onoya**  
University of the Witwatersrand  
Johannesburg, South Africa

**Catherine Orrell**  
Desmond Tutu HIV Centre  
Cape Town, South Africa

**Jean-Jacques Parienti**  
CHU Caen  
Caen, France

**Corey Prachniack-Rincón**  
IAPAC  
Boston, MA, USA

**Kalvin Pugh**  
IAPAC  
Kansas City, KA, USA

**Aadia Rana**  
University of Alabama at Birmingham  
Birmingham, AL, USA

**Sheree Schwartz**  
Johns Hopkins University  
Baltimore, MD, USA

**Elizabeth Sherman**  
Nova Southeastern University  
Fort Lauderdale, FL, USA

**Kenneth Sherr**  
University of Washington  
Seattle, WA, USA

**Jane M. Simoni**  
University of Washington  
Seattle, WA, USA

**Bruno Spire**  
INSERM Marseille  
Marseille, France

**Michael Stirratt**  
NIMH  
Bethesda, MD, USA

**Lynne Wilkinson**  
IAS  
Cape Town, South Africa

**Ira Wilson**  
Brown University  
Providence, RI, USA

**Tingting Zhang**  
Brown University  
Providence, RI, USA

**Carmen Zorrilla**  
University of Puerto Rico  
San Juan, Puerto Rico





# Adherence 2023

JUNE 11-13, 2023 • SAN JUAN, PUERTO RICO

Sponsored by







# Adherence 2022

NOVEMBER 7-9, 2022 • WASHINGTON, DC

The **Adherence 2022** conference is jointly provided by the **International Association of Providers of AIDS Care (IAPAC)** and the **Albert Einstein College of Medicine-Montefiore Medical Center**. We wish to express our deepest gratitude to the institutional and commercial supporters, as well as the corporate sponsor, whose generosity is making this conference possible.

## Institutional Supporter

---



## Commercial Supporters

---

**Gilead Sciences**

**Merck & Co.**

## Corporate Sponsor

---

**ViiV Healthcare**

[www.iapac.org](http://www.iapac.org)