

VIRTUAL

FAST-TRACK CITIES 2020

September 9-10, 2020

SPONSORED BY:



IN PARTNERSHIP WITH:



Case studies: London

10 September 2020

VIRTUAL

FAST-TRACK CITIES 2020

September 9 - 10, 2020

Kat Smithson

National AIDS Trust (UK)

NGO representative on London Fast Track
Cities Leadership Group

SPONSORED BY:



IN PARTNERSHIP WITH:



System disruption

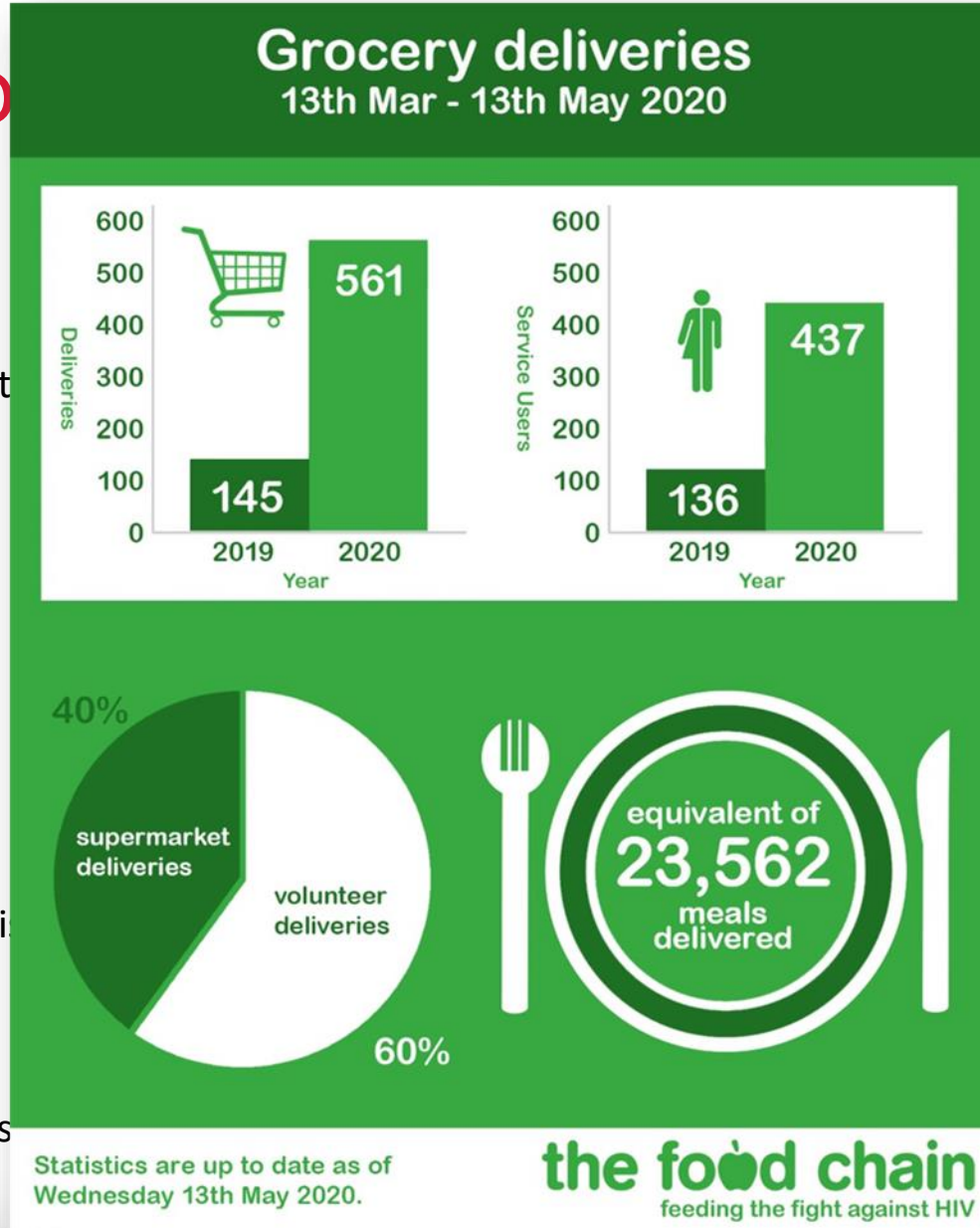
CHANGE

RESOURCES

- Government funding uncertain/re-direct
- Funding skewed towards immediate COVID response
- Impact on Trust and Foundation income
- Impact on fundraising opportunities
- Staff furlough scheme
- Redundancies

NEEDS

- Hardship – food and other basic needs
- Digital access
- Information – shielding/ rights/ health risks
- Loneliness and isolation
- Anxiety
- Bereavement
- Limited access to testing and SH services
- New forms of stigma



perspective

INSE

TEST NOW BEFORE LOCKDOWN ENDS.

KNOW YOUR STATUS BEFORE YOU START HOOKING UP. LET'S BEAT HIV FOR GOOD.

#TIMETOTEST

- #clinicalservices - Joined - 110 members
- #employment - Joined - 29 members - Discussion and resource
- #financeandbenefits - Joined - 110 members - To discuss the financial
- #foodsecurity - Joined - 33 members - Discussion and resource
- #general - Joined - 110 members - This channel is for work
- #harmreduction - Joined - 110 members

Learning from a crisis

- **Resilience and agility of the system is strengthened by networks. Leadership has a role in promoting these networks**

The impossible becomes possible...

- Online consultations
- Testing in Emergency Departments
- Reaching new populations and those lost to contact through temporary housing – opportunities to re-engage people in drug treatment and HIV treatment services.

But barriers still emerge – leadership has a further fire-fighting and problem-fixing role

- Nervousness about testing
- Initiatives starting up without consulting all stakeholders (e.g. testing; ‘shielding’ advice)

- **COVID-19 has exacerbated existing inequalities that were linked to HIV in London**

We knew there were those who were ‘doing less well’ – the size of this group has grown.

Sophia Forum – 45% Women living with HIV reporting mental health as primary concern.

Positively UK - 18% of service users said lockdown affected treatment adherence.

- **We can’t just pick up where we left off**

It’s not over and phases are complex.

Crisis working is not sustainable and crisis funding often doesn’t deal with longer term impact on demand.

London FTCl leadership group priorities

The impact on the **system** and on **people and communities** affected by HIV must be evaluated on an ongoing basis.

We may need to **re-prioritise** or **re-distribute between** priorities.

Key issues:

- Mental health needs – already significant issues with services pre-COVID-19
- Digital access
- Food poverty
- Homelessness and housing issues
- Access to testing and other treatment and prevention services

Contact me...

Kat.Smithson@nat.org.uk

www.nat.org.uk

Information resources mentioned in this presentation:

<https://prepster.info/covid/>

<https://www.tht.org.uk/>

<https://www.hiv.scot/Pages/FAQs/Category/hiv-coronavirus>

<https://www.bhiva.org/Coronavirus-COVID-19>

<https://www.nat.org.uk/coronavirus-hiv>

<https://www.foodchain.org.uk/>

<https://www.hivpreventionengland.org.uk/2020/06/09/time-to-test-campaign/>