



**FAST TRACK CITIES CONFERENCE
JOHANNESBURG
Councillor Geofrey Makhubo**



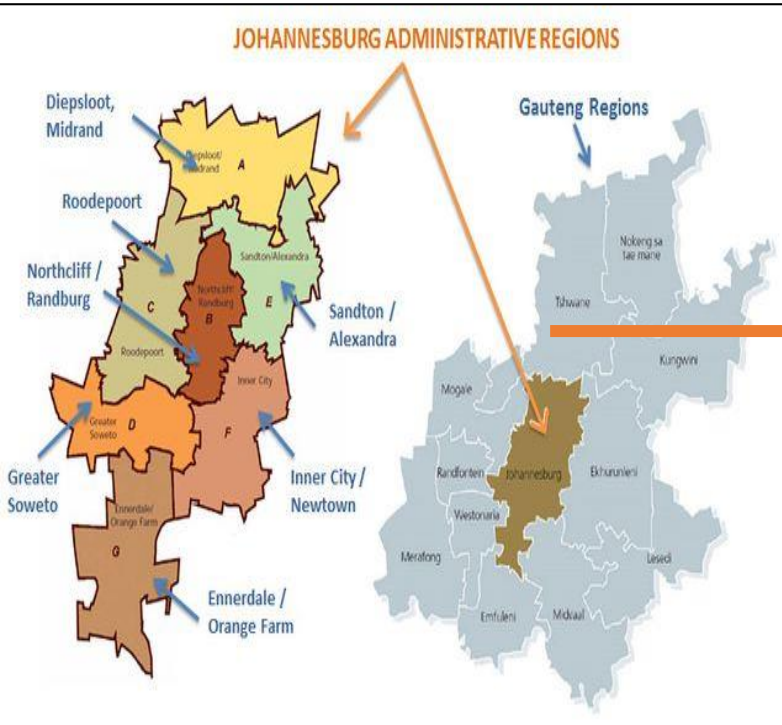
a world class African city



Johannesburg's location

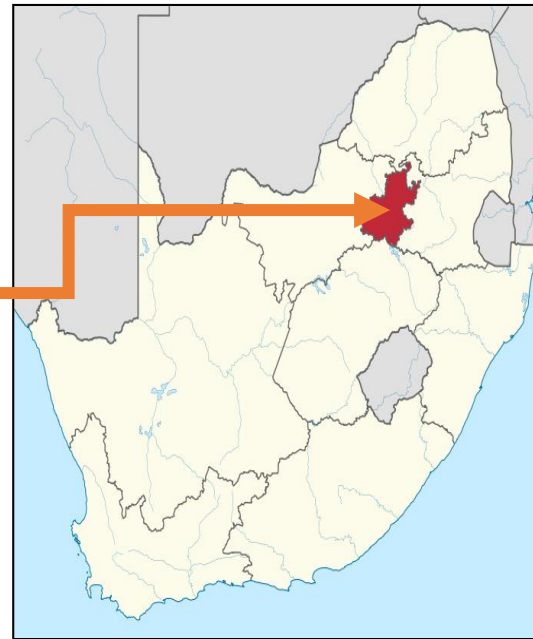
Joburg

a world class African city



JOHANNESBURG

GAUTENG PROVINCE



SOUTH AFRICA



AFRICA

DEMOGRAPHIC INFORMATION

POPULATION
5.74 MILLION
PEOPLE



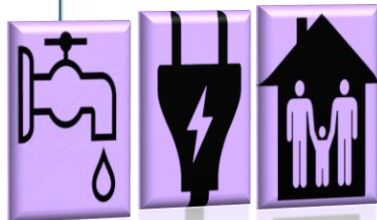
YOUTH
UNEMPLOYMENT
RATE = 41.2%



UNEMPLOYMENT
RATE (Official)
= 32.7%



GVA GROWTH
(Average annual
growth) 1.4%



% ACCESS TO BASIC
SERVICES

Households: 1.8
million

Dwelling = 75.1%

Refuse = 92.9%

Water = 98.8%

Sanitation = 96.4%

Electricity = 92.3%



HUMAN
DEVELOPMENT INDEX

0.72



POVERTY RATE
45.84%



GINI COEFFICIENT 0.62



WATER QUALITY

Blue Drop index = 95%



QUALITY OF LIFE:

QoL Index

= 6.30



CUSTOMER
SATISFACTION
INDEX

73 Points



INFORMAL
SETTLEMENTS
= 211



COJ's Strategic Overview

VISION

Johannesburg – a World Class African City of the Future – a vibrant, equitable African city, strengthened through its diversity; a city that provides real quality of life; a city that provides sustainability for all its citizens; a resilient and adaptive society. Joburg. My City – Our Future!

MISSION

The City of Johannesburg commits itself to pro-active delivery and the creation of a city environment in 2040 that is resilient, sustainable and liveable. It aims to achieve this through long-term 2040 plans, targeted programmes, services and enabling support that drives economic growth, optimal management of natural resources and the environment, the development of society and the individuals within it, and the practice and encouragement of sound governance, in all the City does.

LONG TERM PLANNING

Growth and Development Strategy

4 Outcomes

- 1: Improved quality of life and development-driven resilience for all.
- 2: Provide a resilient, liveable, sustainable urban environment – underpinned by smart infrastructure supportive of a low carbon economy
- 3: An inclusive, job-intensive, resilient, competitive and smart economy that harnesses the potential of citizens
- 4: A high performing metropolitan government that proactively contributes to and builds a sustainable, socially inclusive, locally integrated and globally competitive Gauteng City Region

MEDIUM TERM PLANNING

Integrated Development Plan

10 Strategic Priorities

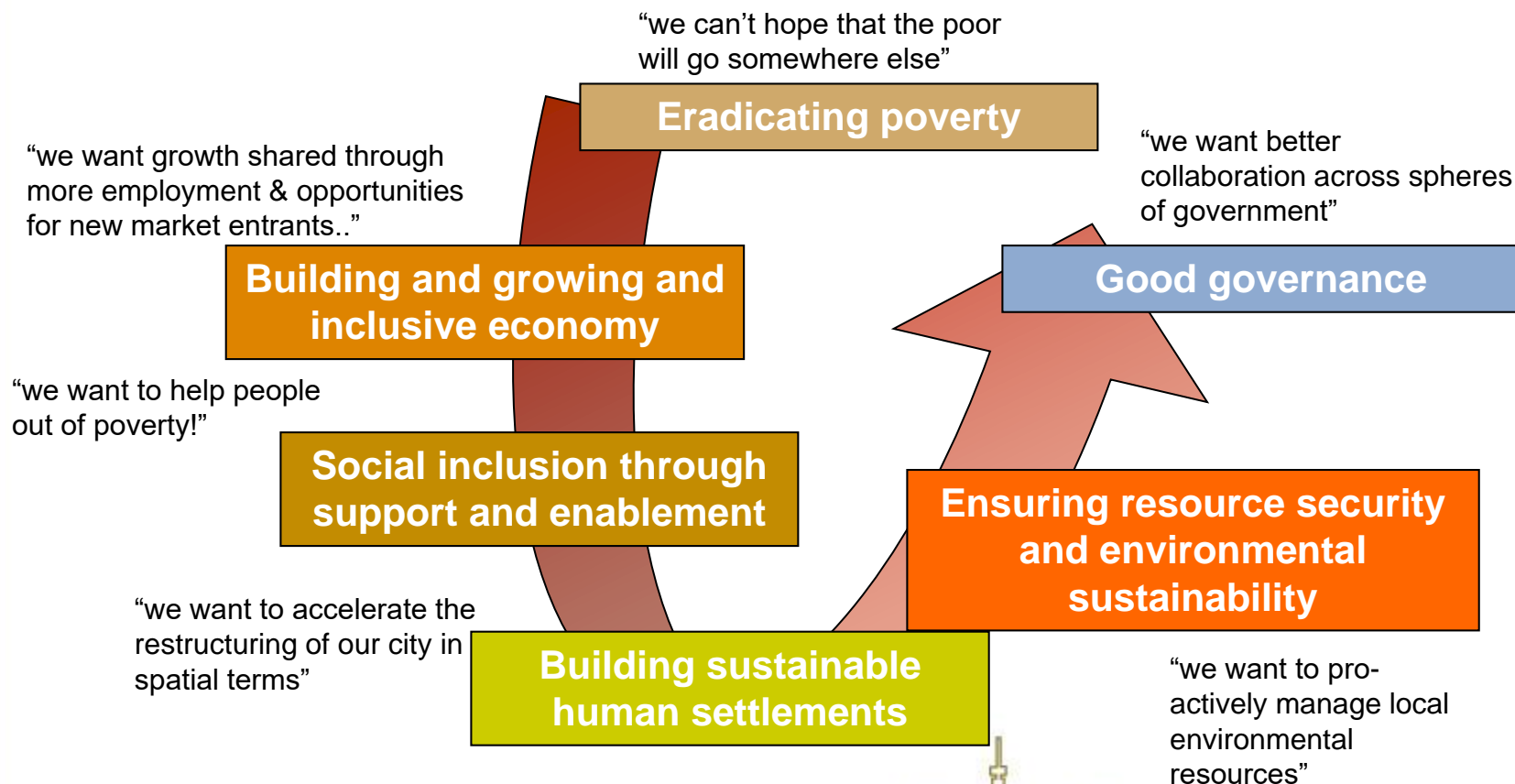
1. Good Governance
2. Financial Sustainability.
3. Integrated Human Settlements.
4. Sustainable Service Delivery.
5. Job Opportunity and Creation.
6. Safer City.
7. Active and Engaged Citizenry.
8. Economic development
9. Sustainable environmental development
10. Smart City

13 Strategic Programmes

1. Accelerated and visible Service delivery and re-introduction of co-production in the delivery of the basic service
2. Improve and strengthen financial position
3. impact the housing market including the integration; development and maintenance of hostels and flats
4. A safer city by reintroducing ward based policing (Joburg 10+) and effective law enforcement
5. Job opportunities and creation
6. Development and support of SMMEs
7. Community Based Planning and enhanced community engagement including mayoral izimbizo
8. Manage displaced communities and homelessness
9. Combating drug and substance abuse
10. Combat corruption; fraud and maladministration
11. Combat illegal land invasion and promote regulated land use
12. Formalization of informal settlements and accelerated rapid land release
13. Combat gender based violence

The GDS principles

- The GDS is underpinned by six principles derived from the development paradigm and affirm the City's commitment to the objects and duties of local government outlined in the Constitution.



COVID-19 STATISTICS IN RSA

08-09-2020

Confirmed cases: 640 441

Tests conducted: 3 821 162

Deaths: 15 086

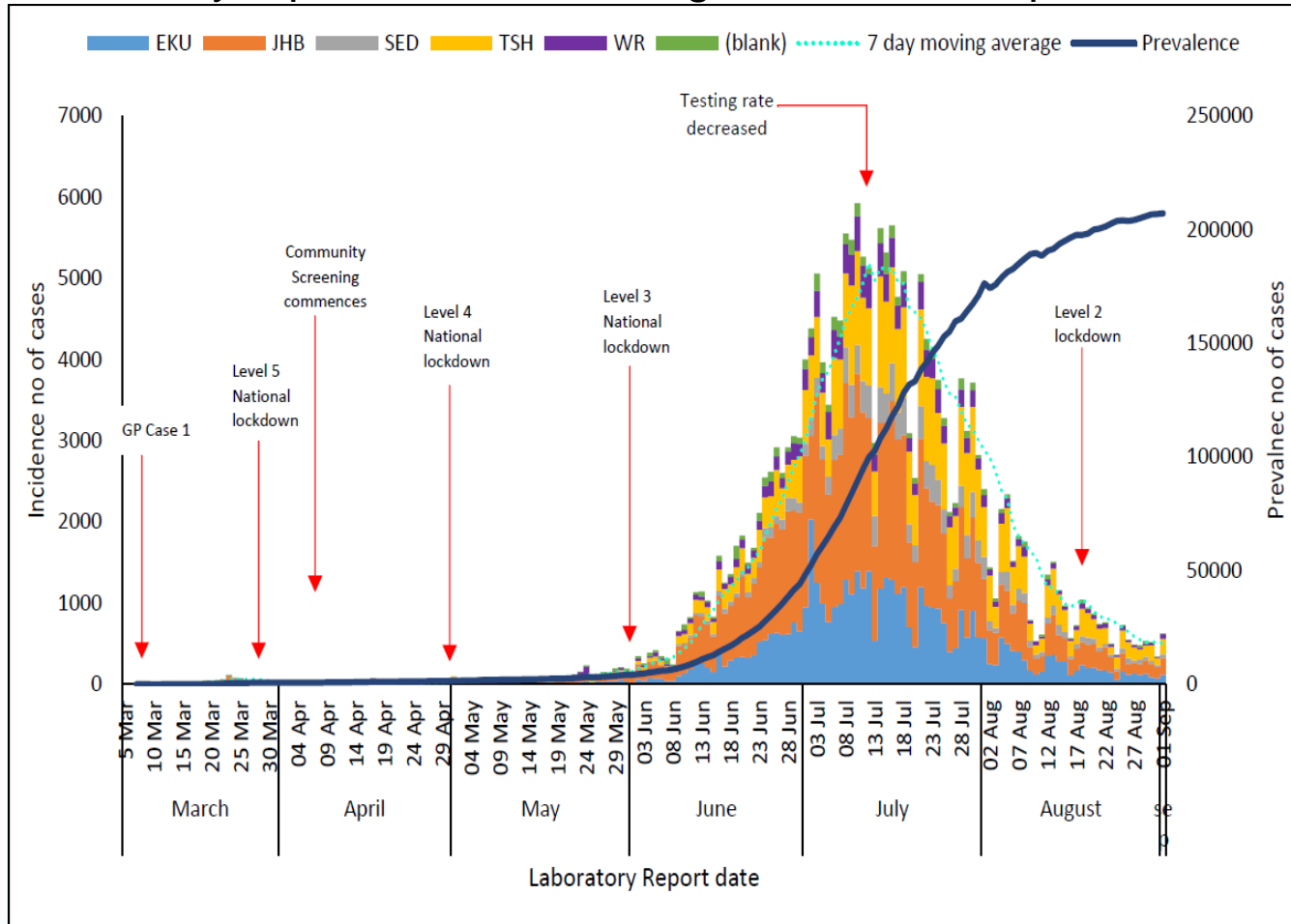
Recoveries: 567 729

Province	Deaths	Recoveries
Eastern Cape	3 007	82 842
Free State	798	27 129
Gauteng	3 833	188 367
KwaZulu-Natal	2 346	102 474
Limpopo	257	12 952
Mpumalanga	416	23 917
North West	285	21 530
Northern Cape	150	8 956
Western Cape	3 994	99 562



COVID 19 Gauteng Province

Incidence and prevalence of laboratory-confirmed COVID-19 cases by laboratory report date in Gauteng, 5 March- 1 September 2020



District	Cumulative number of cases (1st Sept 2020)
Ekurhuleni	84,800
Johannesburg	47,502
Sedibeng	45,684
Tswane	14,290
West Rand	13,540
Unallocated	4,702
Total	210,518



6 PILLARS OF RESPONSE OF COVID-19 PANDEMIC IN JOHANNESBURG

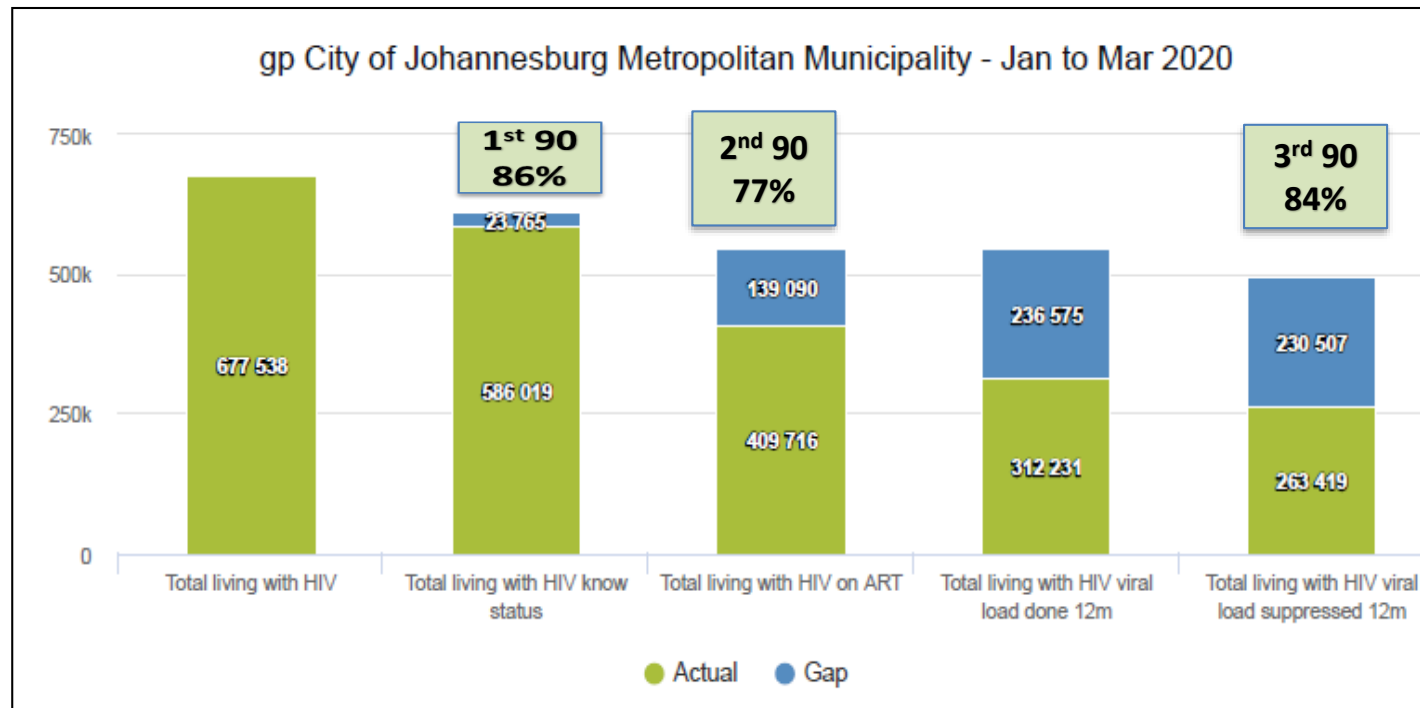


PARIS DECLARATION 2014



- **August 2014** – Fast-Track Cities partnership conceptualized between UNAIDS, IAPAC, UN-Habitat & City of Paris
- **December 2014** – Fast-Track Cities initiative launched in the City of Paris, together with the *Paris Declaration on Fast-Track Cities Ending the AIDS Epidemic*
- **Johannesburg**, as part of the Fast-Track cities network, with the core partners of UNAIDS to deliver on the commitments of the “Paris Declaration on Ending AIDS in Cities by 2030” and to address disparities in access to basic health and social services, social justice and economic opportunities which was signed at the South African Fast-Track Cities Meeting: **Durban, 17 March 2016.**

City of Johannesburg 90-90-90 Cascade



Estimated Person living with HIV 677 538;

1st 90 : PLHIV Know status 586 019 (86%)

2nd 90: PLHIV on ART: 409 716 (77%) (Target 20/21: 560 405)

3rd 90 : Viral Load suppressed @ 12 months: 263 419 (84%)

Source: Web DHIS F2019/20 quarter ending [Jan-Mar 20]



A promising
future



a world class African city

END

