

The impact of waiting for PrEP:
Seroconversions, STIs and pressure on
clinics

Dr Sally Jewsbury

LONDON

FAST-TRACK CITIES 2019

SEPTEMBER 8-11, 2019 | BARBICAN CENTRE

SPONSORED BY:



IN PARTNERSHIP WITH:



Acknowledgements

Dr Anna Garner, Michael Redmond, Dr Cara Saxon, Dr SiewYan Teo, Dr Chris Ward
and Dr Orla McQuillan

Introduction

PrEP access is a postcode lottery in the UK



Introduction

Contraception, Sexual health and HIV
Service: 5 clinics

High proportion of MSM attendances

Nov 2017 started spreadsheet for
patients awaiting PrEP trials

Trial recruitment: 1 phone call and 1 text



Aims

Review HIV & STI acquisition

Quantify attendances

Predict the impact of future NHS PrEP
on services



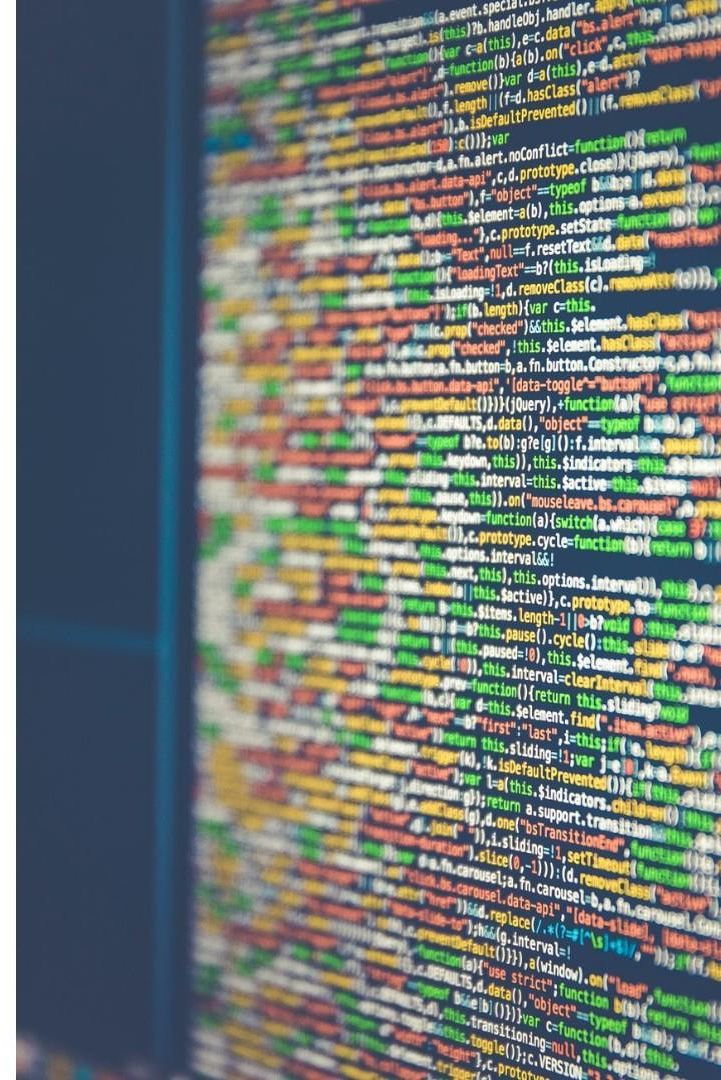
Methods

Retrospective search on list Nov 2017 to Feb 2019

Demographics

STIs and HIV diagnoses

Attendances



Results

700 on list

Male: 654 (93.4%)

Female: 6 (0.9%)

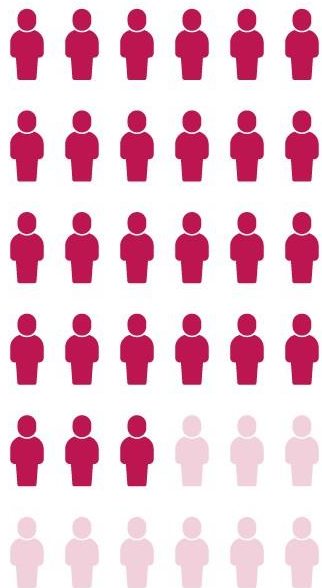
Unknown: 40 (5.7%)

Mean age 31 (range 17 - 69)



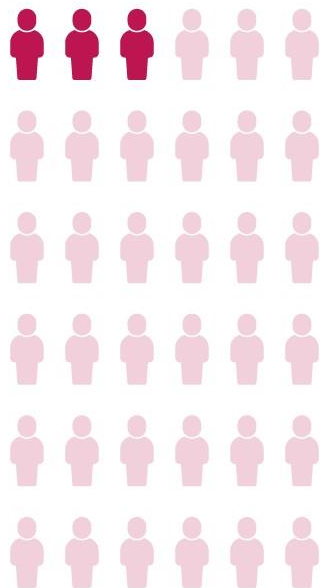
Results

75%



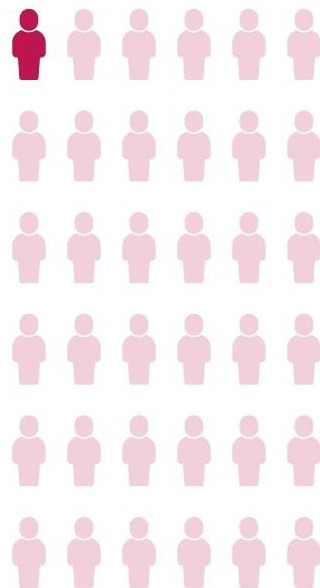
Homosexual

8%



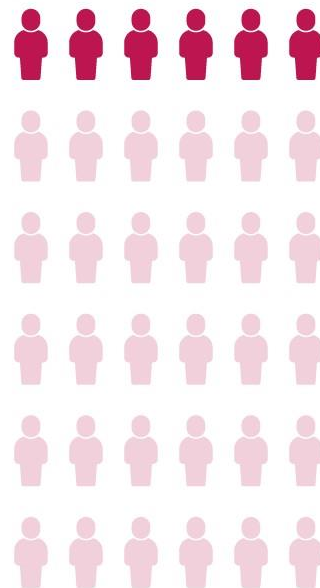
Bisexual

2%



Heterosexual

15%



Unknown

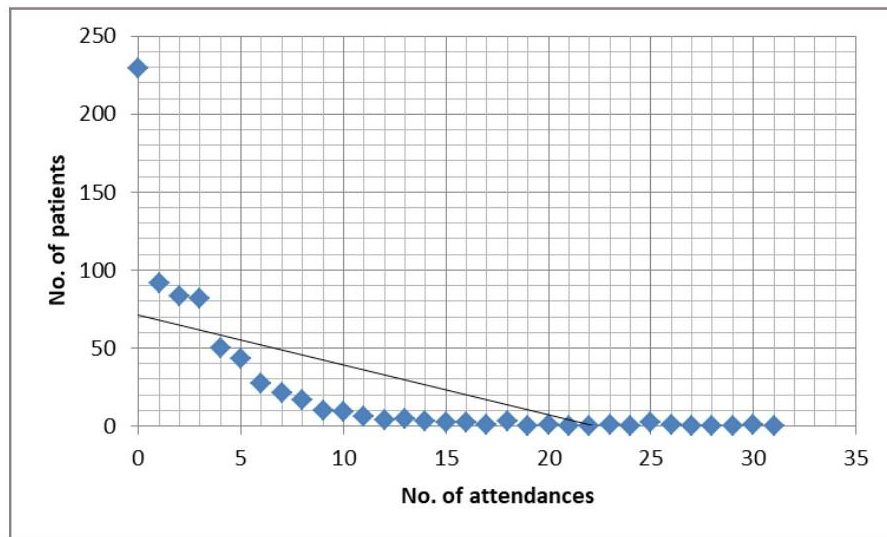
Results

Total attendances 4303

Mean attendance 4.5
(range 0-31)

229(32.7%) did not attend
at all after being listed

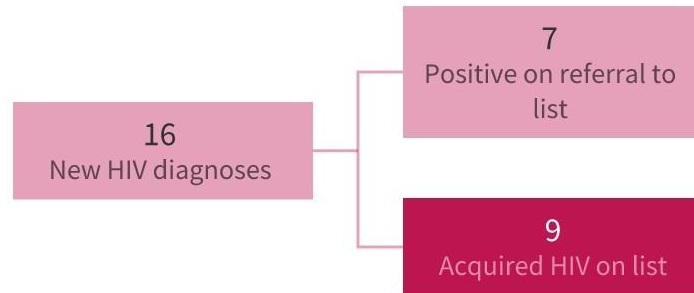
486(69.4%) attended <4
times



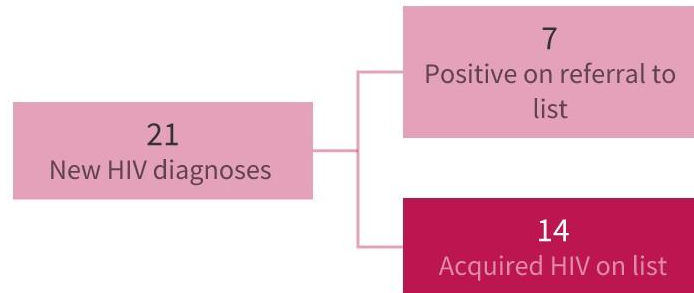
Results

STI	Frequency	Notes
Chlamydia	36 (in 32 patients)	26 rectal
Gonorrhoea	63 (in 56 patients)	33 rectal
NGU	13	
Syphilis	7	
Hepatitis C	1	

Results



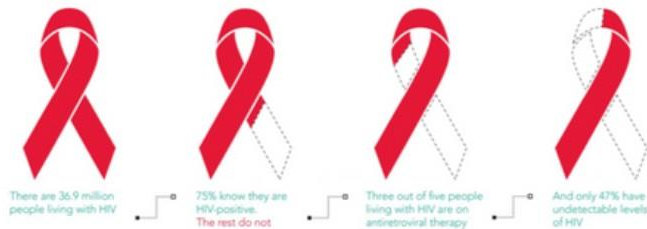
Results



Results

Some good news!

90-90-90: Treatment for all



100% engaged in care

100% on treatment

55% VL < 50

Discussion



14 Preventable HIV
diagnoses



1/3 never returned



Wider PrEP
provision may
encourage
attendance



Anticipate
significant pressure
and cost

Discussion



Clinic Reflection

NOW!

Immediate roll out of
PrEP from NHS England



Must factor in additional
resources required