



90-90-90 Targets Update

July 21, 2019 • Mexico City

SPONSORED BY:



IN PARTNERSHIP WITH:



Progress towards the 90-90-90 Target in China

Zunyou Wu
China CDC

90-90-90 Targets Update

July 21, 2019 • Mexico City

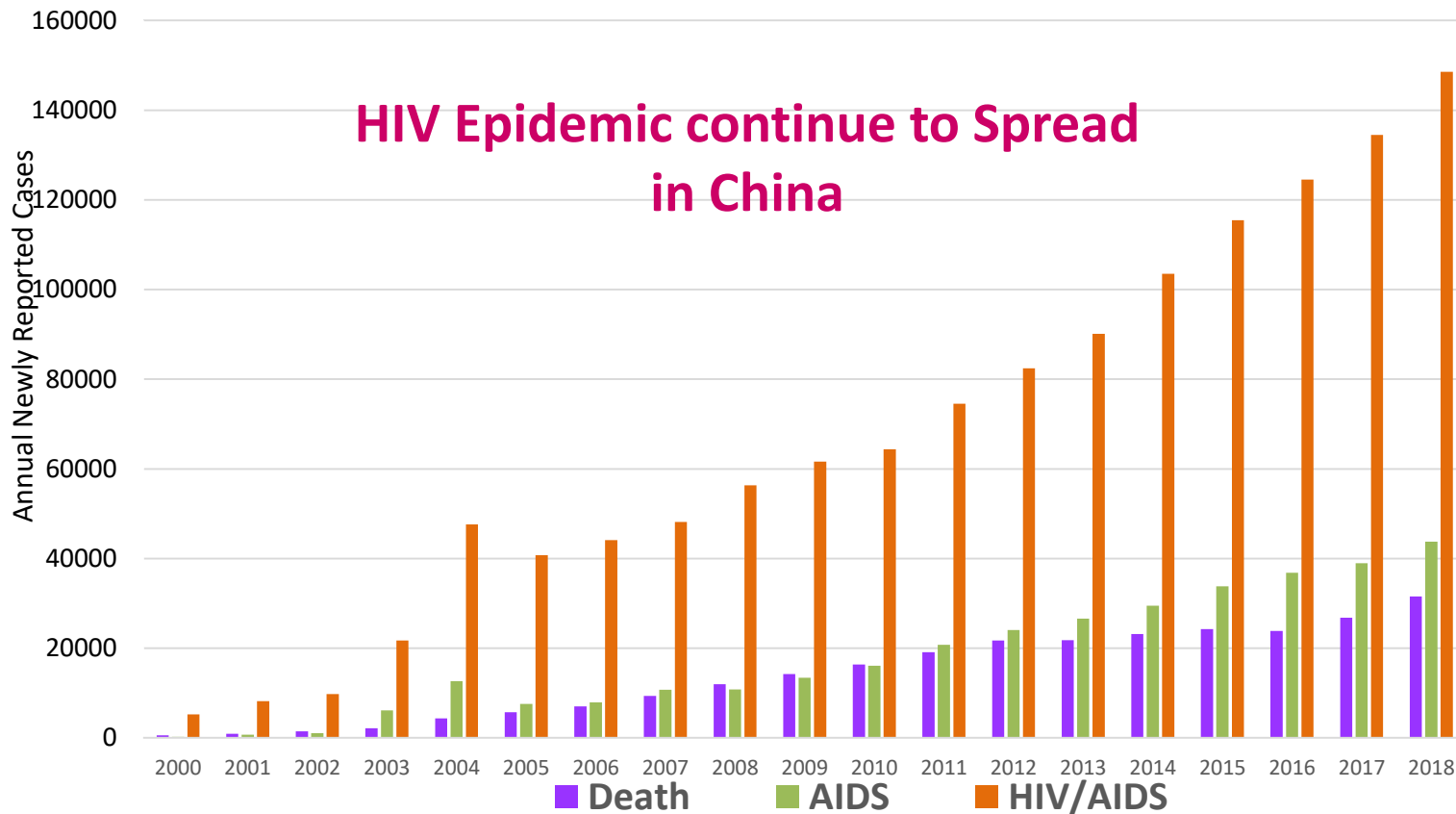
SPONSORED BY:



IN PARTNERSHIP WITH:



Annual Reported HIV/AIDS cases



AIDS Remain No. 1 Killer among all Inf. Dis. in China, 2018

<u>Inf. Dis.</u>	<u>Death</u>	<u>Mortality(/100,000)</u>	<u>Proportion%</u>
Total	22924	1.64	
AIDS	19107	1.37	83
TB	2236	0.16	10
Viral Hepatitis	606	0.04	3
Rabies	426	0.03	2
Flu	144	0.01	1

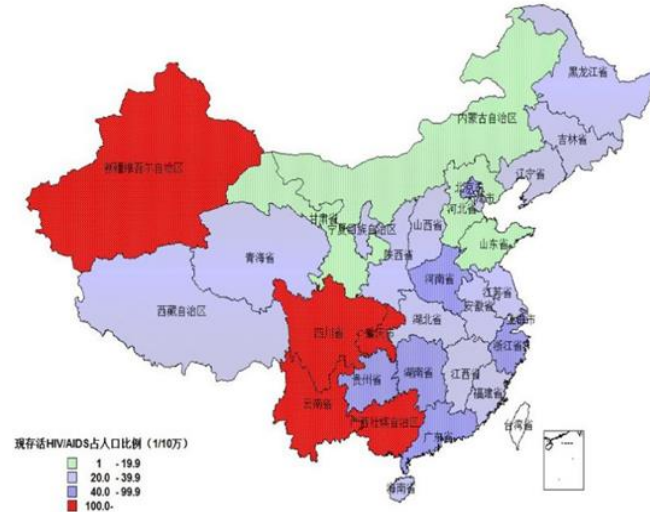
- AIDS accounted for **83%** of Total Inf. Dis Death;
- AIDS death was **5** times as all other inf. Dis.

Geographic Distribution of Cases

By cases

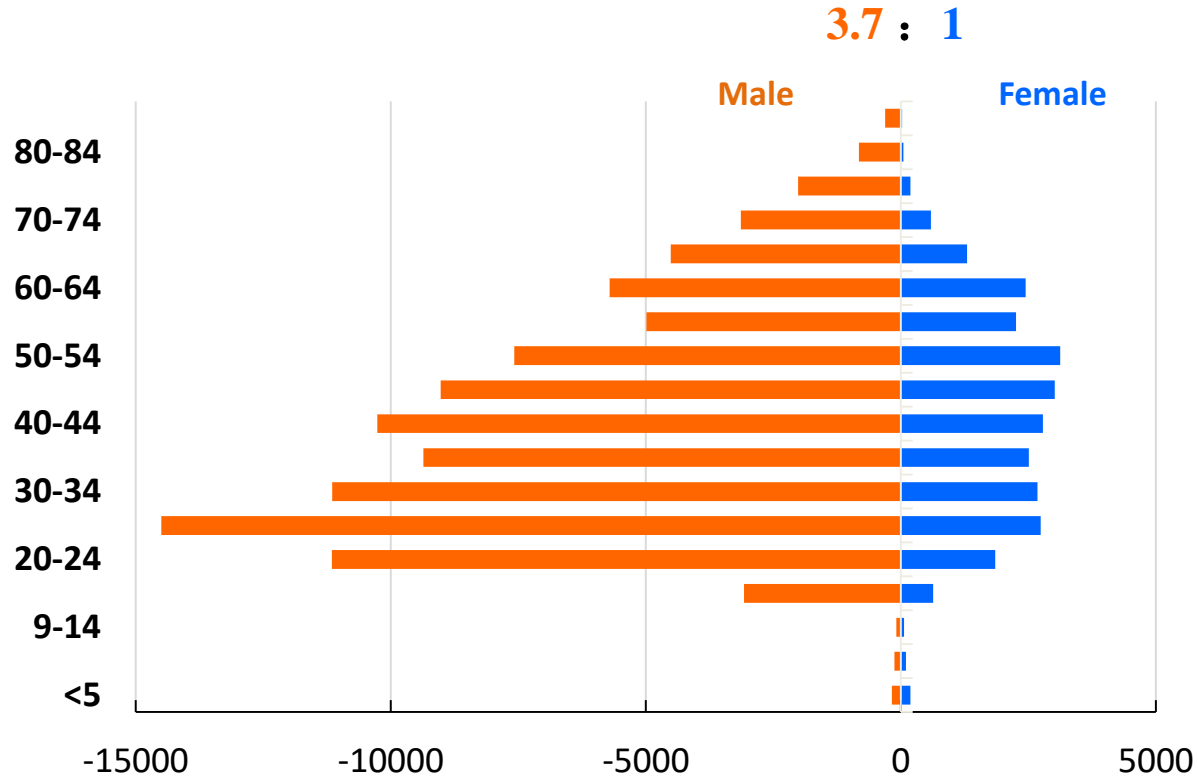


By prevalence

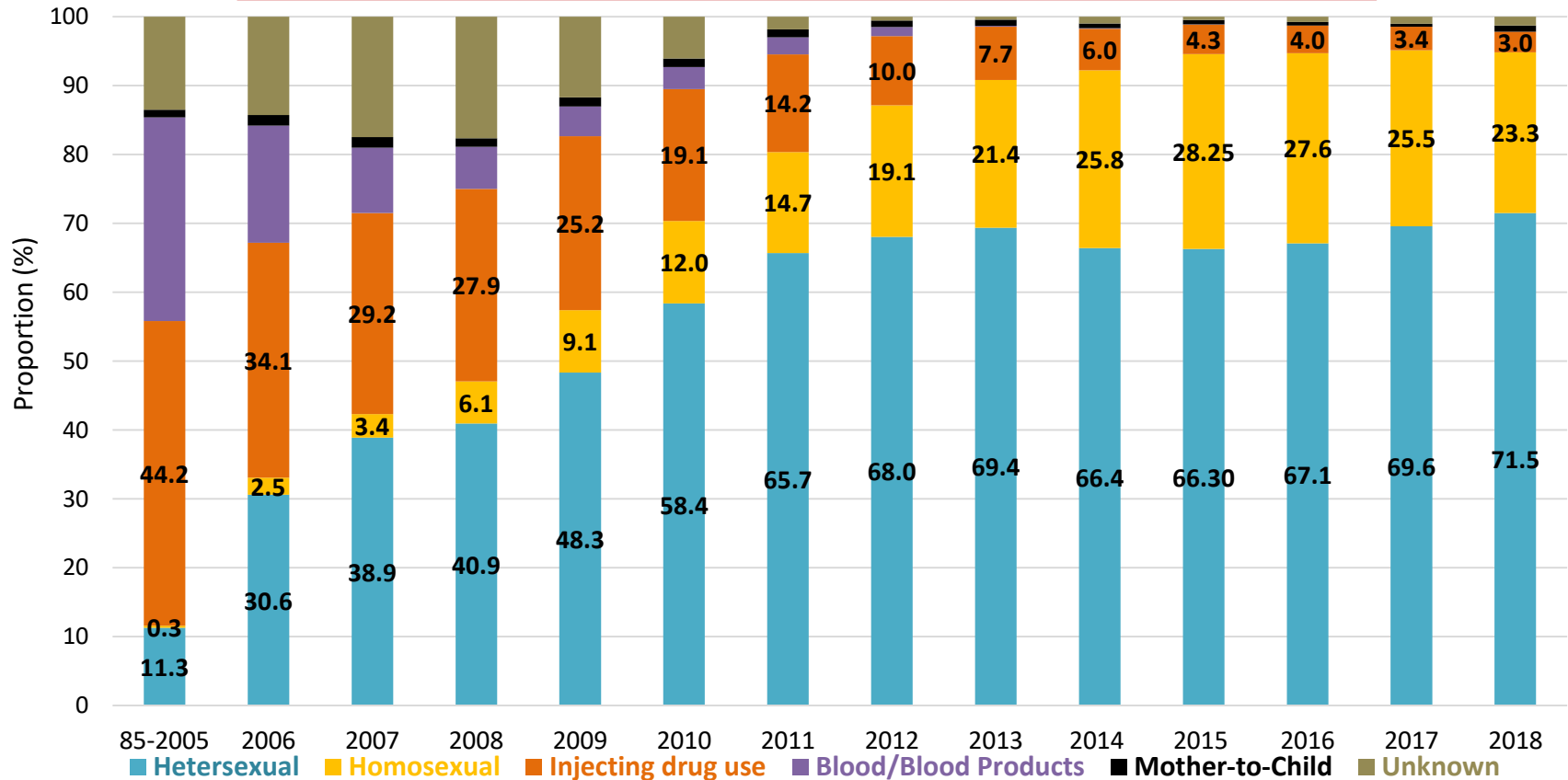


Uneven Distribution, MANY epidemics

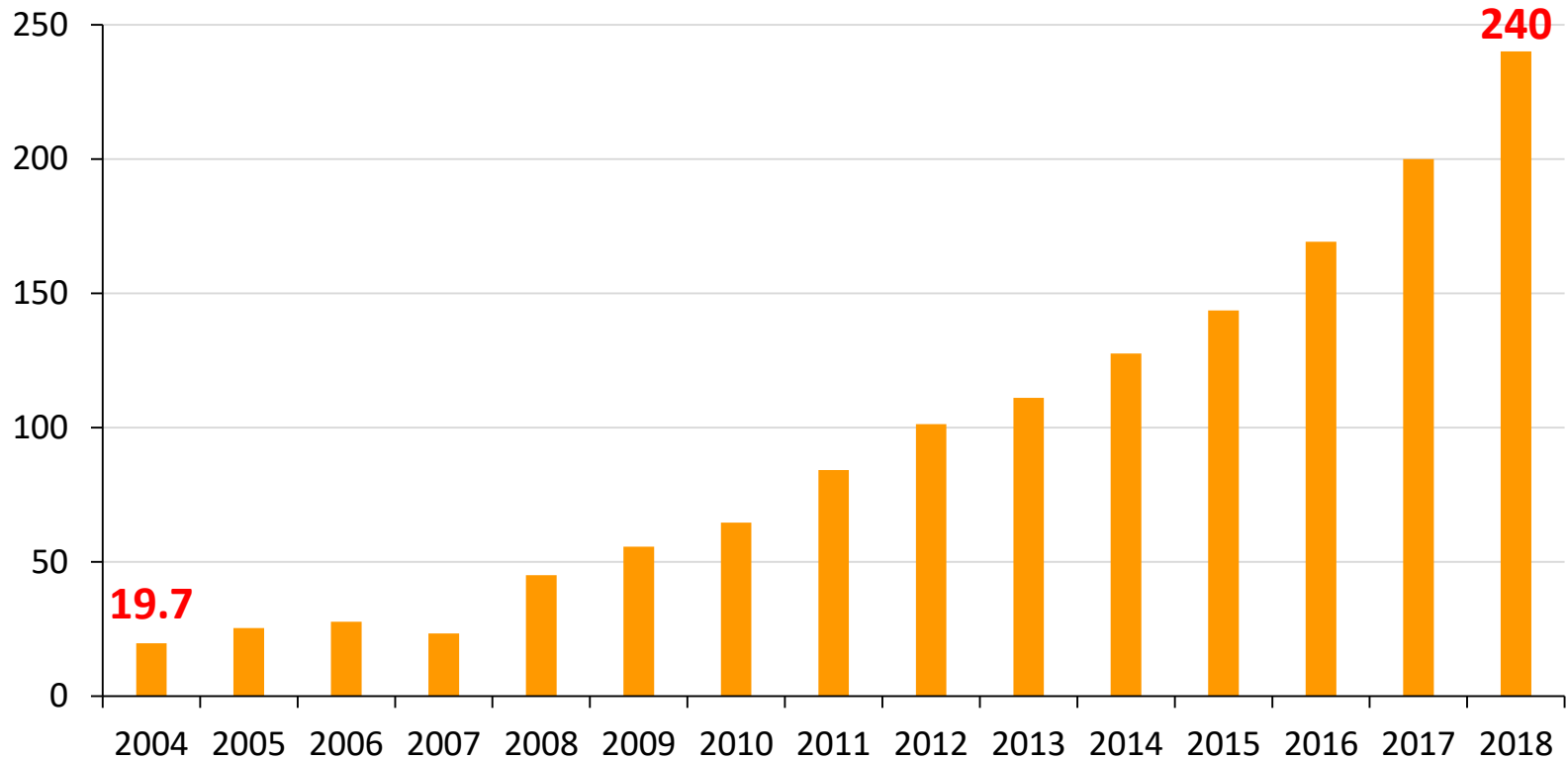
Majority male, concentrated in 20-49



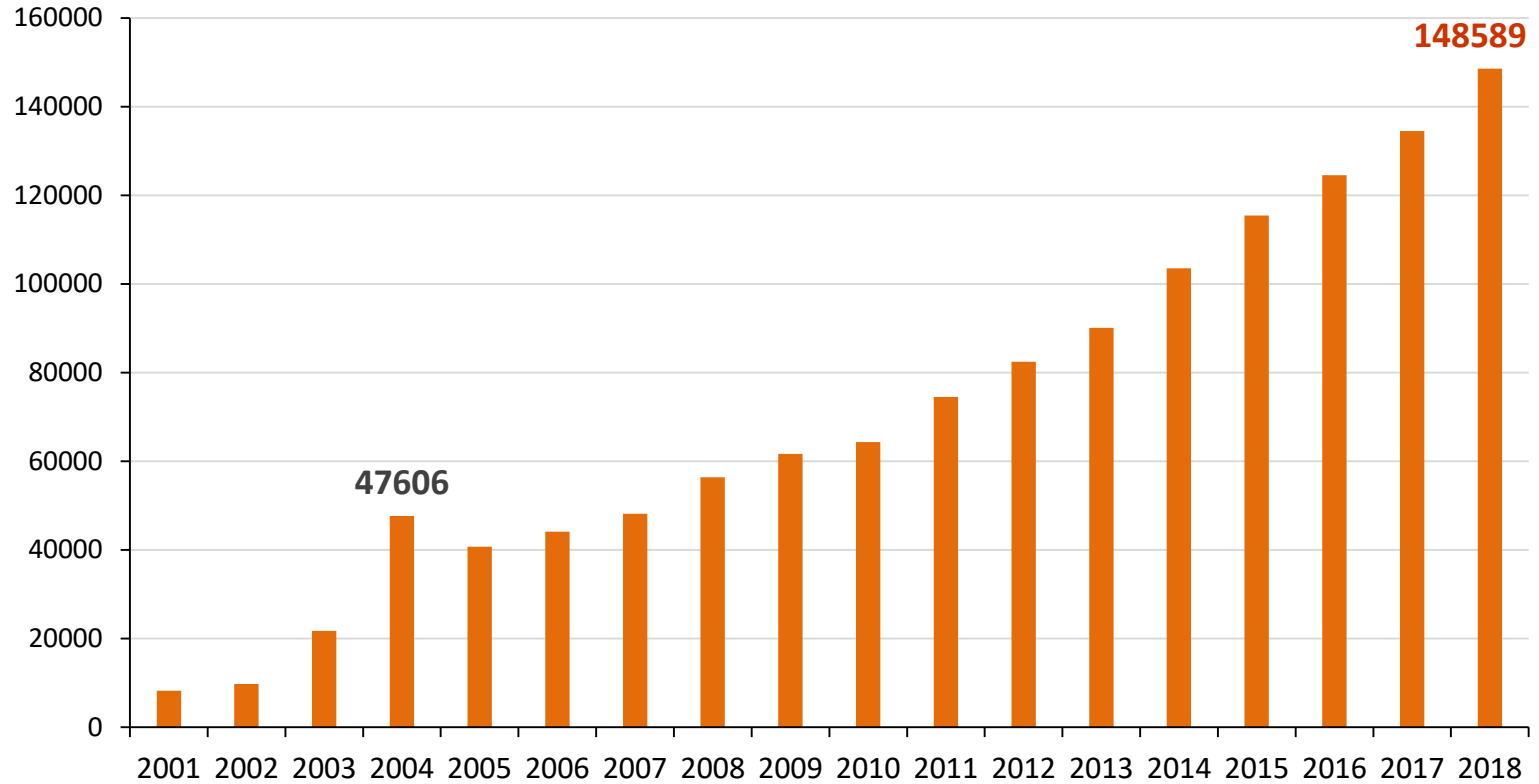
HIV Transmission Modes over Time



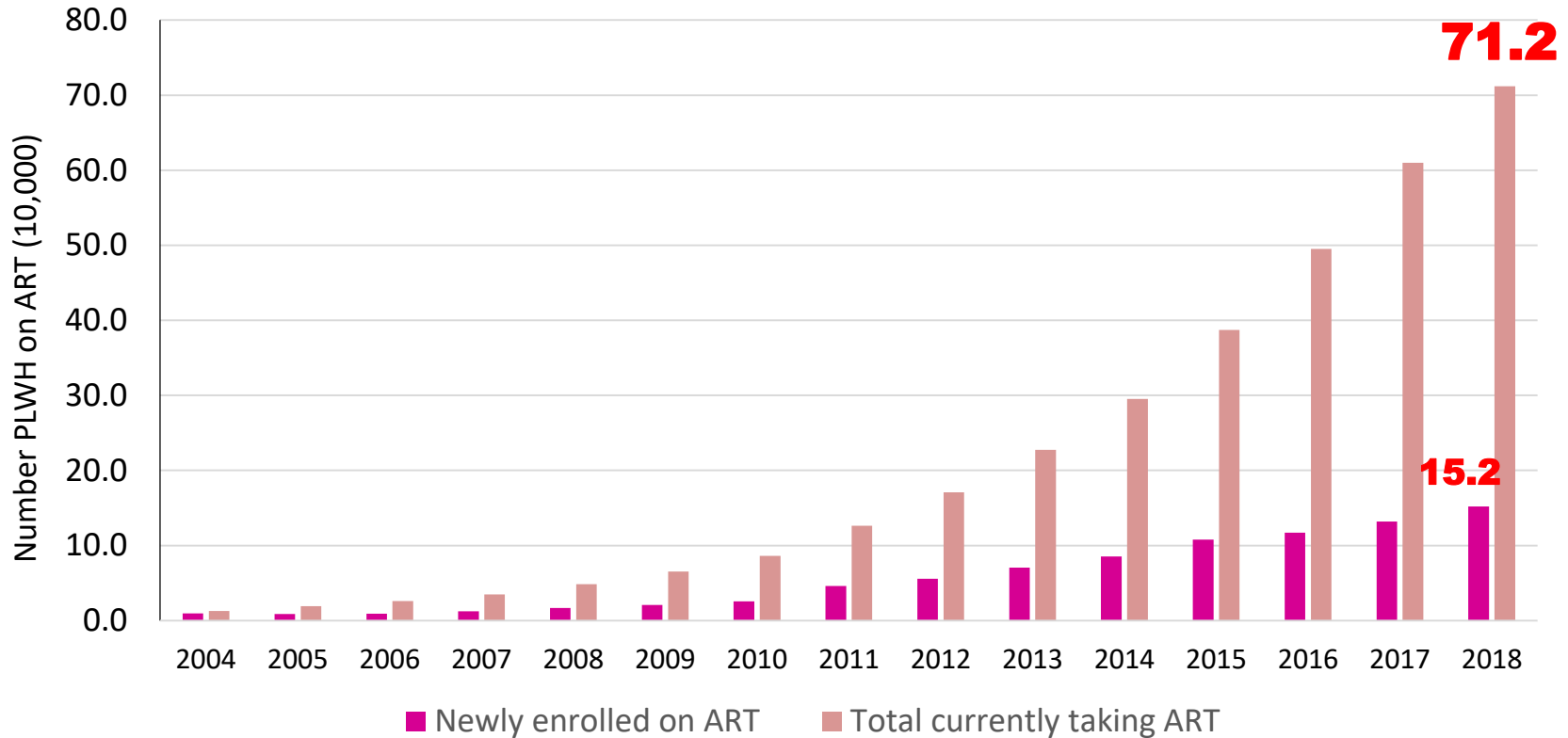
Annual Number of HIV Tests in China (million)



Annual Number of HIV/AIDS Diagnosed



Number of PLWH on ART in China



90-90-90 in China

	2005	2007	2009	2011	2013	2015	2018
Diagnose	21%	30%	37%	45%	54%	68%	69%
ART Coverage	9.8%	20%	23%	35%	51%	67%	83%
Viral suppression	-	-	-	85%	86%	90%	94%

90-90-90 in Selected Provinces in China 2018

	Beijing	Tianjin	Shanghai	Chongqing	Yunnan	Guizhou	Hunan	China
Diagnose	80%	58%	<50%	72%	81%	61%	54%	69%
ART Coverage	90%	80%	82%	79%	88%	70%	73%	83%
Viral suppression	99%	97%	96%	95%	96%	92%	94%	94%

Challenges

- The most challenge is the first **diagnosis**;
- The **number of PLWH** is difficult to know.
- The number of PLWH is based on **estimation**, that has considerable **uncertainty**.