



8th International Conference on **HIV TREATMENT AND PREVENTION ADHERENCE**

jointly sponsored by



Postgraduate Institute
for Medicine

The Florida Department of Health in Broward County Addresses HIV Care Linkage, Retention, and Adherence

Abraham Feingold, Psy.D.
Florida Department of Health
in Broward County



Where We Work



8th International
Conference on
**HIV TREATMENT
AND PREVENTION
ADHERENCE**

Where We Play



8th International
Conference on
**HIV TREATMENT
AND PREVENTION
ADHERENCE**

Why you should take an HIV test

In Broward County, it's estimated in 2011 that **1 out of 5** people with HIV are **unaware** they are HIV positive.

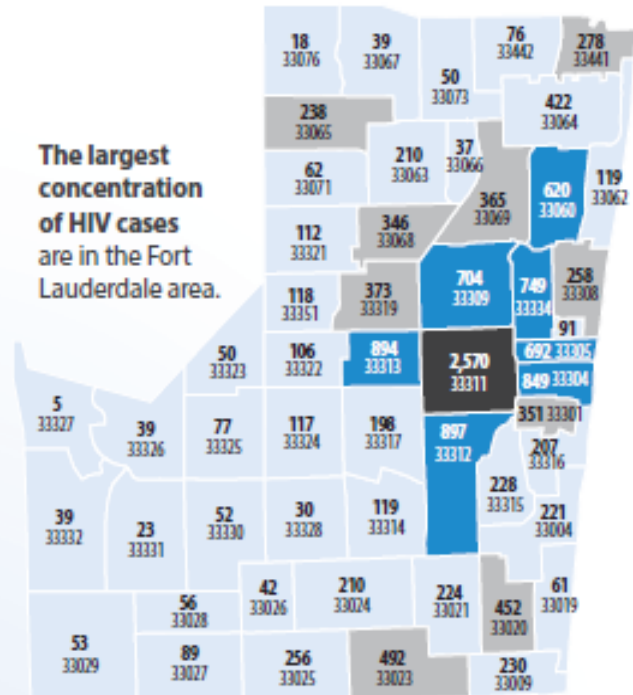


That works out to an estimated

4,205

in Broward.

The largest concentration of HIV cases are in the Fort Lauderdale area.



NEW HIV CASES REPORTED IN BROWARD COUNTY IN 2011

1,040

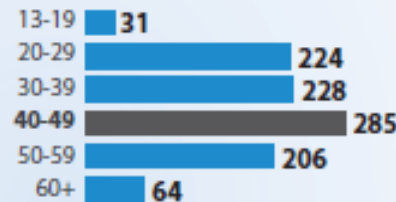
NEW HIV cases reported in 2011

That's an increase of **25%**

in NEW HIV cases from 2010

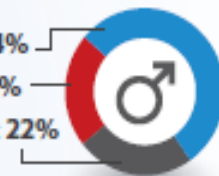
An average of **2.85** new HIV cases were diagnosed per day

Most new HIV cases affect people between the ages of 40 and 49.



511 new HIV cases were reported for males who have sex with males.

White: 54%
Black: 24%
Hispanic: 22%



Confluence of Forces

- Evolving state of HIV care in Broward County
- Emerging literature on “treatment *as* prevention”
- Funding shift to develop a treatment adherence program as an adjunct to a client’s community-based care system



FDOH/Broward County Conducted 11 Focus Groups

- Groups included 74 participants living with HIV:
 - Men, women, transgenders
 - Heterosexual, MSM
- Topics Discussed:
 - ART treatment and management; personal and structural barriers
 - Community health beliefs
 - Strategies to overcome barriers



Clients' Perspectives on Barriers to Care

Structural/ Providers

- Language barriers
- Lack of cultural competency skills among providers
- Lack of transportation
- Multiple providers/lack of integrated and streamlined care system/care is difficult to navigate and adherence is challenging

Clients' Perspectives on Barriers to Care

Clients

- Medication intrusiveness into day-to-day life
- Medication side effects
- Self-doubts about readiness to start medication
- Untreated mental illness/ unstable mental health and/or substance abuse
- Stigma; lack of or limited support system

Clients' Perspectives on Barriers to Care

Clients

- Competing financial priorities; inability to pay for unbillable services
- Lack of housing and reliable contact information
- Lack of accurate information about HIV/AIDS, reflecting literacy issues, poor health literacy, and lack of trust in the medical system

Program Objectives

- Identify barriers to engagement or retention in care and factors affecting adherence to ART regimens
- Improve attendance at medical appointments and adherence to ART
- Enhance resiliency and self-efficacy skills to better negotiate illness challenges

Program Objectives

- Improve use of community and healthcare system resources
- Implement evidence-based, multi-disciplinary, and proactive interventions to improve the health and quality of life of people living with HIV in Broward County



PROACT

- **P**articipate
- **R**etain
- **O**bserve
- **A**dhere
- **C**ommunicate
- **T**eamwork

PROACT

The PROACT Program
was created as a
countywide, specialized,
and proactive
public health initiative.



PROACT Staffing

- Positions:
 - Health System/HIV Peer Navigators (contract with community-based organization)
 - Community Health Nurses
 - Behavioral Health Professional
- All have/will receive(d) training in motivational interviewing

Evidence-Based Programming

- PROACT incorporates 18 of 37 programmatic recommendations made by the International Association of Physicians in AIDS Care Panel

PROACT Services

- Comprehensive assessment concerning barriers to care and ART adherence
- HIV-related education (how to communicate with healthcare providers, the meaning of lab results)
- Support services (appointment reminders; appointment support/accompaniment; interpreter services; and identification of community resources, including transportation)

PROACT Services

- Medication management (e.g. adherence assessment and education, pillboxes, medication reminder calls and [soon] texts, mDOT)
- Behavioral health assessment and referral to community services
- Referral to manualized, evidence-based, adherence-focused behavioral health interventions not offered in the community

Enhanced HIV/AIDS Reporting System

- Limited referrals
- State was collecting CD4 counts and viral load measurements
- FDOH/Broward County expressed interest in gaining access to line-item eHARS data

Enhanced HIV/AIDS Reporting System

- Plan to hire two DIS workers, as Florida law stipulates that these data can only be used by DIS workers
- Workers will monitor data to identify persons with increasing viral loads, decreasing CD4 counts, or no follow-up labs and contact the provider

DIS Workers Refer to PROACT

- Goal is to get written consent for DIS to share information about individual in a referral to PROACT for assessment and intervention
- DIS workers will also conduct outreach to individuals who have never been linked to care

PROACT Performance Measures

- Culled in part from the National HIV/AIDS Strategy
- Measures include:
 - External Referrals
 - Intake Screening Rate
 - Case Complexity Score (Index)

PROACT Performance Measures

- Measures include:
 - Linkage to Mental Health Services within 60 Days of Assignment
 - Linkage to Substance Abuse Services within 60 Days of Assignment
 - Linkage to HIV Primary Care Services within 90 Days of Assignment

PROACT Performance Measures

- Measures include:
 - Retention in HIV Primary Care
 - Undetectable Viral Load

PROACT Program Director

Abraham Feingold, Psy.D.
Florida Department of Health
in Broward County

Abraham_Feingold@doh.state.fl.us

Telephone: 954-467-4700, Ext. 5546

Fax: 954-467-4476

