



# 90-90-90 Targets Workshop

---

July 22-23, 2017 • Paris

Sponsored by



In partnership with



# Beyond Antiretrovirals: Social- behavioral Science for Attaining 90-90-90

K Rivet Amico  
University of Michigan

# 90-90-90 Targets Workshop

---

July 22-23, 2017 • Paris

Sponsored by



In partnership with



# Disclosures

- Educational grant from Gilead Sciences for PrEP awareness media development through University of Michigan
- PrEP advisory meeting Gilead Sciences 2017

# Social-Behavioral Science

“...focus on the understanding of **behavioral or social processes**, or on the use of these processes to **predict** or **influence** health outcomes or health risk factors.”

NIH OBSSR.BSSR definition. 2010. Available at: <https://obssr.od.nih.gov/about-us/bssr-definition/>. Accessed June 1, 2016. ; Stirratt IMPAACT 2017

90-90-90 Targets Workshop | July 22-23, 2017 • Paris



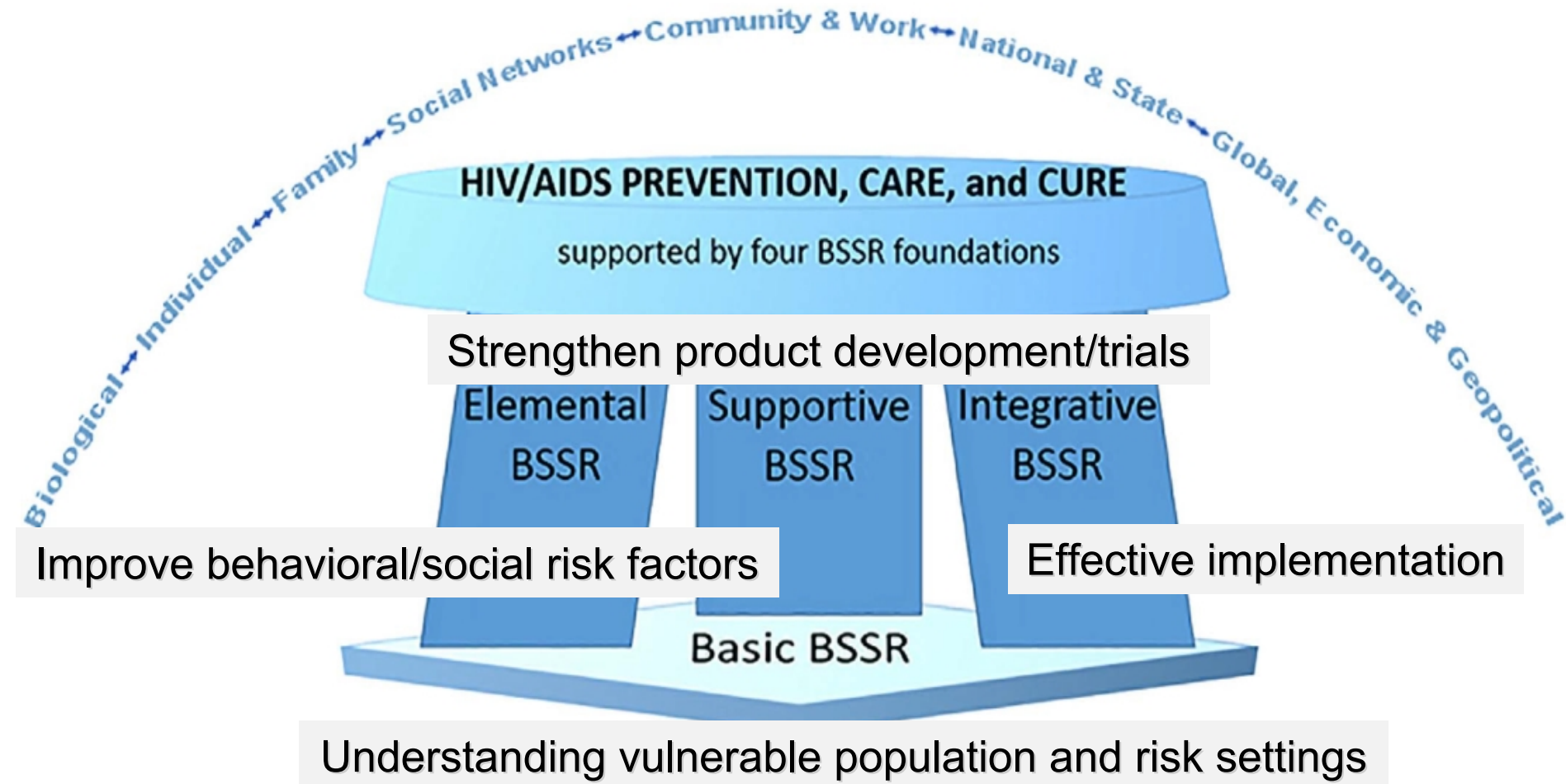
# The Roles of Behavioral and Social Science Research in the Fight Against HIV/AIDS: A Functional Framework

*Paul Gaist, PhD, MPH\* and Michael J. Stirratt, PhD†*

---

*J Acquir Immune Defic Syndr* • Volume 75, Number 4, August 1, 2017

90-90-90 Targets Workshop | July 22-23, 2017 • Paris



# Reaching 90-90-90

- We know our goals; We have a deadline

## 90-90-90: Treatment for all



There are 36.7 million people living with HIV



But only 60% know they are HIV positive.  
The rest do not



Less than half of people living with HIV are on antiretroviral therapy



And only 38% have achieved undetectable levels of HIV

### 90-90-90 HIV treatment targets

30 million people on treatment by 2020

90% of people living with HIV know their status

90% of people who know their status are on antiretroviral therapy

90% of people on antiretroviral therapy achieve viral suppression

## Countdown to 2020

3

Years

5

Months

9

Days

# Reaching 90-90-90

- We know our goals; We have a deadline
- We have tools to succeed [testing, ART]
- We have tools to monitor progress

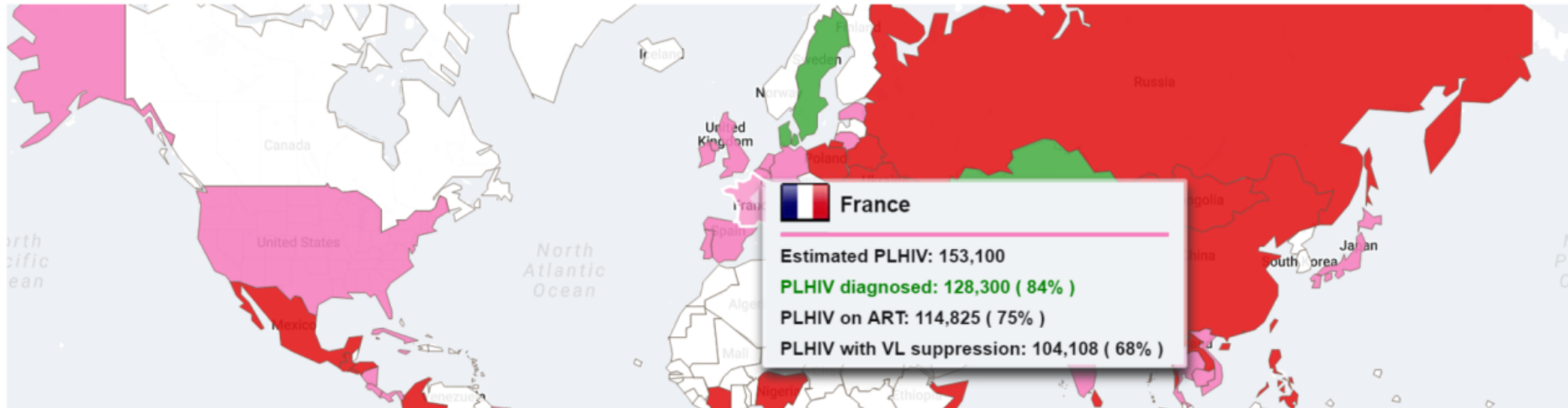


# Targets- Distal Goal(s)

People living with HIV (PLHIV) diagnosed  
(76 countries with available data)



Target: 90%



Projected numbers as of Sunday, July 23, 2017 12:17:25 AM ⓘ

AIDS related-deaths in 2016

1, 554, 681

New HIV Infections in 2016

3, 264, 212

People receiving ART

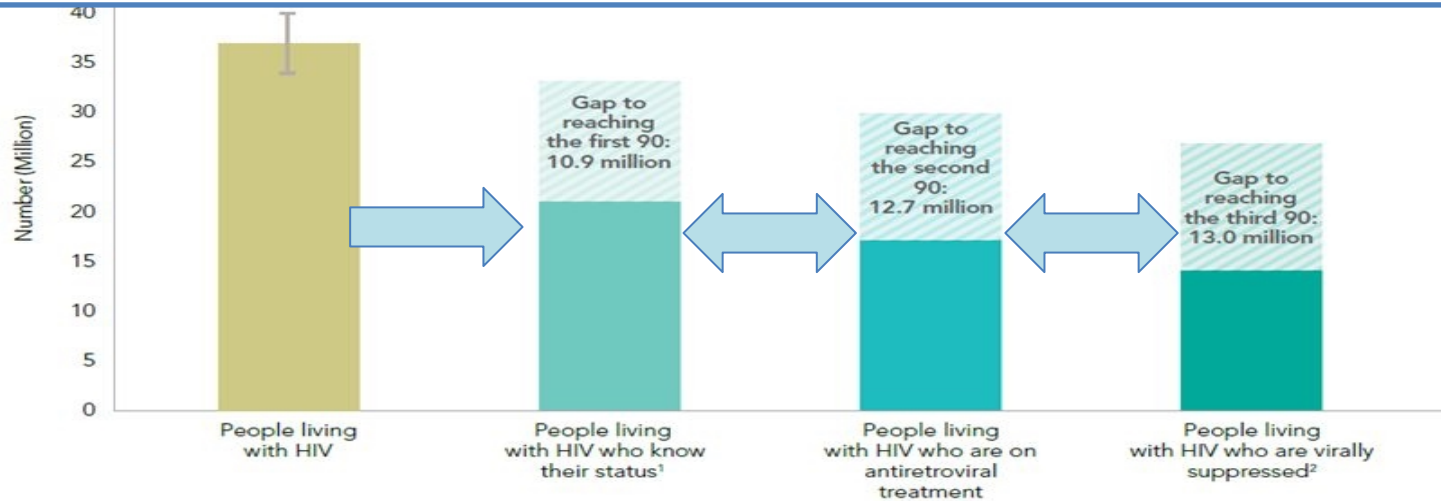
20, 094, 504

People living with HIV

37, 788, 311

## Social Behavioral Science

Helps evolve understanding gaps, why they persist and how to create bridges of relevance and meaning to communities that use them.



<sup>1</sup> 2015 measure derived from data reported by 87 countries, which accounted for 73% of people living with HIV worldwide.

<sup>2</sup> 2015 measure derived from data reported by 86 countries. Worldwide, 22% of all people on antiretroviral therapy were reported to have received a viral load test during the reporting period.

Source: UNAIDS special analysis, 2016; for more details, see annex on methods.

# Reaching 90-90-90

- Gaps and strategies that have bridged transitions between the 90s
- Call for combination support packages, differentiated care, and going local



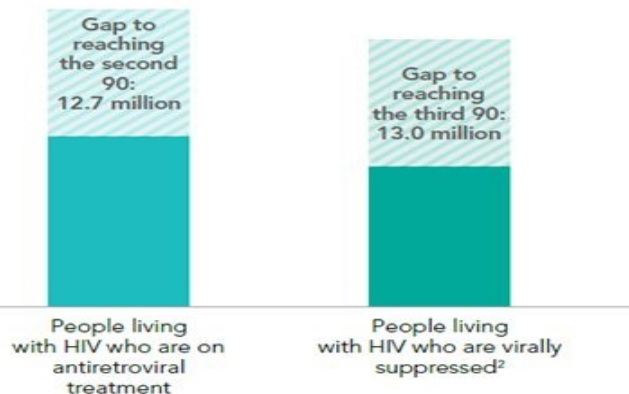
90-90-90

cascade, global, 2015

## CHALLENGES

- *Inconvenience*
- *Cost*
- *Confidentiality*
- *Non-affirming services*
- *Discrimination/Stigma*
- *Low risk perception*
- *Fear of results*

Source: UNAIDS special



accounted for 73% of people living with HIV worldwide.  
e, 22% of all people on antiretroviral therapy were reported to have

90-90-90

## CHALLENGES

- *Inconvenience*
- *Cost*
- *Confidentiality*
- *Non-affirming*
- *Discrimination*
- *Low risk perc*
- *Fear of results*

- Testing as standard procedures
- In-community HIV testing
  - Same-day /Mobile
  - Door-to-door (PopART)
- Home-based/couples
- Self-testing
- Wrap around/responsive care
- **Efforts to decrease stigma, poverty, violence, discrimination**

Source: UNAIDS spec

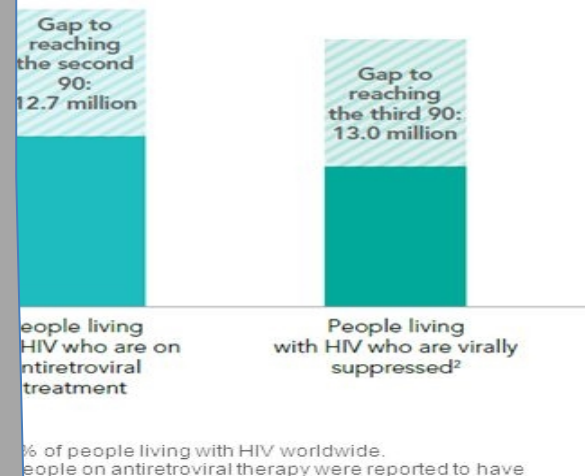
90–90–90

e, global, 2015

## CHALLENGES

- *Long pre-ART period*
- *Confidentiality*
- *Abandonment*
- *Adjustment to dx*
- *Drug/alcohol use/MH*
- *Mistrust*
- *Stigma, discrimination*
- *Delays in Rx*

Source: UNAIDS special analysis, 2017



90–90–90

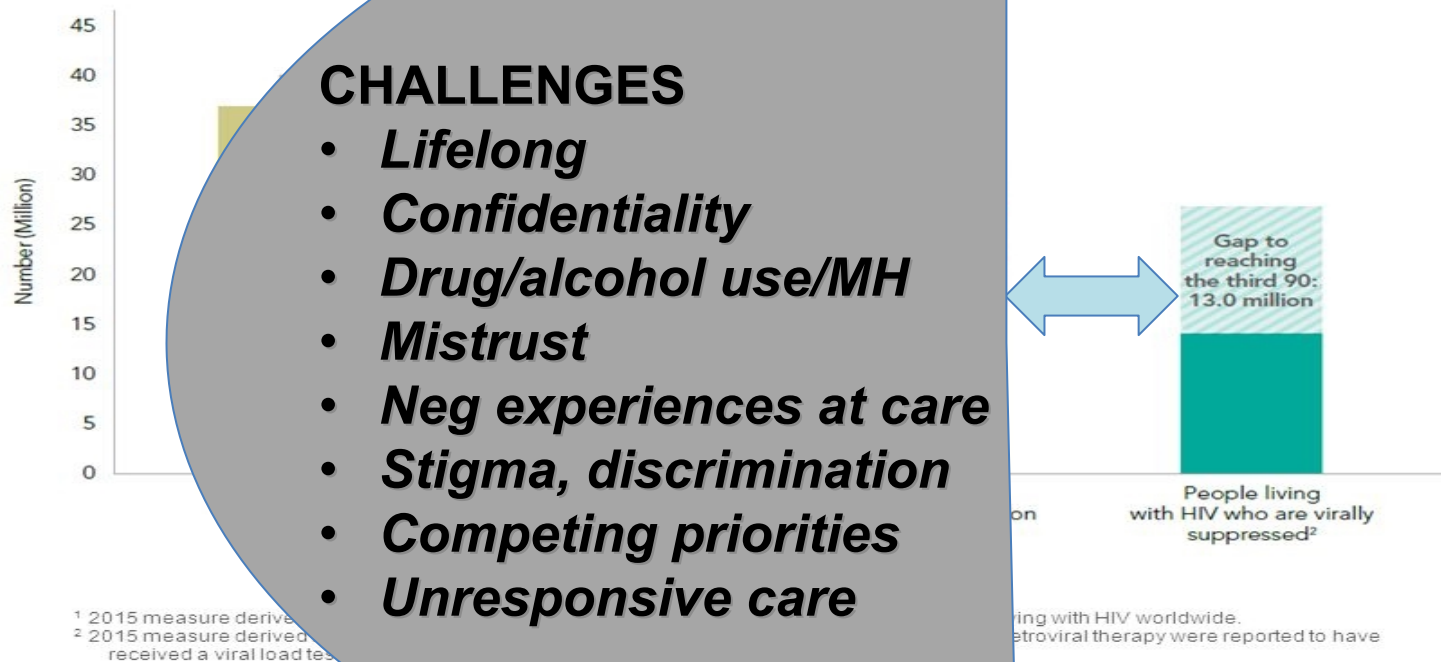
## CHALLENGES

- *Long pre-ART period*
- *Confidentiality*
- *Abandonment*
- *Adjustment to dx*
- *Drug/alcohol use/*
- *Mistrust*
- *Stigma, discrimination*
- *Delays in Rx*

- Red carpet programs
- Navigators/linkage specialists
- Peer/CHW
- Affirming care centers
- De-centralized care
- Task shifting/relief care systems

Source: UNAIDS special analysis, 2015

# 90-90-90 target: Global, 2015



Source: UNAIDS special analysis, 2016; for more details, see annex.



90–90–90 target



Source: UNAIDS special analysis, 2016; for more details, see annex 1.

- Adherence groups
- Adherence support
  - Education (ART)
  - Problem solving
  - Motivation
  - Peer support
  - Adherence monitoring
  - eHealth/mobile health
- Clinician training
- Outreach re-engagement
- Data 2 care
- Retention awareness

# A robust package of intervention strategies



- But outcomes in behavioral trials and across intervention studies are mixed...

Failing to find the one big fix?

Successfully finding there isn't one?

Amico et al 2006

Simoni et al 2006

Lyles et al 2007 AJPH

Fogarty et al 2002 PEC

Munro et al 2007 BMC

**Combination **SUPPORT** Packages should include diverse, differentiated strategies to support uptake, use and engagement**

# Communication Packages

*One structure fit everyone's needs*

**RESPONSIVE**

## Different

*Not everyone is in need of a structure/program*

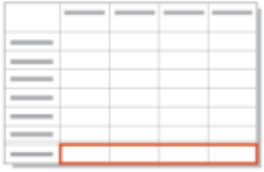


# GO LOCAL TO REACH GLOBAL TARGETS

# Local, group, community Level

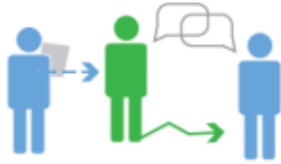
## NEEDS ASSESSMENT PROCESS AND TOOLS

### DATA ANALYSIS



*Analyzing data on usage, satisfaction, and trends to assess future needs*

### INTERVIEWS & OBSERVATIONS



*Guided conversations with users & first-hand observations of how they use spaces*

### FOCUS GROUPS



*Interactive sessions to gather input on needs and validate data from other tools*

### PERSONAS



*Creating portraits of representative users using motivations and behaviors*

### USE CASE

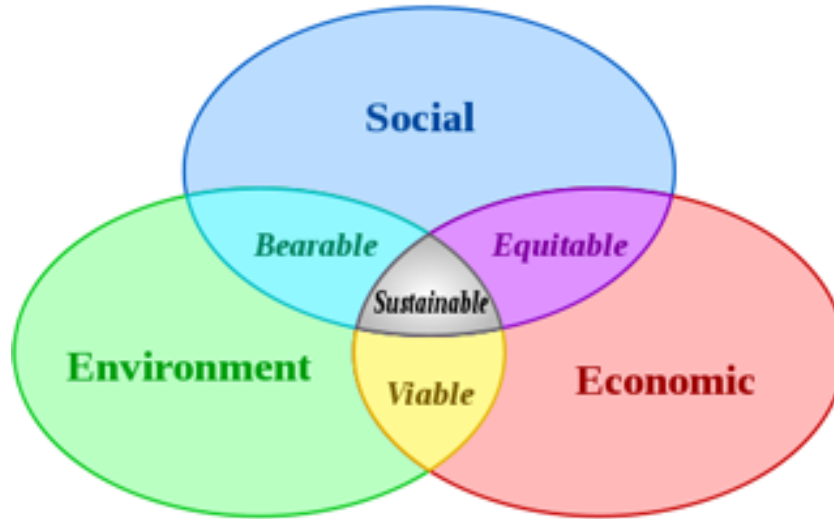


*Stories of how a future space will be used -- who, where, why, and how*

©brightspot strategy

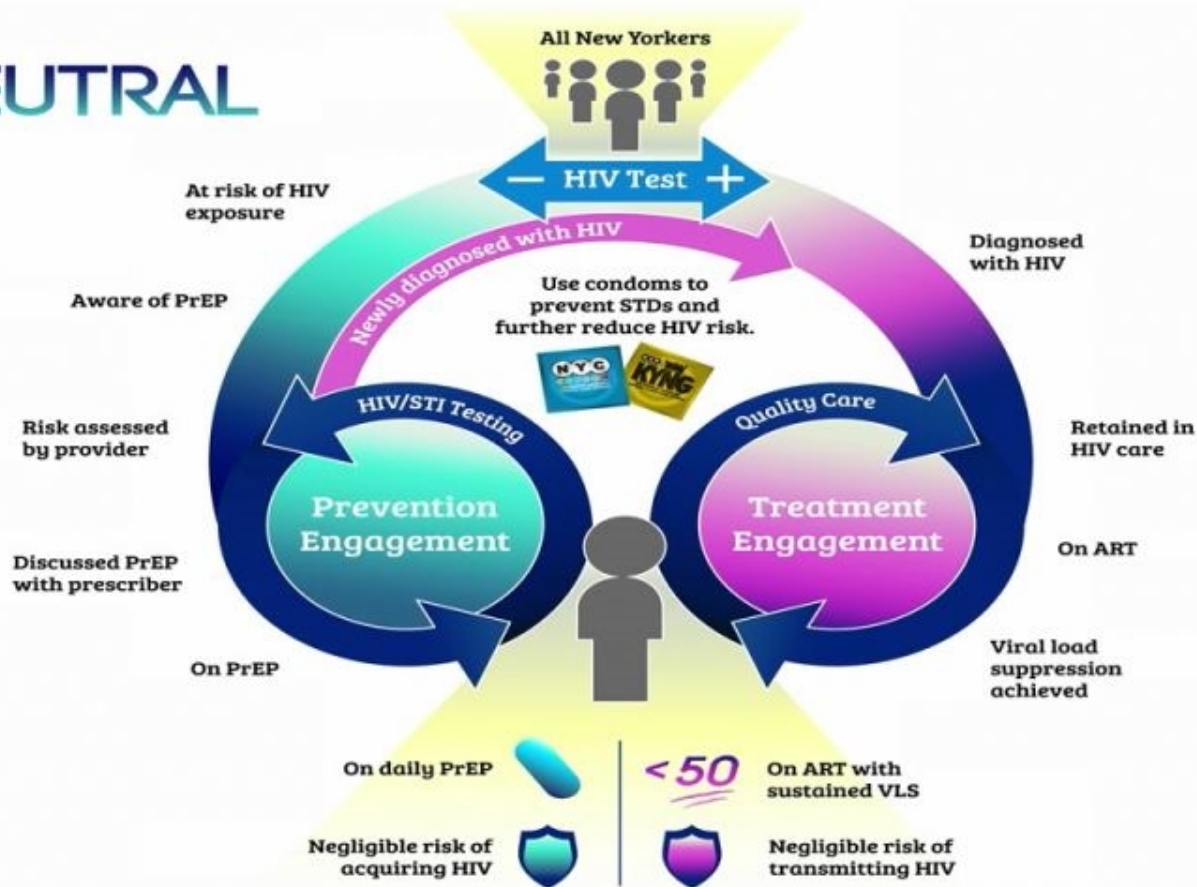
# Reaching 90-90-90

- All hands on deck
- Science
- Community
- Policy





# NEW YORK CITY'S HIV STATUS NEUTRAL PREVENTION & TREATMENT CYCLE



People at risk of HIV exposure **taking daily PrEP** and people with HIV **with sustained viral load suppression** do not acquire or transmit HIV.

# Thank you

# Additional works used...

- Morin SF, Khumalo-Sakutukwa G, Charlebois ED, et al. Removing barriers to knowing HIV status: same-day mobile HIV testing in Zimbabwe. *Journal of acquired immune deficiency syndromes (1999)*. 2006;41(2):218-224.
- Shanaube K, Schaap A, Chaila MJ, et al. Community intervention improves knowledge of HIV status of adolescents in Zambia: findings from HPTN 071-PopART for youth study. *AIDS (London, England)*. 2017;31 Suppl 3:S221-s232.
- Pando MA, Dolezal C, Marone RO, et al. High acceptability of rapid HIV self-testing among a diverse sample of MSM from Buenos Aires, Argentina. *PloS one*. 2017;12(7):e0180361.
- Matovu JK, Buregyeya E, Arinaitwe J, Wanyenze RK. '... if you bring the kit home, you [can] get time and test together with your partner': Pregnant women and male partners' perceptions regarding female partner-delivered HIV self-testing in Uganda - A qualitative study. *International journal of STD & AIDS*. 2017;956462417705800.
- Masters SH, Agot K, Obonyo B, Napierala Mavedzenge S, Maman S, Thirumurthy H. Promoting Partner Testing and Couples Testing through Secondary Distribution of HIV Self-Tests: A Randomized Clinical Trial. *PLoS medicine*. 2016;13(11):e1002166.
- Nannozi V, Wobudeya E, Matsiko N, Gahagan J. Motivators of couple HIV counseling and testing (CHCT) uptake in a rural setting in Uganda. *BMC public health*. 2017;17(1):104.
- Nannozi V, Wobudeya E, Gahagan J. Fear of an HIV positive test result: an exploration of the low uptake of couples HIV counselling and testing (CHCT) in a rural setting in Mukono district, Uganda. *Global health promotion*. 2016.
- Johnson CC, Kennedy C, Fonner V, et al. Examining the effects of HIV self-testing compared to standard HIV testing services: a systematic review and meta-analysis. *Journal of the International AIDS Society*. 2017;20(1):1-10.
- Covey J, Rosenthal-Stott HE, Howell SJ. A synthesis of meta-analytic evidence of behavioral interventions to reduce HIV/STIs. *Journal of behavioral medicine*. 2016;39(3):371-385.
- Merchant RC, Clark MA, Liu T, et al. Comparison of Home-Based Oral Fluid Rapid HIV Self-Testing Versus Mail-in Blood Sample Collection or Medical/Community HIV Testing By Young Adult Black, Hispanic, and White MSM: Results from a Randomized Trial. *AIDS and behavior*. 2017.
- Nel JA, Yi H, Sandfort TG, Rich E. HIV-untested men who have sex with men in South Africa: the perception of not being at risk and fear of being tested. *AIDS and behavior*. 2013;17 Suppl 1:S51-59.
- Matovu JK, Wanyenze RK, Wabwire-Mangen F, et al. "Men are always scared to test with their partners ... it is like taking them to the Police": Motivations for and barriers to couples' HIV counselling and testing in Rakai, Uganda: a qualitative study. *Journal of the International AIDS Society*. 2014;17:19160.
- Ruria EC, Masaba R, Kose J, et al. Optimizing linkage to care and initiation and retention on treatment of adolescents with newly diagnosed HIV infection. *AIDS (London, England)*. 2017;31 Suppl 3:S253-s260.
- Gomez CA, Tat SA, Allen D, Gordon D, Browe D. What Will It Take to End the HIV/AIDS Epidemic? Linking the Most Disenfranchised Into Care Through Outreach. *AIDS patient care and STDs*. 2017;31(3):122-128.
- Koester KA, Morewitz M, Pearson C, et al. Patient navigation facilitates medical and social services engagement among HIV-infected individuals leaving jail and returning to the community. *AIDS patient care and STDs*. 2014;28(2):82-90.
- Patten GE, Wilkinson L, Conradie K, et al. Impact on ART initiation of point-of-care CD4 testing at HIV diagnosis among HIV-positive youth in Khayelitsha, South Africa. *Journal of the International AIDS Society*. 2013;16:18518.

Govindasamy D, Meghij J, Kebede Negussi E, Clare Baggaley R, Ford N, Kranzer K. Interventions to improve or facilitate linkage to or retention in pre-ART (HIV) care and initiation of ART in low- and middle-income settings--a systematic review. *Journal of the International AIDS Society*. 2014;17:19032.

Fox MP, Rosen S, Geldsetzer P, Barnighausen T, Negussie E, Beanland R. Interventions to improve the rate or timing of initiation of antiretroviral therapy for HIV in sub-Saharan Africa: meta-analyses of effectiveness. *Journal of the International AIDS Society*. 2016;19(1):20888.

Schumann CL, Westergaard RP, Meier AE, Ruetten ML, Vergeront JM. Developing a Patient Navigation Program to Improve Engagement in HIV Medical Care and Viral Suppression: A Demonstration Project Protocol. *AIDS and behavior*. 2017.