



Highlights from Adherence 2016

May 11, 2016

Michael Stirratt Ph.D.

Chief, Adherence to HIV Treatment and Prevention
Program

NIMH Division of AIDS Research

stirrattm@mail.nih.gov



Conflict of Interest Disclosure

Michael Stirratt, Ph.D.

Has no real or apparent
conflicts of interest to report.



Conference Evolution/Content

1. ART adherence
2. HIV care engagement/retention
3. Biomedical prevention (PrEP, TasP)
4. Cross-cutting issues (e.g. stigma, dignity, rights)

What did we hear at this meeting?



**We are making PROGRESS...
but SIGNIFICANT GAPS and
DISPARITIES REMAIN**

Good News on ART...

#ADHERENCE2016



Improved viral suppression in US young adults

2 Increases in ART Use and Viral Suppression among HIV-Infected Young Adults in the United States, 2009-2013

Linda Beer (presenting), Christine Mattson, Heather Bradley, R. Luke Shouse

Improved ART coverage

103 Implementation of Antiretroviral Therapy Improved between 2001 and 2010 in the US: Population-Level Data from the Medicaid Beneficiaries in the 13 States with the Greatest HIV Prevalence

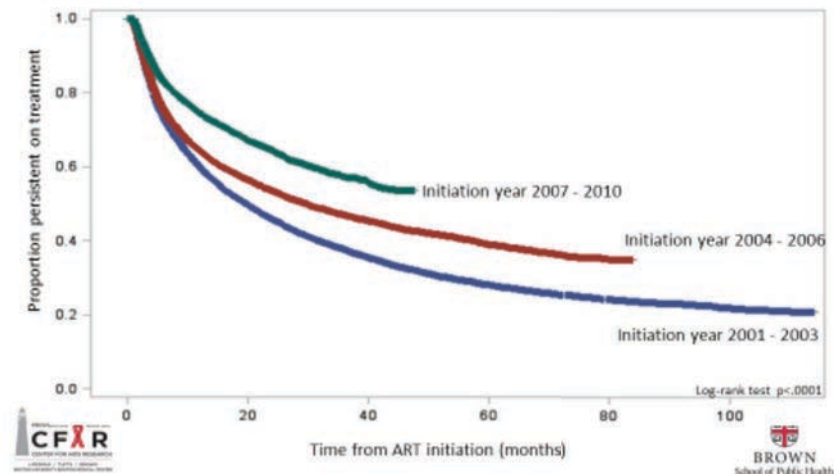
Ira Wilson, Aadia Rana, Omar Galarraga, Theresa Shireman, Yoojin Lee, Bora Youn (presenting)

Improved ART persistence

105 Persistence with Antiretroviral Therapy Improved between 2001 and 2010 in the United States: Population-Level Data from the Medicaid Beneficiaries in the 13 States with the Greatest HIV Prevalence

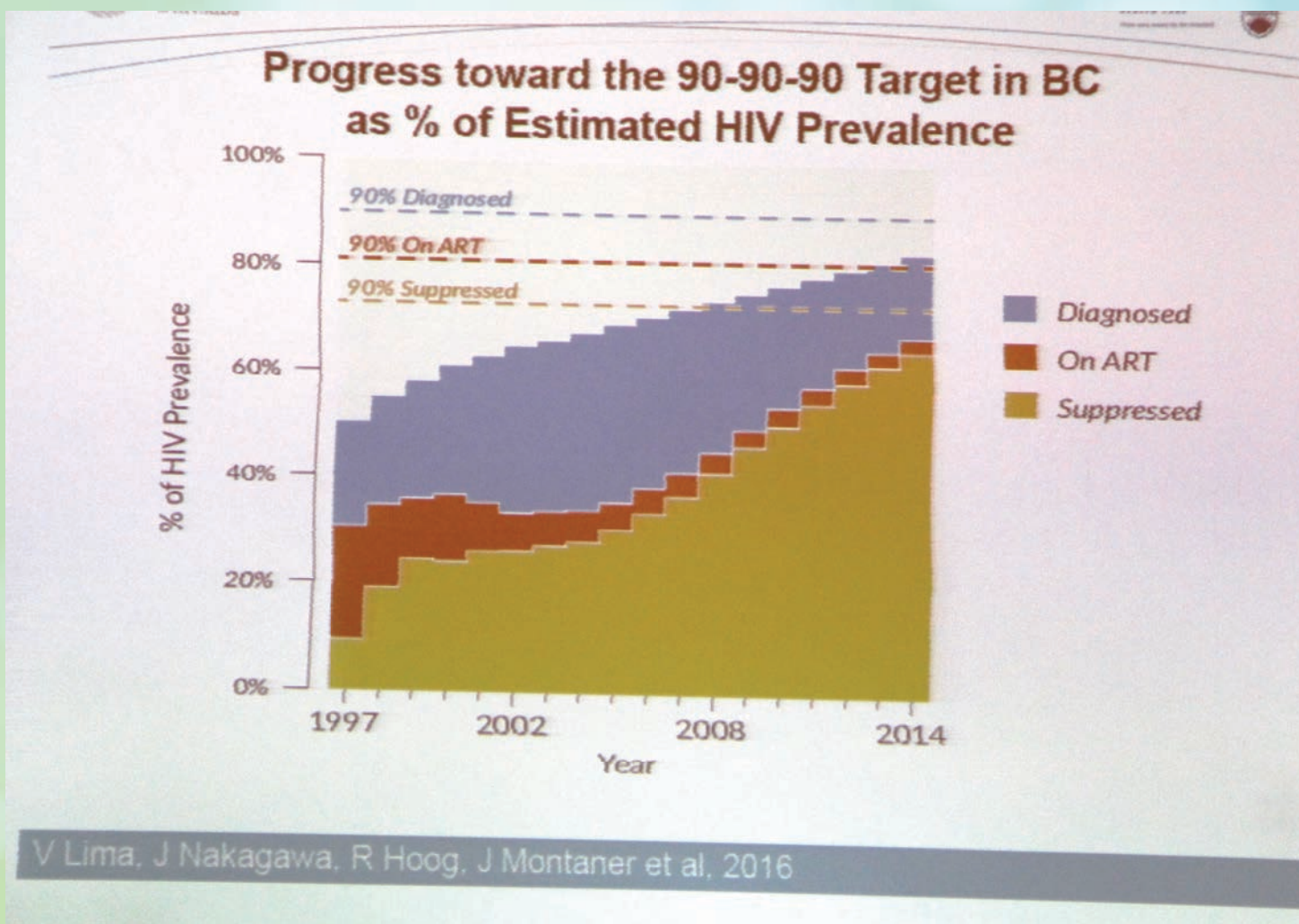
Ira Wilson, Aadia Rana, Omar Galarraga, Theresa Shireman, Yoojin Lee, Bora Youn (presenting)

Time to treatment discontinuation (unadjusted Kaplan-Meier Curve)





Montaner: Progress toward 90-90-90





... yet Disparities Persist

Age disparities in ART use
& viral suppression continue

oral
19 Age Differences in Viral Suppression, ART Use, and Adherence among HIV-Positive MSM Receiving Medical Care in the United States, Medical Monitoring Project, 2009-2013

Nicholas DeGroot (presenting), Linda Beer, Christine Mattson, Joseph Prejean

oral
208 Nonadherence and Unsuppressed Viral Load across Stages of Adolescent Development in US Youth with Perinatally Acquired HIV in the Pediatric HIV/AIDS Cohort Study: A Longitudinal Analysis

Deborah Kacanek (presenting)¹, Kathleen Malee², Claude Mellins³, Renee Smith⁴, Patricia Garvie⁵, Katherine Tassiopoulos¹, Sonia Lee⁶, Claire Berman¹, Mary Paul⁷, Ana Puga⁵, Susannah Allison⁶, Yanling Huo¹

Racial disparities evident

poster
21 Sustained Viral Suppression in a Cohort of In-Care HIV-Positive Patients in Virginia: The Medical Monitoring Project (MMP), 2009-2013

Jennifer Kienzie (presenting), Lauren Yerkes, Celestine Buyu

Low retention, high mortality in
US mothers over the long-term

oral
159 High Mortality and Low Rates of Long-Term Engagement in Care Following Delivery among HIV-Infected Women in Mississippi

Ira Wilson¹, Debbie Konkler Parker², Caron Zlotnick¹, Gina Wingood³, Leandro Mena², Binford Nash², Chisa Lanier², Kendra Johnson⁴, Aadla Rana (presenting)¹

Good News on PrEP

#ADHERENCE2016



Increased PrEP awareness, interest, uptake among US MSM

66 Changing Attitudes to PrEP among Sexually Risky Men who have Sex with Men

Kenneth Mayer¹, Steven Safren², Aaron Blashill³, Samantha Marquez¹, Abigail Batchelder⁴, Conall O'Cleirigh (presenting)⁴

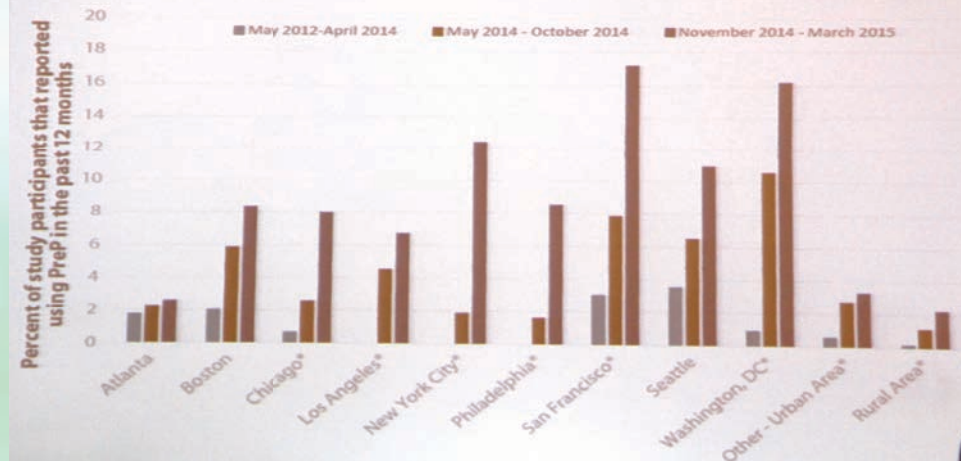
128 Expanding PrEP Implementation as a Key Initiative of the Getting to Zero (GTZ) Consortium in San Francisco

Hyman Scott¹, Shannon Weber², Brad Hare³, Susan Buchbinder¹, Jen Hecht⁴, Susan Scheer¹, Tracey Packer¹, Stephanie Cohen¹, Stephanie Goss⁵, Pierre Cedric-Crouch⁴, Albert Liu (presenting)⁶

Changes in PrEP Use Among U.S. MSM

(3 web surveys, N=10,097)

Delaney et al, CROI, 2016



Kenneth Mayer May 10 Plenary



Where are we lagging on PrEP?

Racial/ethnic disparities in MSM

211 ^{oral} Uptake of Pre-Exposure Prophylaxis (PrEP) in Young Men Who Have Sex with Men is Associated with Race, Sexual Risk Behavior, and Network Size

Anna Hotton¹, Lisa Kuhns (presenting)², John Schneider³, Robert Garofalo², Kayo Fujimoto⁴

Transgender individuals

128 Expanding PrEP Implementation as a Key Initiative of the Getting to Zero (GTZ) Consortium in San Francisco

Hyman Scott¹, Shannon Weber², Brad Hare³, Susan Buchbinder¹, Jen Hecht⁴, Susan Scheer¹, Tracey Packer¹, Stephanie Cohen¹, Stephanie Goss⁵, Pierre Cedric-Crouch⁴, Albert Liu (presenting)⁶

Mayer May 10 Plenary:
- Rural vs. Urban US
- Widescale global access

Cisgender women

104 PrEP Uptake among Cisgender Women at an Urban, Community-Based STI Clinic

Sachin Jain, Cedric Bien, Uri Felsen, Viraj Patel, Oni Blackstock (presenting)

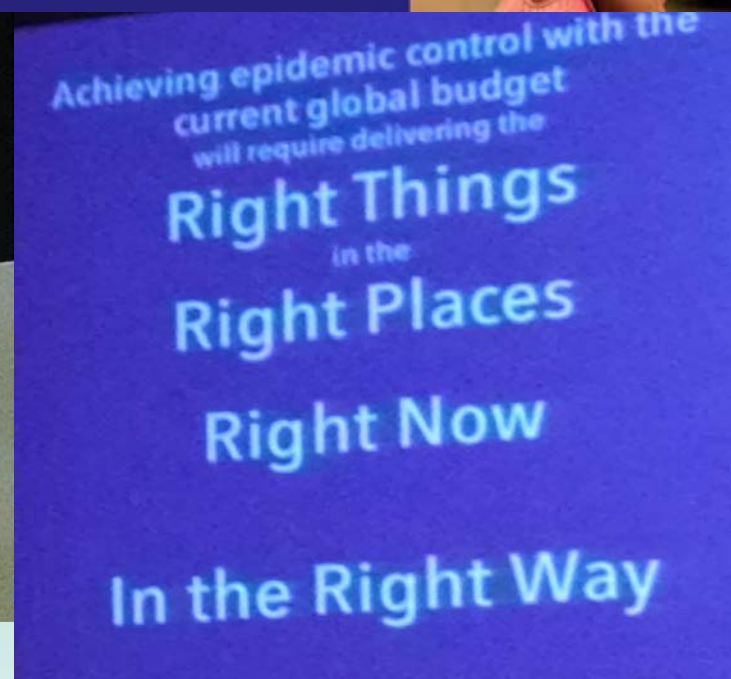
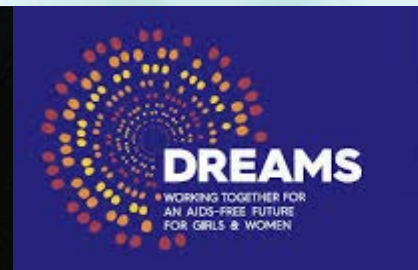
“PrEP may not be for EVERY woman, but it’s an option for ALL women.” – KimberLeigh Smith, Callen-Lorde Community Health Center



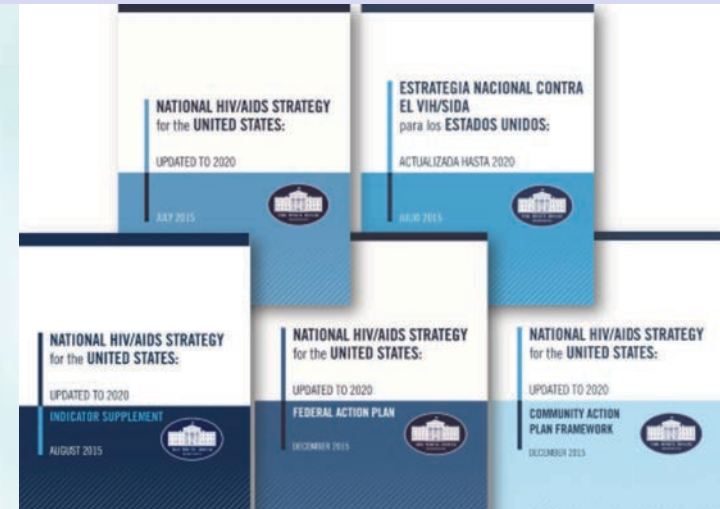
IMPORTANCE OF SETTING GOALS, STAYING FOCUSED, and WORKING TOGETHER



Ambassador Birx: PEPFAR Targets & Targeting



Lansky: US NHAS Goals/Foci



THE GOALS



Reducing new HIV infections



Improving access to care and health outcomes



Reducing HIV-related health disparities



Achieving a more coordinated national response

Advances in 4 Key Areas Are of Critical Focus through 2020



Widespread HIV testing and linkage to care enabling people living with HIV to access treatment early.



Full access to PrEP services for those whom it is appropriate and desired, with support for medication adherence for those using PrEP.



Broad support for people living with HIV to remain engaged in comprehensive care, including support for treatment adherence.



Universal viral suppression among people living with HIV.

Granich: IAPAC Fast Track Cities



FAST-TRACK CITY INITIATIVE TARGETS

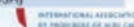
- 90%** Of people living with HIV knowing their HIV status
- 90%** Of people who know their HIV status on ART
- 90%** Of people on treatment with suppressed viral load
- 0%** Stigma and discrimination



CURRENT FAST-TRACK CITIES

AFRICA		LATIN AMERICA/CARIBBEAN
1. Abidjan (Côte d'Ivoire)	1. Kigali (Rwanda)	1. Buenos Aires (Argentina)
2. Accra (Ghana)	2. Kinshasa (DRC)	2. Curitiba (Brazil)
3. Algiers (Algeria)	3. Lagos (Nigeria)	3. Havana (Cuba)
4. Atakpamé (Togo)	4. Libreville (Gabon)	4. Kingston (Jamaica)
5. Bamako (Mali)	5. Lilongwe (Malawi)	5. Port-au-Prince (Haiti)
6. Bamenda (Cameroon)	6. Lomé (Togo)	6. Rio de Janeiro (Brazil)
7. Bangui (CAR)	7. Lubumbashi (DRC)	7. Salvador de Bahia (Brazil)
8. Blantyre (Malawi)	8. Lusaka (Zambia)	8. Santa Fe (Honduras)
9. Casablanca (Morocco)	9. Maputo (Mozambique)	9. Santiago (Chile)
10. Cotonou (Benin)	10. Mbuji-Mayi (DRC)	10. San Miguelito (Panama)
11. Dakar (Senegal)	11. Nairobi (Kenya)	11. São Paulo, (Brazil)
12. Dar es Salaam (Tanzania)	12. Ouesso (Rep. of Congo)	
13. Djibouti (Djibouti)	13. Pretoria (South Africa)	
14. Djougou (Benin)	14. Windhoek (Namibia)	
15. Douala (Cameroon)	15. Yaoundé (Cameroon)	
16. Durban (South Africa)		
17. Johannesburg (South Africa)		
EUROPE	ASIA/PACIFIC	NORTH AMERICA
1. Amsterdam (Netherlands)	1. Bangkok (Thailand)	1. Atlanta (USA)
2. Athens (Greece)	2. Delhi (India)	2. Baltimore (USA)
3. Brussels (Belgium)	3. Jakarta (Indonesia)	3. Denver (USA)
4. Bucharest (Romania)	4. Melbourne (Australia)	4. Mexico City (Mexico)
5. Geneva (Switzerland)	5. Mumbai (India)	5. Miami (USA)
6. Kiev (Ukraine)		6. Oakland (USA)
7. Paris (France)		7. Providence (USA)
		8. San Francisco (USA)
		9. Washington, DC (USA)

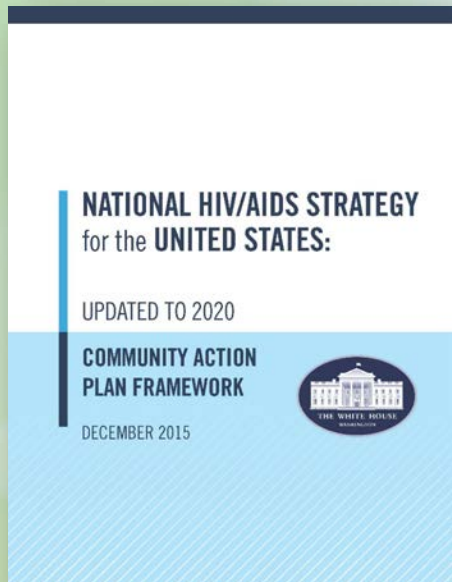
* Several other jurisdictions have signed onto the initiative, this list reflects jurisdictions classified as cities





Community Based Organizations and NGOs

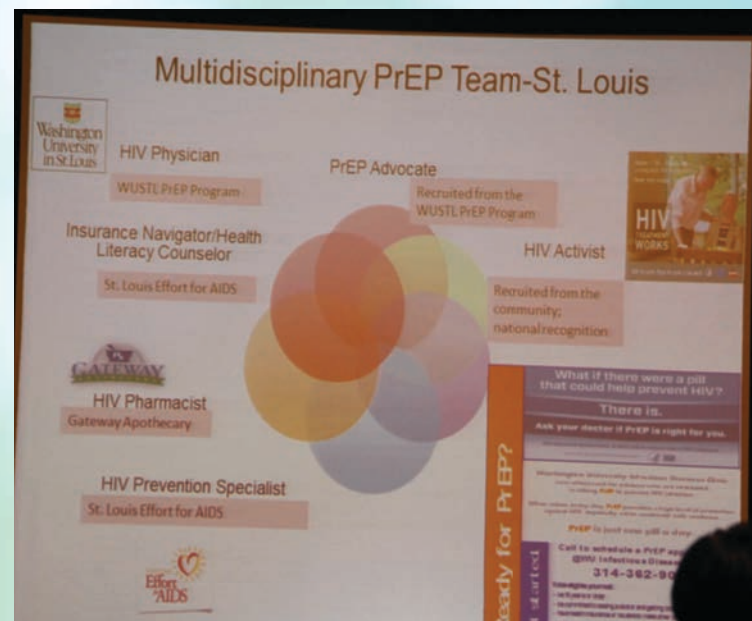
- Birx: Civil society plays a critical role
- Lansky: NHAS as national plan not Federal plan;
Community Action Plan Framework



Multi-sectoral Coalitions to Advance HIV Prevention



San Francisco “Getting to Zero” Coalition (Liu Plenary)



St. Louis Coalition to Advance PrEP Delivery (Mayer Plenary)



**DATA will GUIDE THE WAY
and IMPROVE OUR EFFORTS**



Data-Driven Approaches

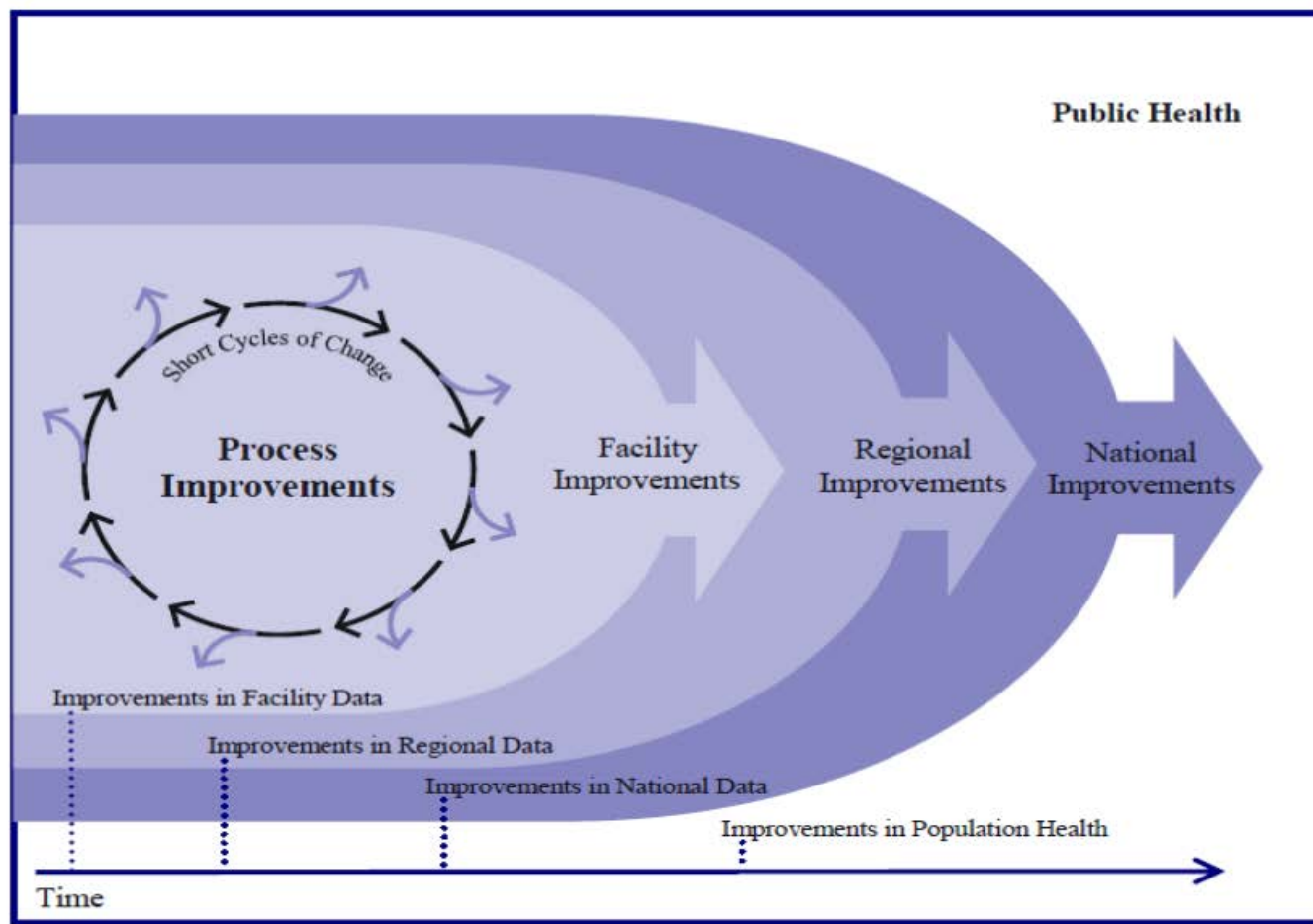
- Bruce Agins May 9 Plenary: Harnessing data to guide local, state, and national HIV initiatives
 - Data-to-Care efforts
 - Quality improvement
 - Care continuum dashboards
 - EMRs and provider alerts
- Examples
 - Lansky: NHAS indicators
 - Nash: NYS End-the-Epidemic (ETE) Dashboard





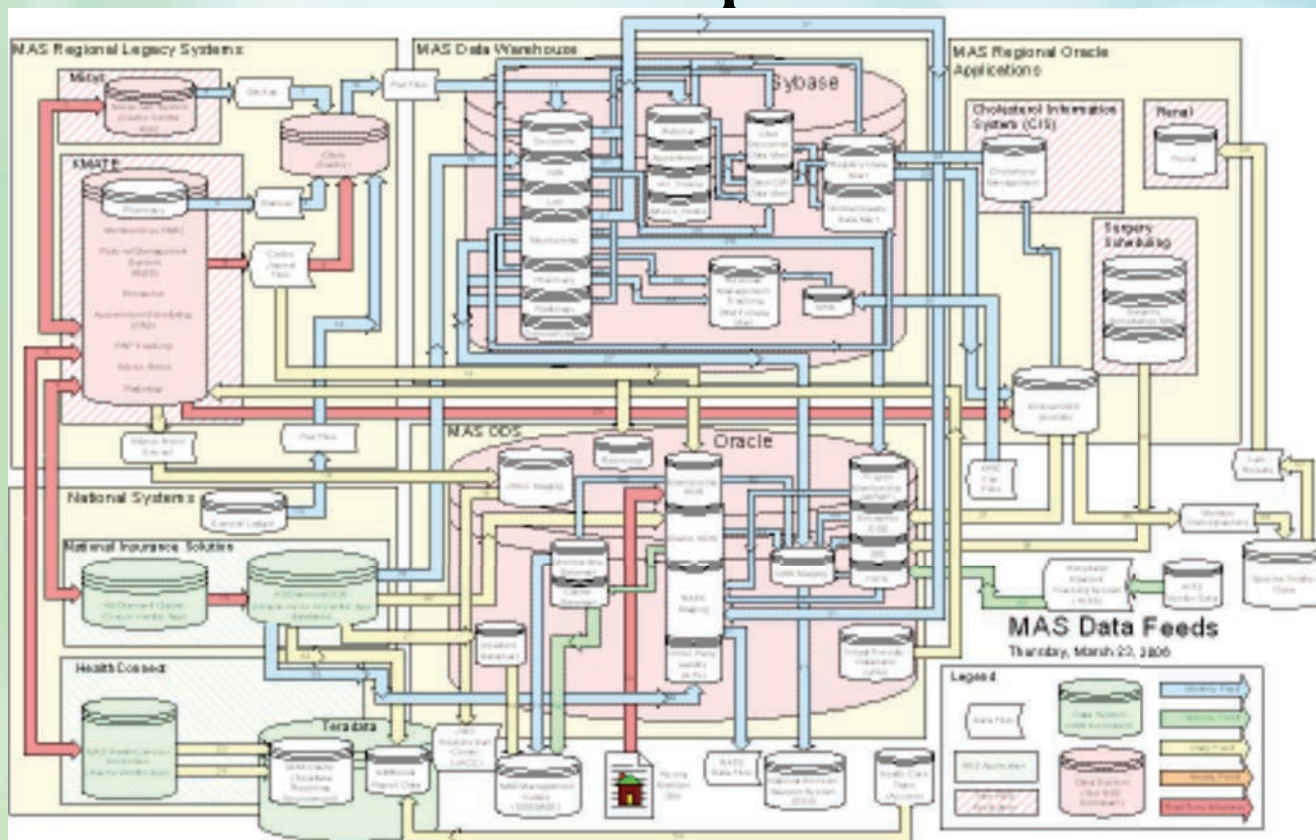
Aging Plenary: Quality Improvement

Linking QI with Public Health Outcomes



Care system data: Valuable and complex

#ADHERENCE2016

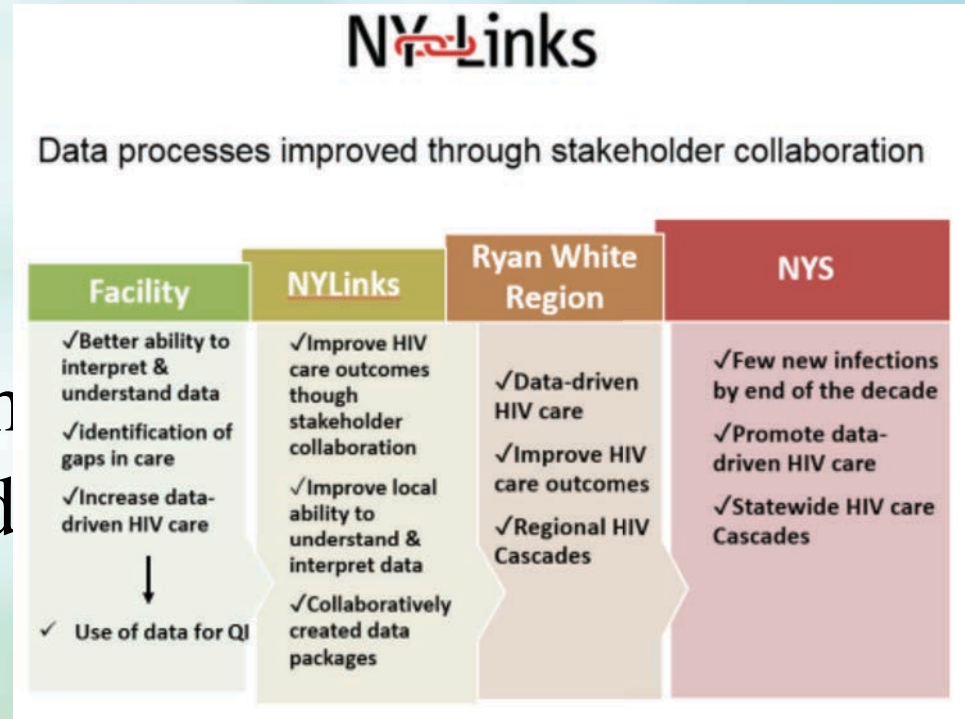


Michael Horberg May 9 Session:
Big Data Approaches



Increasing Data Impact

- Bruce Agins Plenary:
Quality and impact of data-driven approaches are strengthened through public health, clinic, and & CBO partnerships



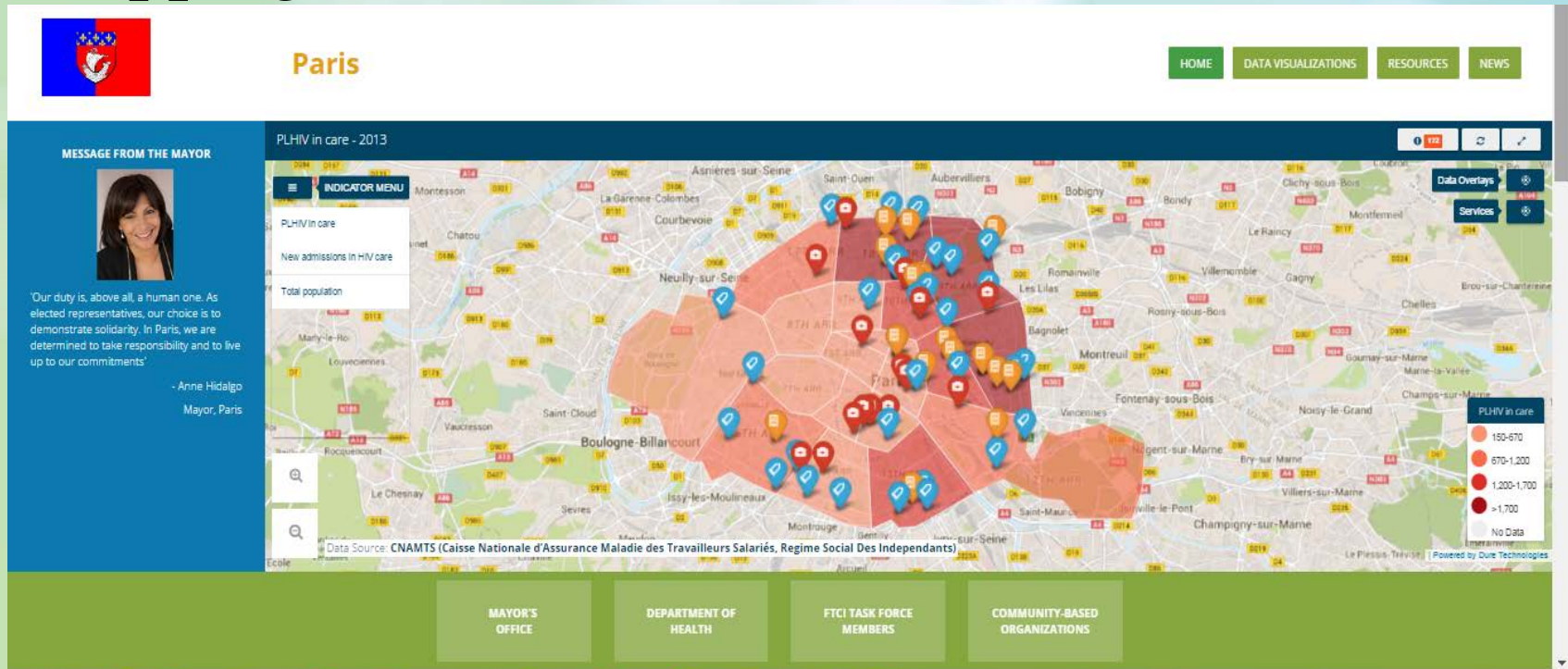
“When spider webs unite,
we can tie up a lion.”

– African proverb



Geographic Targeting

- Example from IAPAC Fast Track Initiative:
Mapping HIV infections and resources in Paris



- United States: AIDS Vu



PREP USE AND DELIVERY RESEARCH



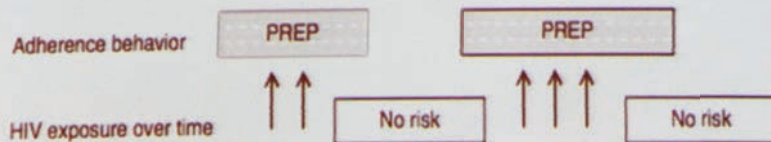
PrEP and “Seasons of Risk”

Research is finding that PrEP use/adherence is responsive to ongoing degree of risk

80 Prevention-Effective Adherence in a Demonstration Project of Pre-Exposure Prophylaxis (PrEP) among HIV Serodiscordant Couples in East Africa

Renee Heffron¹, Jared Baeten¹, Connie Celum¹, Stephen Asiimwe², Elly Katabira³, Elizabeth Bukusi⁴, Nelly Mugo⁴, Lara Kidoguchi¹, Jessica Haberer (presenting)⁵

Prevention-effective adherence paradigm: Success is achieved because PrEP is used during all episodes of HIV exposure. Adherence to PrEP may be periodic and mapped to periods of risk.



THE FENWAY EXPERIENCE 2012-2015

Persistence vs. Discontinuation

- 58% had 0 discontinuation episodes
- 42% discontinued PrEP at least once
 - Main reason for discontinuation was decrease in risk
- 8% delayed PrEP initiation
- 3% never initiated PrEP

Alex Gonzalez May 10
breakfast session on PrEP

118 Why I Quit: A Mixed Methods Examination of the Reasons Gay and Bisexual Men Give for Stopping a PrEP Regimen

Christian Grov, H. Jonathon Rendina, Jeffrey Parsons, Thomas Whitfield (presenting)



Pioneering PrEP Services

MODELS OF PREP INTEGRATION		
	Examples	
Municipal STI Clinics (RISK PREVALENCE)	San Francisco City Clinic PrEP Demo Project	Miami-Dade County Health Department PrEP Demo Project
Primary Care/Self Referral to ID Specialist (CLINICAL EXPERTISE)	Kaiser Permanente (San Francisco)	Froedtert Hospital / Medical College of Wisconsin (Milwaukee)
Primary Care (CARE INFRASTRUCTURE)	Whitman-Walker Health Center (DC)	Fenway Health (Boston)

Alex Gonzalez
May 10 breakfast session on PrEP

PrEP for young MSM in an HIV Clinic Setting

oral

169 PrEP and Sexual Health Services for Young Urban Men who have Sex with Men

Michael D'Arata¹, Jessica Horwitz¹, Rebecca Packard², Kristin Kennedy¹, Xavier Erguera², Robert Grant², Jeff Burack¹, Mi-Suk Kang Dufour², Ifeoma Udoh³, Kimberly Koester², Janet Myers (presenting)², Remi Frazier²

Value of PrEP Specialists

oral

130 The Important Role of the PrEP Specialist in a Multidisciplinary Team Approach to PrEP at a Community Health Center

Sally Holt

Monitoring PrEP Adherence

#ADHERENCE2016



Various modalities show success/promise

Urine Screens

^{oral} **22** Prospective Use of Urine Tenofovir Assay to Monitor Adherence to PrEP

Helen Koenig (presenting)¹, Linden Lalley-Chareczko¹, Ganesh Moorthy², Devon Clark¹, Caroline Sloan³, Pablo Tebas⁴, S. Caitlin Conyngham¹, Karam Mounzer¹, Giffin Daughtridge⁵, Athena Zupp², Jessica Sima²

Self Report

^{oral} **90** Adherence to PrEP among HIV-Negative Women Attempting Conception with HIV-Positive Male Partners in the United States

Emily Stinnett Miller¹, Margaret Sullivan², Mari-Lynn Drainoni³, Jenell Coleman⁴, Helen Koenig⁵, Howard Cabral³, Peter Anderson⁶, Ashley Leech³, Erika Aaron (presenting)⁷

Text messaging

^{oral} **54** Short Message Service (SMS) Surveys Assessing Pre-Exposure Prophylaxis (PrEP) Adherence and Sexual Behavior are Highly Acceptable among HIV-Uninfected Members of Serodiscordant Couples in East Africa

Elly Katabira¹, Jared Baeten², Bridget Burns³, Nelly Mugo⁴, Renee Heffron², Jessica Haberer³, Grace Kimemia⁵, Betty Nankya¹, Kenneth Ngure⁵, Timothy Muwonge (presenting)¹

^{oral} **78** Prevention-Effective Adherence per Short Message Service (SMS) Surveys within a Demonstration Project of Pre-Exposure Prophylaxis (PrEP) among HIV Serodiscordant Couples in East Africa

Jared Baeten¹, Connie Celum¹, Renee Heffron¹, David Bangsberg², Bridget Burns², Nicholas Musinguzi³, Lara Kidoguchi¹, Elly Katabira⁴, Nelly Mugo⁵, Timothy Muwonge⁴, Kenneth Ngure⁶, Jessica Haberer (presenting)²

Multilevel PrEP Barriers

#ADHERENCE2016



Insurance and healthcare access affect PrEP use

101 Healthcare Access and PrEP Continuation in San Francisco and Miami Following the US PrEP Demo Project

Erin Andrew¹, Michael Kolber², Gabriel Cardenas², Oliver Bacon³,
Stephanie Cohen⁴, Daniel Feaster², Albert Liu¹,
Susanne Doblecki-Lewis (presenting)²

Racial disparities in insurance,
provider, & individual factors

161 Enhancing PrEP Access for Black and Latino Men who have Sex with Men

Corina Lelutiu-Weinberger (presenting), Sarit Golub

Provider Heterosexism

200 Adverse Implications of Heterosexism for PrEP Clinical Decision-Making and Considerations Regarding Provider Education

Sarah Calabrese (presenting)¹, Kenneth Mayer², Douglas Krakower³,
Manya Magnus⁴, Kristen Underhill¹, Valerie Earnshaw⁵, Nathan Hansen⁶,
Trace Kershaw¹, Joseph Betancourt⁷, John Dovidio¹

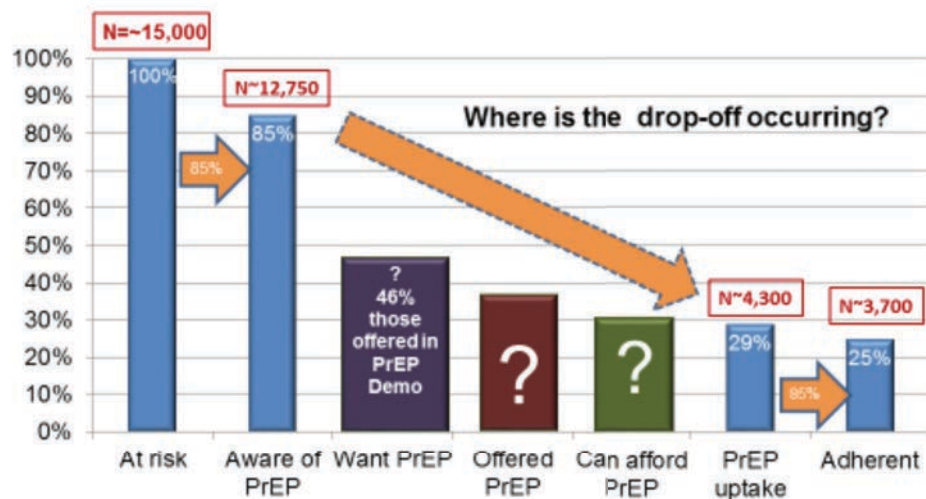


Gaps in the PrEP Cascade

140 HIV Pre-Exposure Prophylaxis Continuum of Care in Patients Presenting to an Urban STD Clinic

Sarah Rowan¹, Judith Shlay¹, Karen Wendel¹, Edward Gardner¹,
Cornelis Rietmeijer², Dean McEwen¹, Grace Marx (presenting)³

Crude, preliminary PrEP cascade for MSM in SF



Liu: San Francisco
PrEP Cascade

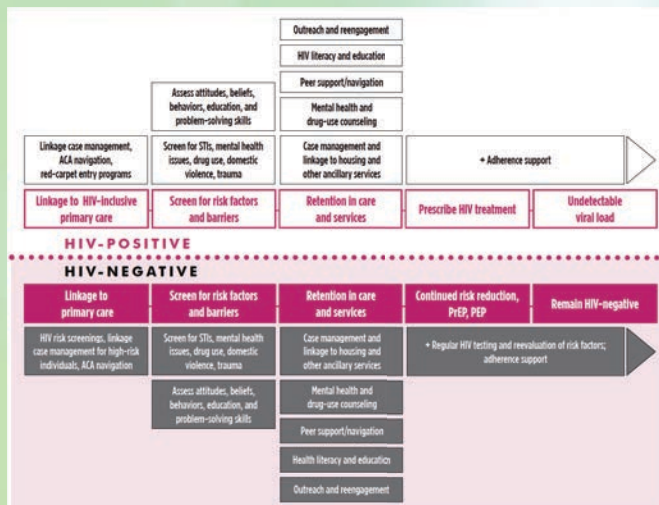
THINKING BIGGER ON PREVENTION

#ADHERENCE2016



Jeremiah Johnson Plenary

- Developing a prevention continuum
- Advancing comprehensive HIV prevention service delivery



Sex Positive Plenary Panel

- Toward sexual well being, away from disease
- Dazon: #PrepFlixAndChill



Catherine Hanssens Plenary:

- HIV transmission criminalization is wrong and counterproductive



RESEARCH ON HIV CARE LINKAGE, RETENTION, & RE-ENGAGEMENT

Depression and Substance Abuse Challenge Engagement/Retention



204 The Effect of Depression on Missed HIV Medical Visits among Patients in the CFAR Network of Integrated Systems (CNICS) Cohort in the United States

Brian Pence (presenting)¹, Angela Bengtson¹, Stephen Cole¹, Heidi Crane², Bradley Gaynes³, Amy Heine¹, Chris Mathews⁴, Richard Moore⁵, Sonia Napravnik¹, Conall O'Cleirigh⁶, Steven Safren⁷, Michael Mugavero⁸

29 Factors Associated with Medical Care Engagement, ART Adherence, and Viral Suppression among Persons Living with HIV (PLHIV) in St. Petersburg, Russia

Yuri Amirkhanian¹, **Jeffrey Kelly (presenting)**¹, Anna Kuznetsova², Wayne DiFranceisco¹, Alexei Yakovlev², Timothy McAuliffe¹, Sergey Tarima¹, Anastasia Meylakhs²

156 Substance Use and the HIV Care Cascade: Findings from an HIV Community-Based Test and Treat Initiative

Anita Raj¹, Jeffrey Samet², John Edmiston³, Sankari Ayyaluru¹, Daniel Triplett¹, Jennifer Yore¹, Lianne Urada¹, Pamela Schwartz³, **Laramie Smith (presenting)**¹, Alexandra Caraballo³

158 Testing and Linkage to Care for People Who Inject Drugs (PWID) in Kenya: Challenges and Successes

Ann Kurth¹, Peter Cherutich², Helgar Musyoki², Charles Cleland³, **John Lizcano (presenting)**¹



Can we proactively identify those at risk for falling out of care?

201 Who Will Show? Predicting Missed Visits in the CFAR Network of Integrated Systems (CNICS) Cohort of Patients in HIV Care in the United States

Brian Pence (presenting)¹, Michael Mugavero², Stephen Boswell³, Katerina Christopoulos⁴, Stephen Cole¹, Heidi Crane⁵, Elvin Geng⁴, Jeanne Keruly⁶, Chris Mathews⁷



Improving Data-to-Care

190 New York City's Efforts to make Data to Care More Efficient: Lessons for other Jurisdictions

Shakara Brown (presenting), Chi-Chi Udeagu

127 Lessons Learned in the Provision of Technical Assistance to Health Departments on Using HIV Surveillance Data to Improve the HIV Care Continuum

Michele Clark¹, Vasavi Thomas², Rhondette Jones², Kathleen Ruth (presenting)²

180 Identifying Out-of-Care Key Populations in Tijuana, Mexico: A Comparison of Data-to-Care and More Traditional Methods

Eileen Pitpitan¹, Rebeca Cazares², Laramie Smith (presenting)¹

¹ University of California San Diego, CA, USA

² Universidad Autónoma de Baja California, Mexicali, Mexico

Room for Improvement in Retention Support Strategies

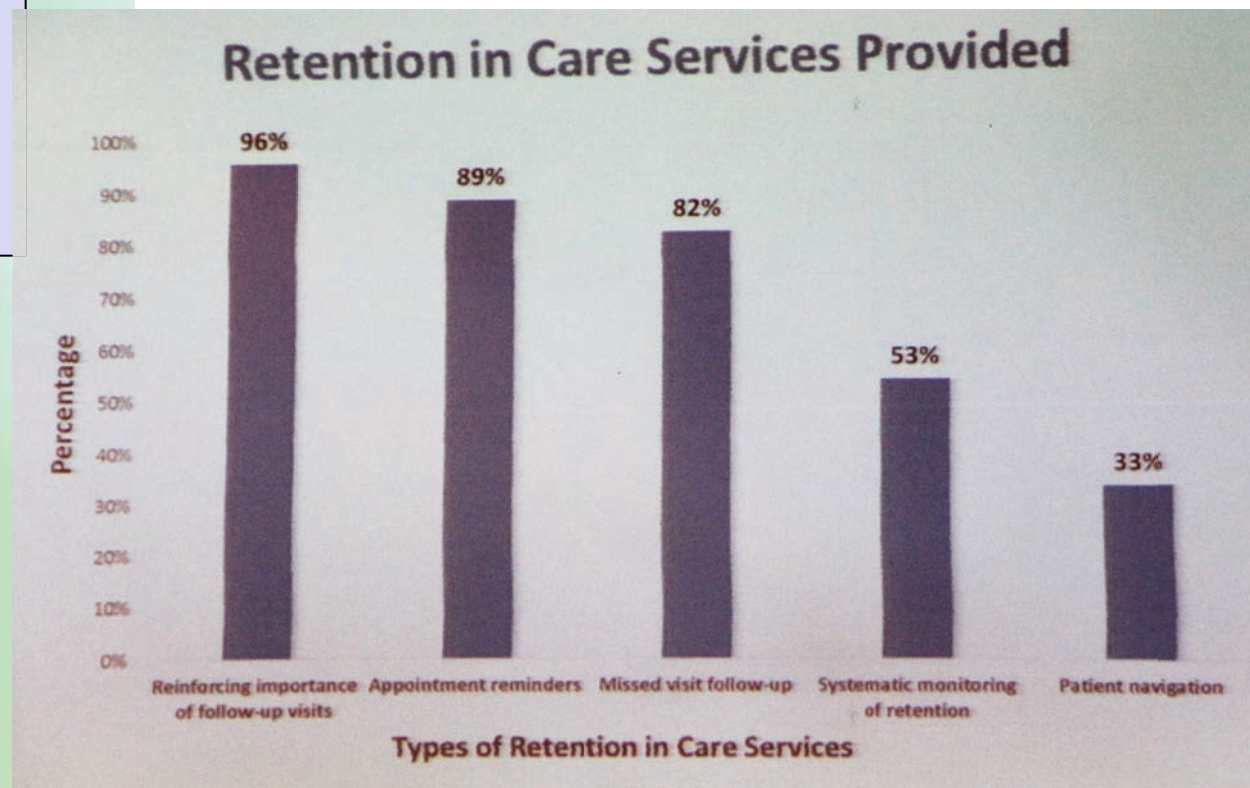
2016



Only 1 in 5 providers work in facilities that provide 5 recommended retention services

15 Retention in Care Services among HIV Primary Care Providers in the United States – National HIV Provider Survey, 2013-2014

Jason Crow (presenting)¹, Garrett Gremel², Linda Beer¹, Heather Bradley¹, Chris Duke², John Weiser¹, Brady West³



Changing Care Delivery Instead of People

#ADHERENCE2016



Public Health – Seattle & King County

Health Department-Based Data to Care

Surveillance-
based outreach
and relinkage
assistance*

*Stepped wedge cluster
randomized trial showed
no effect

Clinic-Based Data to Care

HIV Clinic
Surveillance
-Informed
Patient
Tracing*

*Controlled analysis
showed small effect

ER & Hospital
Automated data
match with real-
time text
message to
public health
relinkage team

*MAX Clinic"
for persons who do not engage in
traditional HIV care despite

Sources: Dombrowski et al, IAS 2015;

The MAX Clinic

Eligibility

- Off ART & poorly engaged in care
- Failure to engage in care and treatment after outreach

Identified through surveillance or
referred from provider, case manager or
peers

MAX Clinic

(located in county STD Clinic)

- Walk-in care 5 afternoons per week
- Case coordinator – intensive support & outreach
- Cell phone distribution & text message communication
- Snacks and meal vouchers
- Unrestricted bus passes
- Financial incentives for visit adherence (\$25) and

125 The MAX Clinic: A Structural Healthcare Systems Intervention Designed to Engage the Hardest-to-Reach Persons Living with HIV/AIDS

Dawn Spellman¹, Matthew Golden¹, Robert Harrington²,
Shireesha Dhanireddy², Rachel Patrick¹, Allison Moore¹,
Meena Ramchandani², Julia Dombrowski (presenting)²



Efforts to improve linkage and retention

77 Seek, Test, Treat and Retain (STTR) for People Who Inject Drugs (PWID) in Kenya: An Update of a Stepped Wedge Study

Charles Cleland¹, Helgar Musyoki², Ann Kurth³, Peter Cherutich², John Lizcano (presenting)³

Respondent Driven Sampling

99 A Randomized Controlled Trial of an Intervention to Maintain Suppression of HIV Viremia following Prison Release through Linkage to Community Care: The imPACT Trial

Patrick Flynn¹, Cathie Fogel², Stephen Cole², Sonia Napravnik², Jennifer Groves², Becky White², Michelle Gould¹, Jessica Carda-Auten², Kevin Knight¹, Carol Golin², David Wohl (presenting)²

Multicomponent

92 Costs and Consequences of HIV Linkage-to-Care Strategies Implemented in Urban and Rural South African Settings

Chris Hoffmann¹, David Dowdy², Salome Charalambous³

Point of care CD4

86 The Impact of Patient Navigation Services for HIV-Positive Individuals on Retention in HIV Care and Viral Suppression in Virginia

Lauren Yerkes (presenting), Anne Rhodes, Kate Gilmore

Patient Navigation



ART ADHERENCE RESEARCH



Long acting ART regimens in development



VERY LONG ACTING NRTI

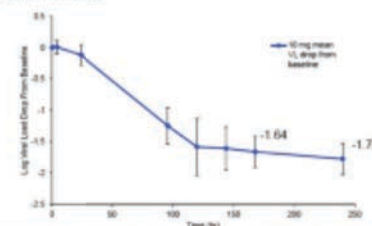
- EFdA- nucleoside RT inhibitor
- Very long $t_{1/2}$
- Effective viral reduction dosed orally once—weekly
- Parenteral PK supportive of q6 month dosing

Grobler, CROI2016

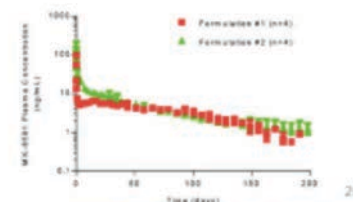
IA PAC
INTERNATIONAL ASSOCIATION
OF PROVIDERS OF AIDS CARE

MK-8591 is Effective in HIV patients when Dosed Once-Weekly: Results from ongoing Ph1b study

Frederick, et al., Poster 437LB



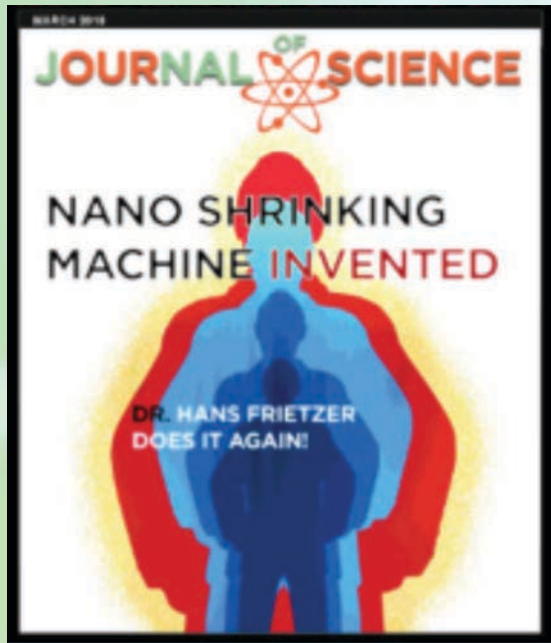
MK-8591 Parenteral Formulations Release Effective Drug Levels for >180 days



Ben Young Plenary, May 10



Gaming approach for improved ART adherence in youth



32 An iPhone App/Game Improves ART Adherence and Increases Condom Use

Estefany Bologna¹, Trisha Arnold¹, Virginia Curtis², Lacey Craker²,
Laura Beauchamps¹, Leandro Mena³, Larry Brown²,
Laura Whiteley (presenting)²

Includes Wisepill-generated bonuses & level-ups



Individual counseling and group clinical visits to promote adherence among PLWH of color

18 A Randomized Controlled Trial of Rise, a Culturally Tailored Behavioral Adherence Intervention for African-Americans Living with HIV

Glenn Wagner¹, Laura Bogart (presenting)¹, Matt Mutchler², Bryce McDavitt³, David Klein¹, William Cunningham⁴, Kathy Goggin⁵, Sean Lawrence², Nikki Rachal⁶, Kelsey Nogg⁷

100 “We’re Not Just HIV Infection”: Promoting Antiretroviral Adherence among HIV-Positive Women through a Group Clinical Visit Intervention

Chinazo Cunningham, Robert Grossberg, Alain Litwin, Julia Arnsten, Rosy Chhabra, Christine Lee, Lorlette Haughton, Oni Blackstock (presenting)

Supporting Autonomy and Choice

#ADHERENCE2016



16 Increasing Antiretroviral Therapy Initiation among those who have Delayed, Declined, or Discontinued Medication: Applying Critical Race Theory to Understand Barriers and Inform Intervention Strategies

Marya Gwadz (presenting)¹, Elizabeth Silverman², Robert Freeman, Alexandra Kutnick³, Sylvie Honig¹, Amanda Ritchie¹, Rebecca de Guzman, Noelle Leonard¹, Charles Cleland⁴

25 PLWHA who Delay, Decline, or Discontinue ART: A Mixed Methods Study to Understand the Mechanisms of Action of a New Efficacious Intervention to Increase ART Initiation

Nadim Salomon¹, Marya Gwadz (presenting)², Charles Cleland², Noelle Leonard², Elizabeth Silverman³, Robert Freeman, Alexandra Kutnick², Amanda Ritchie², Rebecca de Guzman, Sylvie Honig²

Addressing ART initiation through

- Support for autonomy/choice
- MI to foster personal decision making
- Acknowledging racism and historical
- Culturally appropriate elements

Structural Constraints

#ADHERENCE2016



Employment

oral

177 Predictors of Retention in HIV Care and HIV Viral Load Suppression One Year After being Hospitalized while out of HIV Care

Melinda Stanley¹, Michael Kallen², K. Rivet Amico³, Jessica Davila¹, Christine Hartman⁴, **Thomas Giordano (presenting)**¹

Transportation

oral

136 Cars, Chaos, and Grief: Women of Color Report Reasons for Missed HIV Care Visits

Lynne Messer¹, Katya Roytburd², Tyffany Evans Coleman², Miriam Berger³, Heather Parnell³, Kristen Sullivan³, **Anna Finestone LeViere (presenting)**²

Food Insecurity

oral

155 Socio-Structural and Psychosocial Factors Associated with Antiretroviral Therapy Adherence by Gender in British Columbia, Canada

Robert Hogg¹, Cari Miller², Angela Kaida², **Cathy Puskas (presenting)**²

Survival Needs

oral

173 Survival Needs and ART Adherence among Young HIV-Infected MSM of Color in Oakland

Kristin Kennedy¹, Jeff Burack¹, Ifeoma Udoh², Kimberly Koester, Remi Frazier, Mi-Suk Kang Dufour, **Janet Myers (presenting)**³



Addressing Social and Structural Challenges

160 Improvements in HIV-Related Outcomes among Homeless HIV Patients Using an Intensive Trauma-Informed-Care-Based Intervention

Yasmeen Quadri¹, Nancy Miertschin², Siavash Pasalar², Charlene Flash¹, Jessica Davila (presenting)¹, Thomas Giordano¹

Trauma Informed Care

24 Stable Housing Placement and Viral Suppression after Rapid Rehousing for Homeless Persons with HIV: Data for Action from the Enhanced Housing Placement Assistance (EHPA) Randomized Controlled Trial in New York City

Ellen Wiewel (presenting)¹, Vivian Towe², John Rojas¹, Joanne Hsu¹, Yaoyu Zhong¹, Laura Hollod¹, Jesse Thomas³, Rachel Johnson⁴

Housing Assistance

146 Improved Adherence to Care and Treatment for People Living with HIV and Participating in a Comprehensive Nutrition Food Support Program in the San Francisco Bay Area: A Longitudinal Qualitative Study

Kartika Palar¹, Simon Pitchford², Kimberly Madsen², Edward Frongillo³, Fredrick Hecht¹, Nikhil Ranadive⁴, Loulou Chayama¹, Tessa Napoles¹, Sheri Weiser¹, Lee Lemus Hufstedler (presenting)¹

Food Support



Going forward: Critical to Address Stigma

Day-level associations between
internal stigma & ART adherence

89 The Critical Influence of Daily Experiences of Internalized HIV Stigma on Medication Non-Adherence for HIV-Positive Gay and Bisexual Men

H. Jonathon Rendina (presenting)¹, Jeffrey Parsons¹, Steven Safren², Sitaji Gurung¹

HIV stigma in healthcare settings
predicts viral suppression

207 HIV-Related Stigma in Healthcare Settings and Health Outcomes among People Living with HIV

Bulent Turan (presenting), Robin Lanzi, Janet Turan, Whitney Smith



Getting to Zero Stigma

- Sigurdson Plenary:
Mapping the people living with HIV Stigma Index

#ADHERENCE2016

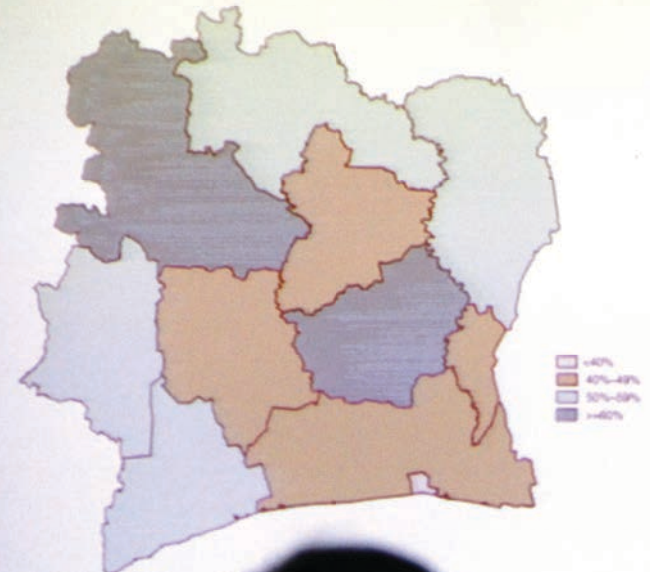


People Living with HIV Stigma Index

- Implemented in over 80 countries, with over 75,000 PLHIV interviewed to date.
- Led by GNP+ and ICW – community-led data to drive advocacy, influence programming and investments, improve quality of services.
- Process is as important as the data – empowers and builds capacity of individuals and implementing organizations.



Percentage of people (aged 15–49) who report discriminatory attitudes towards people living with HIV, Côte d'Ivoire

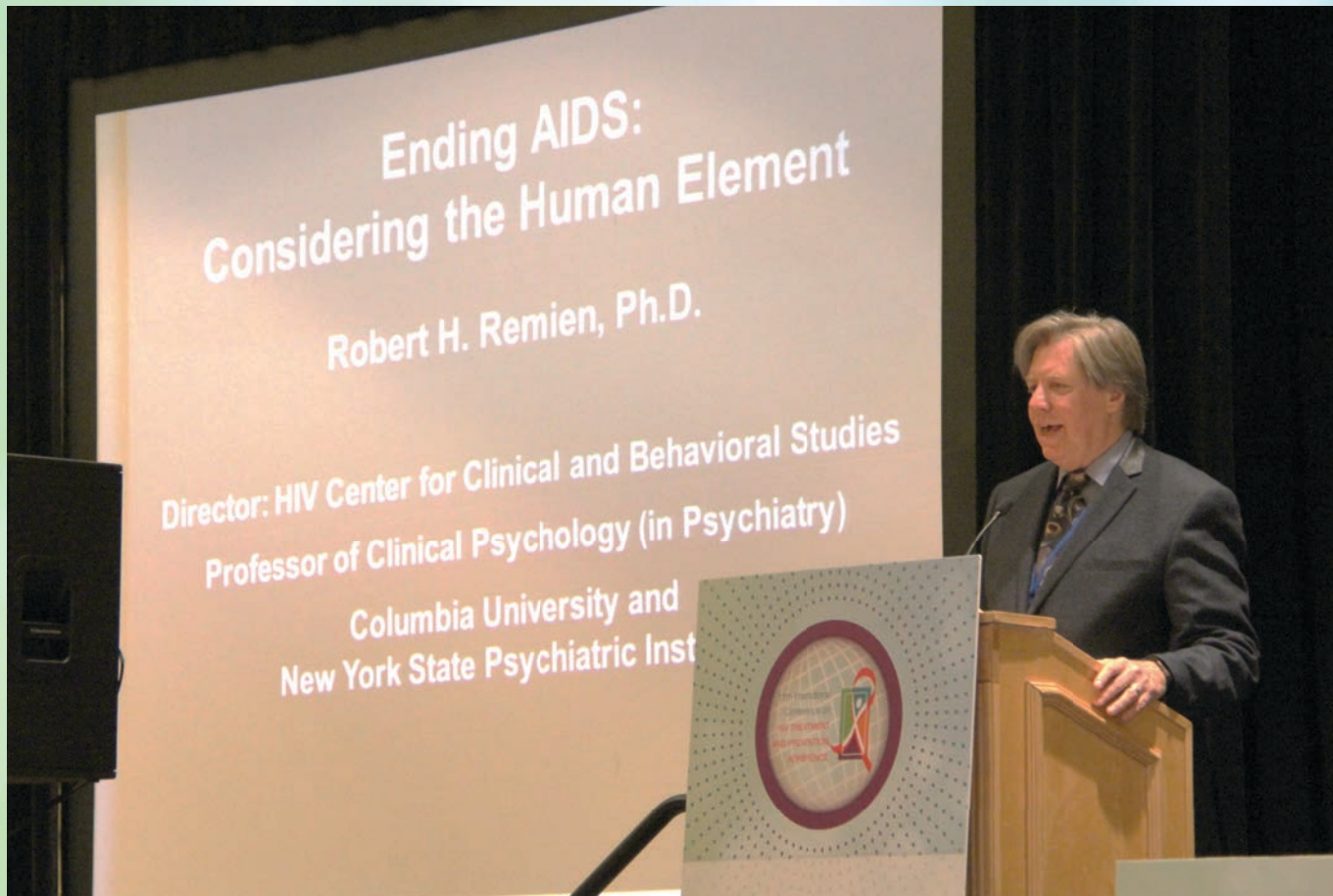




The Power of the Human Element



Robert Remien: Reiter/Kaplan Memorial Lecture





The power of
strong
relationships
between patient
and provider



The power of one

(Atypical) Case Study

- Gay male in early 20's → NYC in 1977 to attend Graduate School
- 1977: volunteered in NYC Blood Center Hepatitis B efficacy vaccine trial
- 1984: discovered HIV+ antibody status - dating back to a seroconversion in 1980 - by testing stored serum
- 1990's: labeled a "long-term non-progressor;" Dr. David Ho; Aaron Diamond; *NEJM* seminal paper (1 of 10)
- 2000: after 20 years - rising VL; decline in CD4
– ART recommended; patient resisted; eventually
- Surviving & Thriving (36 years with HIV)

*Cao Y, Qin L, Zhang L, Safrit J, Ho DD. Virologic and immunologic characteristics of long-term non-progressors. *N Engl J Med* 2000; 342:1021-30.

Adherence 2016
MAY 9-11, 2016
FORT LAUDERDALE



Thank you!

**Michael Stirratt Ph.D.
NIMH Division of AIDS Research**

stirrattm@mail.nih.gov